



Pathfield Road, London, SW16 5NZ

Cow & Co
LONDON



A bright and spacious two double bedroom first floor period conversion offering excellent living accommodation. The property offers a sleek fitted kitchen along with a smart well appointed bathroom.

This lovely home would suit any commuter requiring access into The City due its close proximity to Streatham Common Station, which direct access to central London Via London Bridge and London Victoria. Pathfield Road is positioned close to a wide array of popular local amenities on Streatham High Road, it is also just around the corner from the wide, open and leafy spaces of Streatham Common.

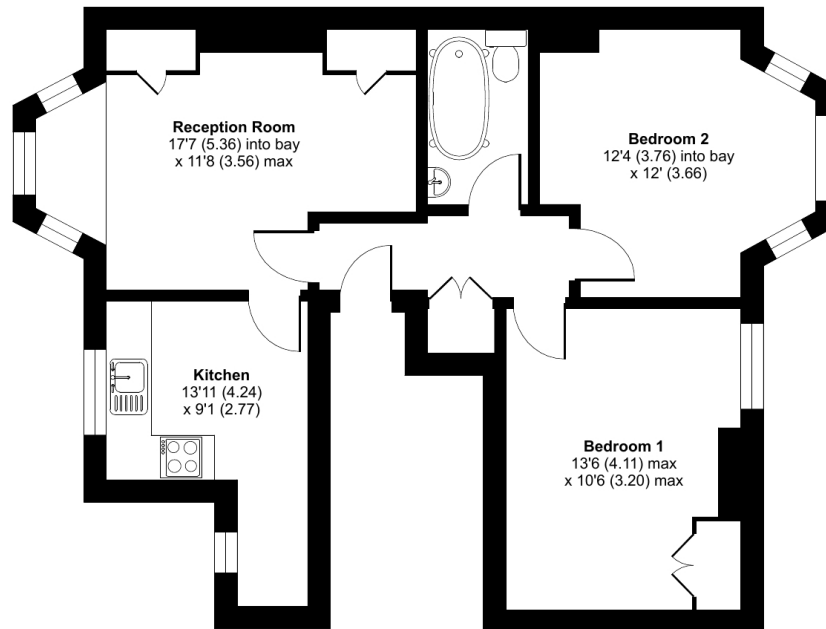


- Two double bedroom period conversion
- Private garden
- Bright and spacious
- New carpets
- Modern fixtures and fittings
- No onward chain
- Close to a wealth of amenities and transport links
- Popular treelined road

Pathfield Road, London, SW16

Approximate Area = 627 sq ft / 58.2 sq m

For identification only - Not to scale



FIRST FLOOR



Floor plan produced in accordance with RICS Property Measurement Standards incorporating International Property Measurement Standards (IPMS2 Residential). © nchecon 2023. Produced for Cow & Co Properties Ltd. REF: 1061656

Tel: 0208 065 0010
Email: thehub@cowandco-london.com
Web: cowandco-london.com

Agents note: All measurements are approximate and whilst every attempt has been made to ensure accuracy they are for general guidance only and must not be relied on. The fixture and fittings referred to have not been tested and therefore no guarantee can be given that they are in working order. Internal photographs are reproduced for general information and it must not be inferred that any item shown is included with the property.

Cow & Co
LONDON