

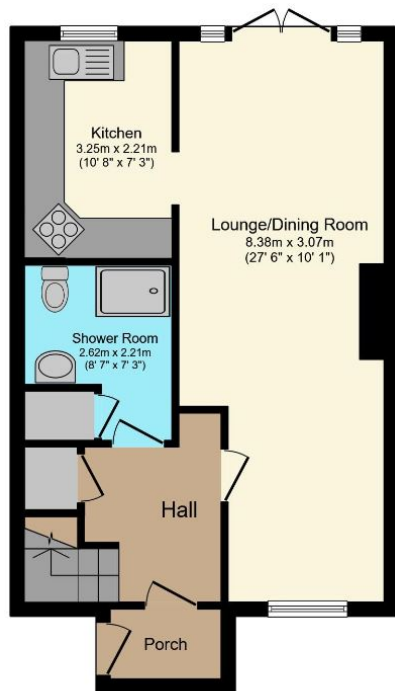
New



*Maythorn Avenue, Croft. WA3 7HP.
Offers in Excess of £210,000*

Offered For Sale no chain | Freehold title | Two bedrooms | Downstairs Wet room | Detached garage and driveway |





Ground Floor



First Floor

Total floor area 73.3 sq.m. (789 sq.ft.) approx

This semi-detached house on Maythorn Avenue in Croft offers comfortable and modern living in a peaceful suburban location. The property features a porch with welcoming entrance hall, leading to a spacious and bright living room, with large windows allowing natural light to flood in. There is an archway leading to the kitchen which has been designed with plenty of storage space. The wet room can be found on the ground floor with hand basin and wc.

Upstairs, there are two bedrooms, both with plenty of natural light and fitted wardrobes for storage to the master bedroom.

Externally, the property boasts a lovely private garden, perfect for outdoor entertaining or enjoying the sunshine. There is also a driveway providing off-road parking and a garage for additional storage space.



Contact your local office to arrange a viewing:

- Padgate:** 01925 479334
- Great Sankey:** 01925 454300
- Winwick:** 01925 232146
- Stockton Heath:** 01925 453400
- St.Helens:** 01744 754120
- Wigan:** 01942 498862
- Culcheth:** 01925 764744
- Ashton-In-Makerfield:** 01942 364446
- Newton-Le-Willows:** 01925 907770
- Commercial Office:** 01925 907709
- Lettings Head Office:** 01925 873533
- Financial Services:** 01925 221234

Viewing Arrangements

Viewing is strictly by appointment only through Ashtons Estate Agency.

Disclaimer Property Details

These particulars, whilst being believed to be accurate are set out as a general outline only for guidance and do not constitute any part of an offer or contract. Intending purchasers should not rely on them as statements of representation of fact, but must satisfy themselves by inspection or otherwise as to their accuracy. We have not carried out a detailed survey nor tested the services, appliances and specific furnishings. The measurements given are approximate. No person in this firm's employment has the authority to make or give any representation or warranty in respect of the property.

All details, photographs and floorplans are the copyright of Ashtons Estate Agency.



How much you can borrow?
Speak to a mortgage expert in your local office.

Ashtons Financial Services

Ashtons.net rightmove

PrimeLocation.com Zoopla.co.uk

