



**HOUSEFOX.CO.UK**

Full estate agency service at online prices

e: [sales@housefox.co.uk](mailto:sales@housefox.co.uk) | w: [www.housefox.co.uk](http://www.housefox.co.uk)



**Apartment 16 Birnbeck Lodge, Birnbeck Road, Weston super Mare, BS23 2BX**  
**£285,000**

01934 314242   01275 404601   01278 557700  
Viewings strictly by appointment



# HOUSEFOX.CO.UK

## Description

ITS ALL ABOUT THE LOCATION, AND WHAT A LOCATION THIS APARTMENT HAS.....Set opposite Marine Lake this stunning apartment is set on the first floor of this Victorian building which was once owned by the Rolls Royce family.

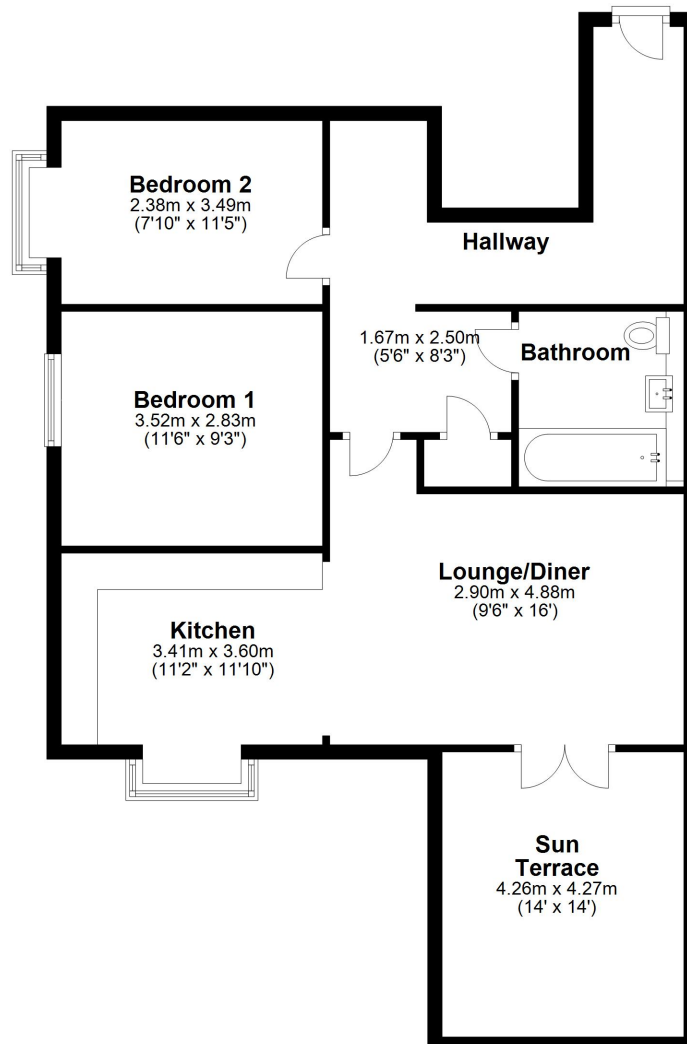
The property is currently under redevelopment and the show home is expected to open Mid to late April. The development consists of two blocks, and this apartment is set in the part of the development that has 16 units

Apartment 16 is set on the first floor and comprises hallway, lounge/diner open plan to the modern kitchen which has integrated appliances and sea views, 2 double bedrooms, luxury Villeroy & Boch bathroom suite, modern electric heating, double glazing, parking space and a fantastic sun terrace giving views over Marine Lake and towards the sea.

So if you're looking for a luxury apartment, want to spend time relaxing on the sun terrace taking in the views, want to be able to walk to an array of restaurants, bars, cafes and the beach, then House Fox estate agents recommend you give them a call to ask all about the development.

The management fee on this apartment is £115 a month

## Floor Plan



A survey has not been carried out, nor have the services, appliances or fittings been tested. All measurements are approximate and should not be relied upon for furnishing purposes.