

# The Ridgeway

Warminster, BA12 9NQ

COOPER  
AND  
TANNER



£198,000 Freehold

🚗 2 🛋️ 1 🚿 1 EPC E

## Description

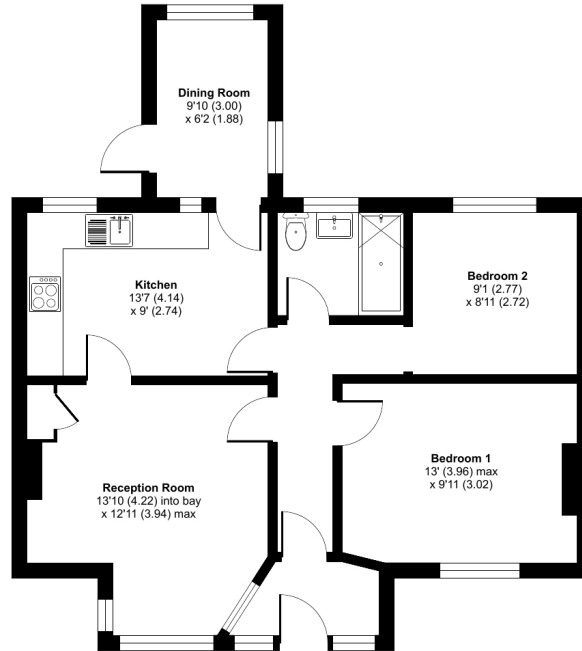
An opportunity to purchase this spacious two bedroom terraced bungalow that is located in a popular location off East End Avenue, that is close to the town and amenities. The property has a generous front and rear garden along with gas central heating and double glazing. The accommodation in brief comprises entrance hall, lounge, kitchen, two bedrooms, dining room, bathroom. Outside are very generous and established front and rear gardens. No Chain



# The Ridgeway, Warminster, BA12

Approximate Area = 713 sq ft / 66.2 sq m

For identification only - Not to scale



GROUND FLOOR



Floor plan produced in accordance with RICS Property Measurement Standards incorporating International Property Measurement Standards (IPMS2 Residential). © nichecom 2023. Produced for Cooper and Tanner. REF: 1023596



## Features

- No Chain
- Terrace Bungalow
- Two bedrooms
- Large gardens
- Gas Central Heating
- On street parking to front
- Close to town centre
- Close to local Park and Town
- Double glazed
- Viewing advised

## Local Information

- Council Tax Band B
- Tenure Freehold
- EPC Rating E

### WARMINSTER OFFICE

Telephone 01985 215579

48-50, Market Place, Warminster, Wiltshire BA12 9AN

[warminster@cooperandtanner.co.uk](mailto:warminster@cooperandtanner.co.uk)

**COOPER  
AND  
TANNER**

Important Notice: These particulars are set out as a general outline only for the guidance of intended purchasers and do not constitute, nor constitute part of, an offer or contract. All descriptions, dimensions, reference to condition and necessary permissions for use and occupation, warranties and other details are given without responsibility and any intending purchasers should not rely on the m as statements or representations of fact but must satisfy themselves by inspection or otherwise as to the correctness of each of them.

