



GREENFORD ROAD, GREENFORD

£1,400 pcm

**** NEWLY REFURBISHED **** A bright and spacious one bedroom first floor flat that has been modernised to a very high standard throughout. The property is conveniently situated for the shops and amenities on Greenford Broadway and various bus links to Ealing Broadway and Greenford Station also easy access to A40 into central London. The property briefly comprises communal entrance lobby, stairs to first floor landing, living room with fitted storage, modern fitted kitchen, double bedroom with fitted storage, contemporary bathroom suite and off street parking for one car. Further benefits include double glazing, gas central heating and available immediately.

- ONE DOUBLE BEDROOM
- FIRST FLOOR FLAT
- NEWLY REFURBISHED THROUGHOUT TO A HIGH STANDARD
- MODERN FITTED KITCHEN
- CONTEMPORARY BATHROOM SUITE
- OFF STREET PARKING FOR ONE CAR
- CONVENIENTLY LOCATED FOR SHOPS AND TRANSPORT LINKS
- DOUBLE GLAZING AND GAS CENTRAL HEATING
- AVAILABLE IMMEDIATELY

Ground Floor

Communal Entrance Lobby

First Floor

Landing

Storage Cupboard

4' 8" x 2' 10" (1.42m x 0.86m)

Living Room

16' 8" max x 8' 9" (5.08m x 2.67m)

Kitchen

7' 8" x 7' 7" (2.34m x 2.31m)

Bedroom

14' 2" max x 8' 9" (4.32m x 2.67m)

Bathroom

7' 9" x 5' 9" (2.36m x 1.75m)

Outside

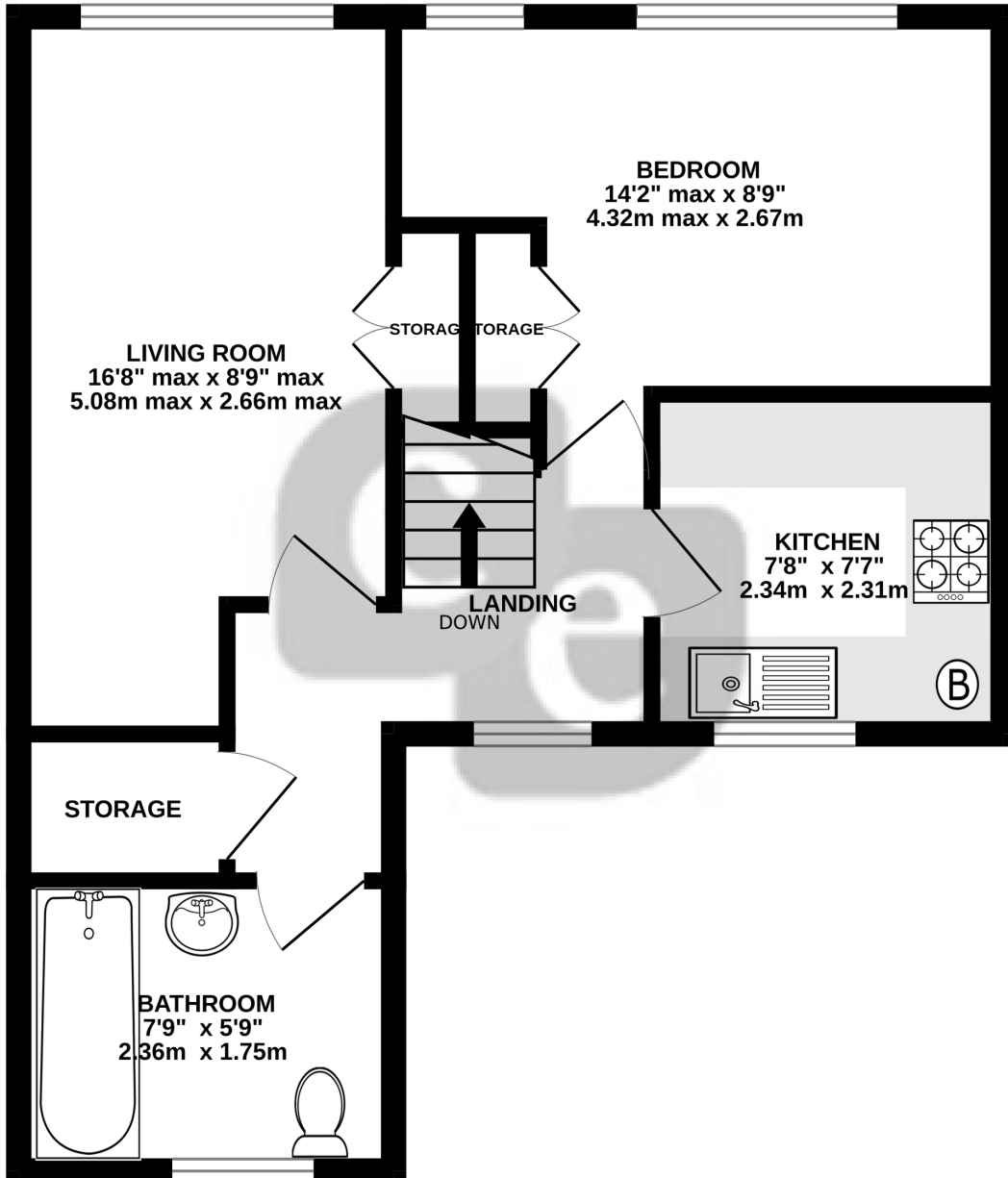
Parking

Off street parking for one car.



DISCLAIMER: These particulars, whilst believed to be accurate are set out as a general outline only for guidance and do not constitute any part of an offer or contract. Intending purchasers should not rely on them as statements or representation of fact, but must satisfy themselves by inspection or otherwise as to their accuracy. We have not carried out a detailed survey nor tested the services, appliances and specific fittings. Room sizes should not be relied upon for carpets and furnishings. The measurements given are approximate. No person in this firms employment has the authority to make or give any representation or warranty in respect of the property.

FIRST FLOOR
469 sq.ft. (43.6 sq.m.) approx.



TOTAL FLOOR AREA : 469 sq.ft. (43.6 sq.m.) approx.

Whilst every attempt has been made to ensure the accuracy of the floorplan contained here, measurements of doors, windows, rooms and any other items are approximate and no responsibility is taken for any error, omission or mis-statement. This plan is for illustrative purposes only and should be used as such by any prospective purchaser. The services, systems and appliances shown have not been tested and no guarantee as to their operability or efficiency can be given.
Made with Metropix ©2024