

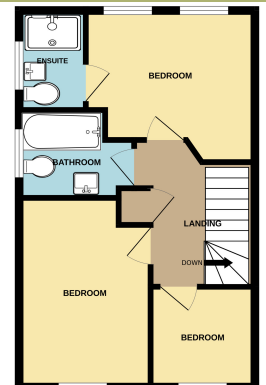
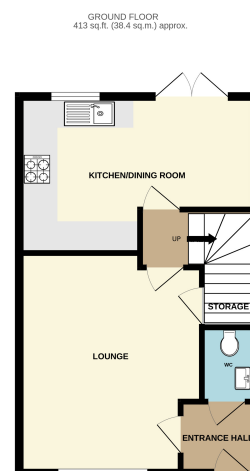
## SKYPPE ROAD

£270,000



### Key Features

- ✓ Set within the popular Hawk Rise development.
- ✓ Well Presented End-Terrace House.
- ✓ Three Bedrooms.
- ✓ Two Bathrooms.
- ✓ Enclosed Garden.
- ✓ Off Road Parking.



TOTAL FLOOR AREA: 627 sq. ft. (57.8 sq.m.) approx.  
Made with Merge ©2020



Energy Efficiency Rating		Current	Potential
Very energy efficient - lower running costs			
(92+)	<b>A</b>		96
(81-91)	<b>B</b>	84	
(69-80)	<b>C</b>		
(55-68)	<b>D</b>		
(39-54)	<b>E</b>		
(21-38)	<b>F</b>		
(1-20)	<b>G</b>		
Not energy efficient - higher running costs			
England, Scotland & Wales			EU Directive 2002/91/EC