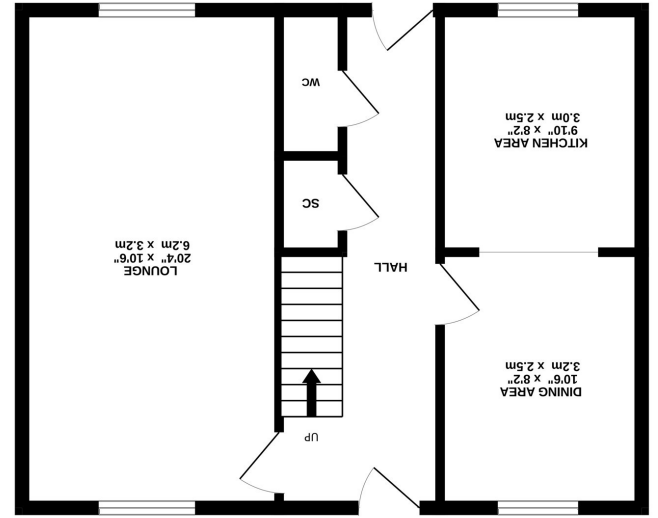
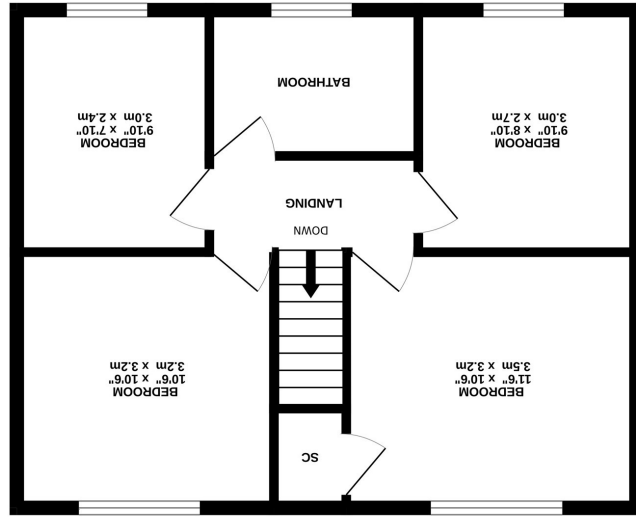


Whilst every attempt has been made to ensure the accuracy of the floorplan contained here, measurements of doors, windows, rooms and any other items are approximate and no responsibility is taken for any error, omission or mis-statement. This plan is for illustrative purposes only and should be used as such by any prospective purchaser. The services, systems and appliances shown have not been tested and no guarantee as to their operability or efficiency can be given.  
Made with Metropix ©2024

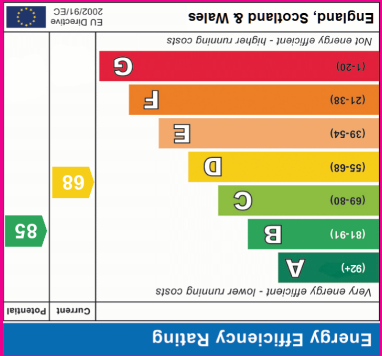
TOTAL FLOOR AREA : 1032 sq.ft. (95.9 sq.m.) approx.



GROUND FLOOR  
516 sq.ft. (47.9 sq.m.) approx.



1ST FLOOR  
516 sq.ft. (47.9 sq.m.) approx.



**Description**

A four bedroom end of terrace home situated in the sought after St Nicholas area of Stevenage. Very well presented throughout, spacious and practical for an expanding family. Benefits include downstairs cloakroom an sociable kitchen/diner and four well proportioned bedrooms.



**The property**

A spacious and light entrance hall, downstairs cloakroom and storage cupboard. There is a kitchen/diner which is open plan and ideal for entertaining guests or day to day family life. In addition to this there is a full length lounge. The kitchen has plenty of cupboard space and part built in appliances.

Upstairs are four well proportioned bedrooms and the main family bathroom. This comprises of enclosed bath with shower, wash basin and W/C.

Outside to the front is open green land screened by mature trees. This provides a safe environment for children to play.

The rear garden is also well maintained and has gated access to the parking area.

