



Northwood Lane,  
Clayton, Newcastle-  
Under-Lyme

 **OneAgency**

01782 970222

[hello@oneagencygroup.co.uk](mailto:hello@oneagencygroup.co.uk)





# £369,950

Stunning detached house with double garage, situated in a sought after location with excellent access to the M6. The property has been extensively improved by the present vendors and offers high quality contemporary accommodation, ready to move straight into. There is a fantastic open plan Kitchen/Family/Dining area with bi-fold doors overlooking an attractive garden with open views.





## GROUND FLOOR

### ENTRANCE HALLWAY

Tiled floor, radiator, stairs to first floor, under stairs storage area.

### STUDY

2.76m x 4.22m (9' 1" x 13' 10") Radiator, double glazed window to front.

### LOUNGE

3.82m x 5.04m (12' 6" x 16' 6") Radiator, log burner, double glazed window to front, wooden floor.

### OPEN PLAN KITCHEN/FAMILY ROOM/DINING AREA

8.83m x 3.20m (29' 0" x 10' 6") Bi-fold doors over looking rear garden, double glazed window to rear, stainless steel sink and drainer unit with mixer tap. Fitted with a range of wall, base and drawer storage units, tiled floor, fitted oven, fitted hob with extractor fan above, breakfast bar area, integral dishwasher, integral fridge and freezer.

### UTILITY

Wall mounted Ideal boiler, plumbing for washing machine, space for dryer.

### CLOAKS

WC, hand wash basin, vertical radiator, double glazed frosted window to rear, tiled floor.

### FIRST FLOOR

#### LANDING

Access to loft.

## MASTER BEDROOM

3.88m x 4.00m (12' 9" x 13' 1") Double glazed window to front, radiator, walk in wardrobes with fitted storage and double glazed window to front.

### EN SUITE SHOWER ROOM

Shower cubicle with mains shower, hand wash basin, heated towel rail, tiled floor, double glazed frosted window to side.

### BEDROOM TWO

3.91m x 4.06m (12' 10" x 13' 4") Double glazed window to front, radiator, fitted wardrobes.

### BEDROOM THREE

2.88m x 2.77m (9' 5" x 9' 1") Double glazed window to rear, radiator, fitted wardrobes.

### BEDROOM FOUR

2.87m x 2.77m (9' 5" x 9' 1") Double glazed window to rear, radiator.

### FAMILY BATHROOM

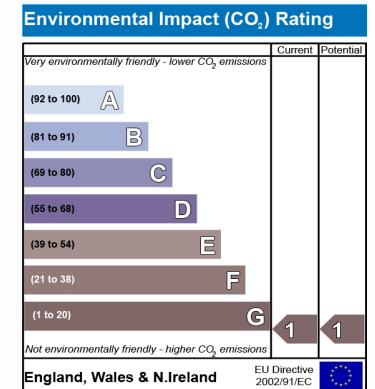
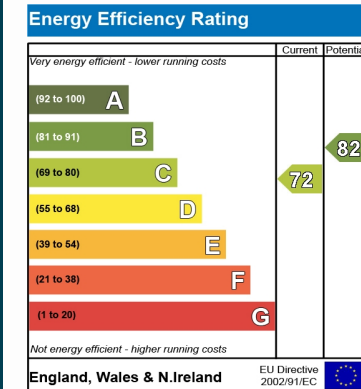
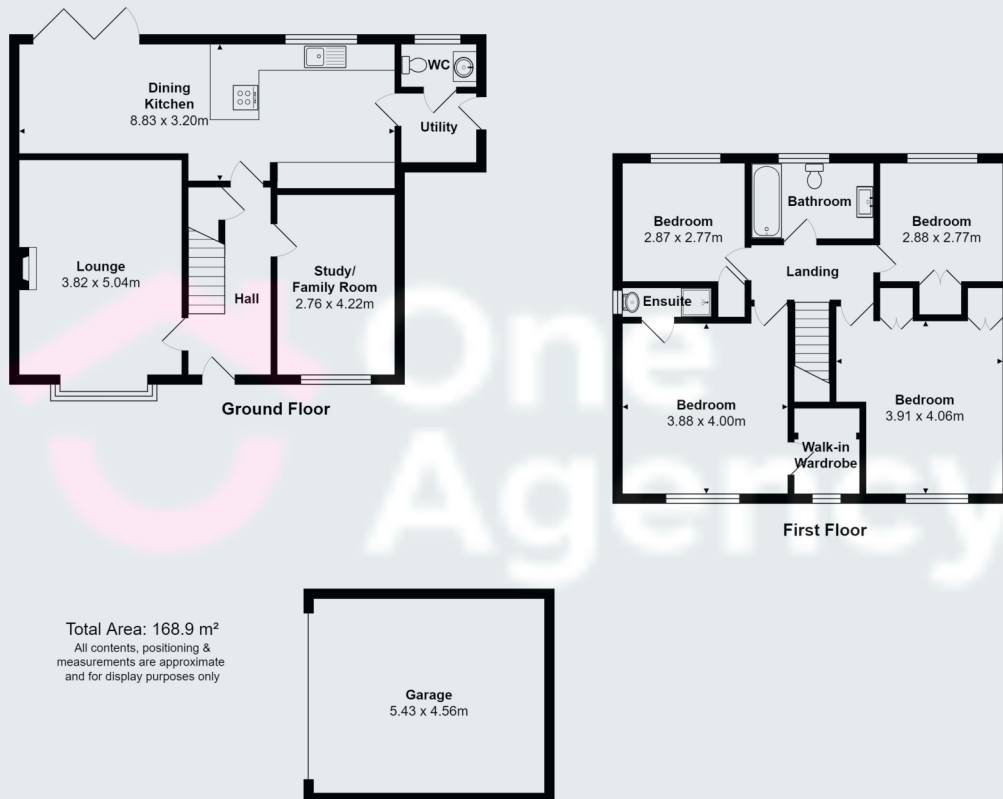
Bathroom suite comprising of panelled bath with overhead shower, WC, hand wash basin, tiled floor, heated towel rail, double glazed frosted window to rear.

### OUTSIDE

Detached brick built double garage with electric doors. Attractive rear garden with far reaching views.

### GARAGE

5.43m x 4.56m (17' 10" x 15' 0")



OneAgency, 9 & 10 Ridge House Drive, Festival Park, Stoke-on-Trent, ST1 5SJ

01782 970222

hello@oneagencygroup.co.uk

Every attempt has been made to ensure accuracy, however, all measurements are approximate and for illustrative purposes only. **Not to scale.**

In accordance with The Consumer Protection from Unfair Trading Regulations 2008 the following particulars have been prepared in good faith and they are not intended to constitute part of an offer or contract. We have not carried out a structural survey and the services, appliances and specific fittings have not been tested. All photographs, measurements, floor plans and distances referred to are given as a guide only and should not be relied upon for the purchase of carpets or any other fixtures and fittings. Lease details, service charges and ground rent (where applicable) are given as a guide only and should be checked and confirmed by your Solicitor prior to exchange of contracts.