



5 Roe Deer Meadow, Langford, Biggleswade, Bedfordshire, SG18 9GJ

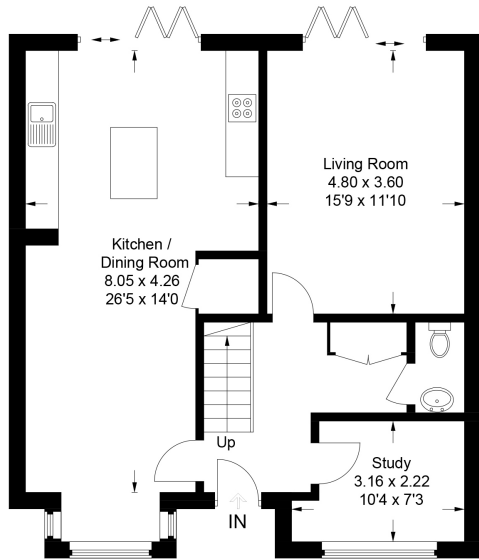
£650,000

SEEING IS BELIEVING. Beautifully presented and upgraded to an exceptional standard is this four bedroom detached family home. Built only a year ago by Bloor homes 'The Harwood' design offers over 1700 sq ft of bright and spacious accommodation and enjoys a fully fitted kitchen/diner/family room plus separate lounge both with bi-fold doors overlooking the professionally designed landscape garden. Upstairs are four double bedrooms (Bed 1 & 2 with built in wardrobes), an en-suite and a newly re-fitted bathroom with slate tiling and a free standing bath. The rear garden has an extensive Indian slate patio & BBQ area as well as a rear seating area with the 60 perimeter 'thuja occidentalis' trees providing current and future privacy. VIEWING HIGHLY ADVISED.

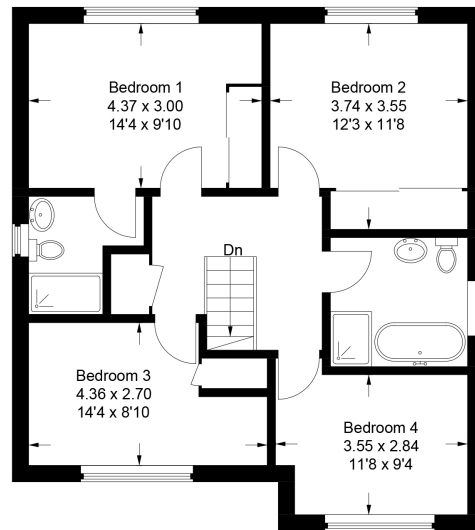


- BEAUTIFULLY PRESENTED FOUR DOUBLE BEDROOM DETACHED FAMILY HOME
- UPGRADED THROUGHOUT TO AN EXCEPTIONAL STANDARD
- BUILT ONLY A YEAR AGO BY BLOOR HOMES 'THE HARWOOD' DESIGN
- 1700 SQ FT OF BRIGHT & SPACIOUS ACCOMMODATION
- 26FT KITCHEN/DINER/FAMILY ROOM WITH BUILT IN APPLIANCES
- SPACIOUS LIVING ROOM & STUDY
- PROFESSIONALLY DESIGNED LANDSCAPED REAR GARDEN
- GARAGE WITH ELECTRIC DOOR & DRIVEWAY
- CLOSE TO OPEN COUNTRYSIDE, RIVER IVEL & VILLAGE AMENITIES
- EASY ACCESS TO A1 & TRAIN STATION

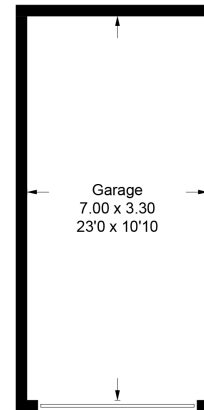
Approximate Gross Internal Area
 Ground Floor = 69.6 sq m / 749 sq ft
 First Floor = 67.2 sq m / 723 sq ft
 Garage = 23.1 sq m / 249 sq ft
 Total = 159.9 sq m / 1,722 sq ft



Ground Floor



First Floor



(Not Shown In Actual Location / Orientation)

This plan is for layout guidance only. Not drawn to scale unless stated. Windows and door openings are approximate. Whilst every care is taken in the preparation of this plan, please check all dimensions, shapes and compass bearings before making any decisions reliant upon them.
 © CJ Property Marketing Ltd Produced for Lane & Bennetts

