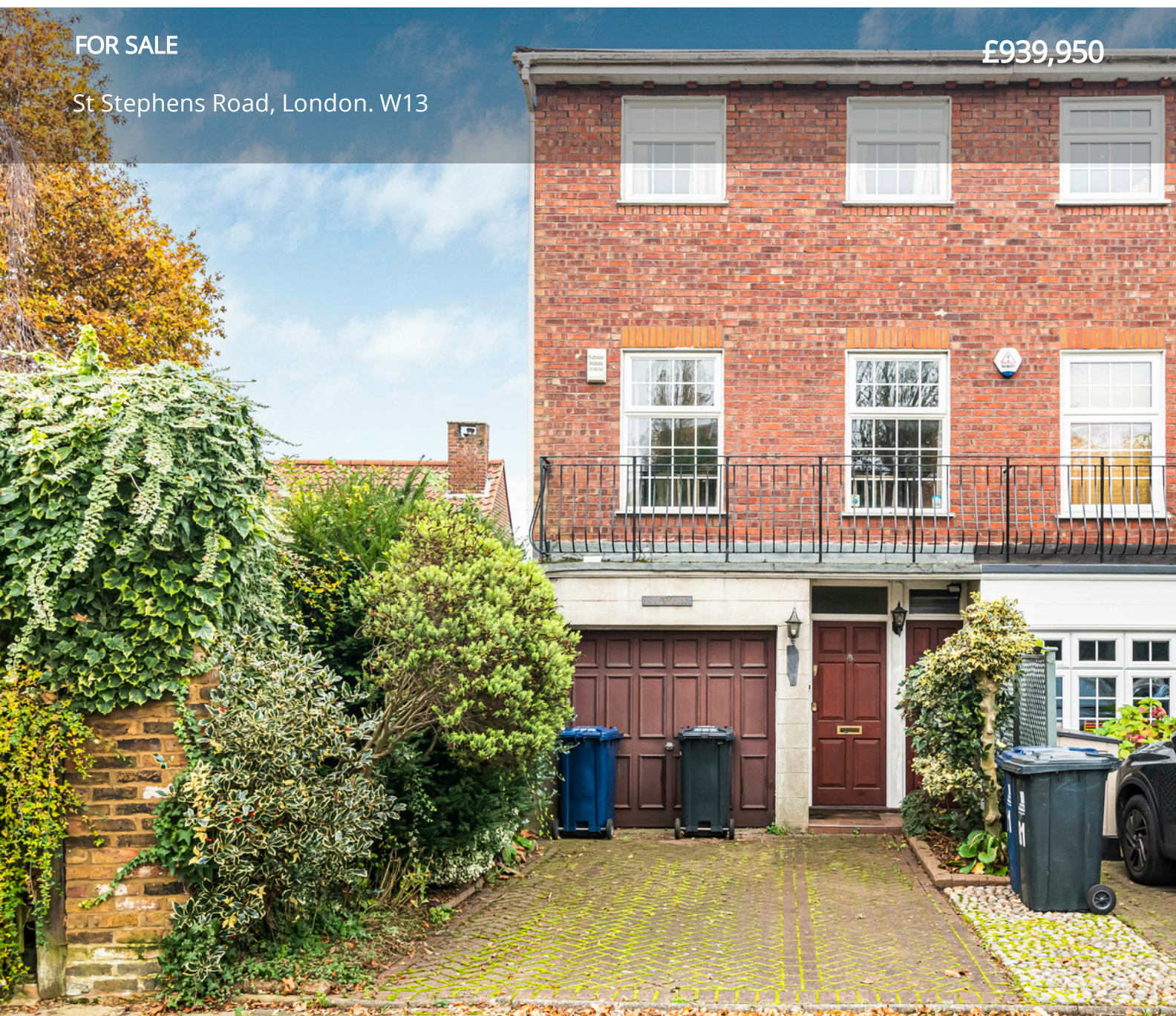


FOR SALE

St Stephens Road, London. W13

£939,950



Peter Gamble & Co. offer for sale this superb 3 BEDROOM, 3 BATHROOM end-of-terrace TOWNHOUSE.

Sitting on this quiet residential street in Ealing's Montpelier neighbourhood equidistant to both Pitshanger Lane and Ealing Broadway within 150m of the outstanding and independent Notting Hill and Ealing High School GDST and 5 minutes from St Benedict's School.

This characterful town house is brought to the market for the first time in over 50 years for a chain free sale.

The property boasts a hugely flexible layout and an abundance of potential for reconfiguration or



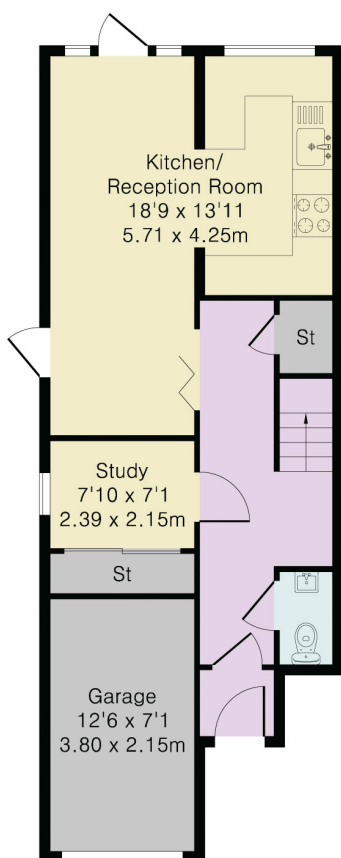


Approximate Gross Internal Area 1475 sq ft - 136 sq m

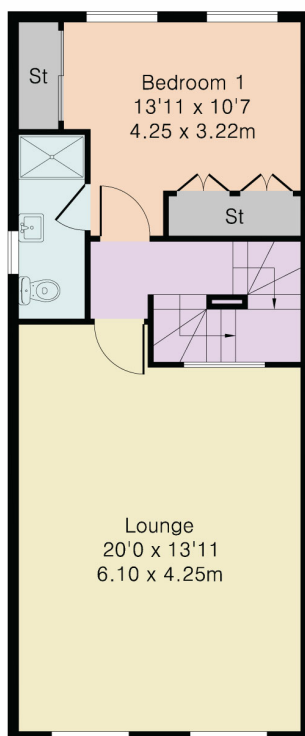
Ground Floor Area 499 sq ft – 46 sq m

First Floor Area 488 sq ft – 45 sq m

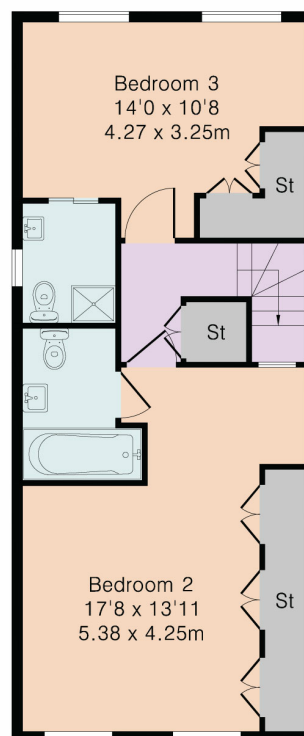
Top Floor Area 488 sq ft – 45 sq m



Ground Floor



First Floor



Top Floor



Although Pink Plan Ltd ensures the highest level of accuracy, measurements of doors, windows and rooms are approximate and no responsibility is taken for error, omission or misstatement. These plans are for representation purposes only as defined by RICS code of measuring practise. No guarantee is given on total square footage of the property within this plan. The figure icon is for initial guidance only and should not be relied on as a basis of valuation.

