



12 Oaktree Close, Letchworth Garden City, Hertfordshire SG6 3XY
Offers Over £600,000 - Freehold



Satchells





Step Inside:

Located in a desirable and well-connected area of Letchworth Garden City, this beautifully presented three double bedroom detached property offers spacious and versatile accommodation ideal for families and professionals alike. Just a short stroll from the town centre and within easy reach of both of the town's secondary schools and local primary schools, the home combines everyday convenience with a peaceful residential setting.

Upon entering, you're welcomed by a bright and airy entrance hall that leads to the principal ground floor rooms. The heart of the home is a stylish kitchen/breakfast room, complete with modern fitted appliances, a breakfast bar, and a rear door offering views and access to the garden. The generous living room is filled with natural light, thanks to impressive bifold doors that open directly onto a well-maintained patio area—perfect for indoor-outdoor living and entertaining.

A separate dining room, which could also serve as a home office, features a charming bay window and adds valuable flexibility to the layout. A modern cloakroom completes the ground floor.

Upstairs, all three bedrooms are genuine doubles, offering ample space for family or guests. The principal bedroom benefits from a garden outlook and a sleek, modern en-suite shower room. Bedroom two also enjoys garden views, while a contemporary family bathroom features a P-shaped bath with overhead shower and a stylish vanity unit.

This is a rare opportunity to acquire a generously sized and thoughtfully designed home in one of Letchworth's most desirable areas.



About The Area:

Letchworth Garden City, often regarded as the world's first garden city, is a vibrant and well-connected community offering a perfect blend of urban convenience and natural beauty. Known for its tree-lined streets, green spaces, and family-friendly atmosphere, Letchworth is a sought-after location for those seeking both tranquillity and easy access to modern amenities. The town boasts a variety of shops, from independent boutiques and cafes to larger retail outlets, making everyday shopping a pleasure. The pedestrianized town centre features a lively market and offers a range of supermarkets, fashion stores, and a selection of restaurants and cafes for dining and socializing. For families, Letchworth is well-served by excellent schools, including a range of primary and secondary schools, all known for their strong academic performance and community focus. The town also offers a variety of parks and recreational facilities, providing plenty of space for outdoor activities and leisure. Transport links from Letchworth are superb, with a mainline train station offering regular services into London King's Cross in under 40 minutes, making it ideal for commuters. The town is also well-connected by road, with easy access to the A1(M) for travel to surrounding areas.







Step outside

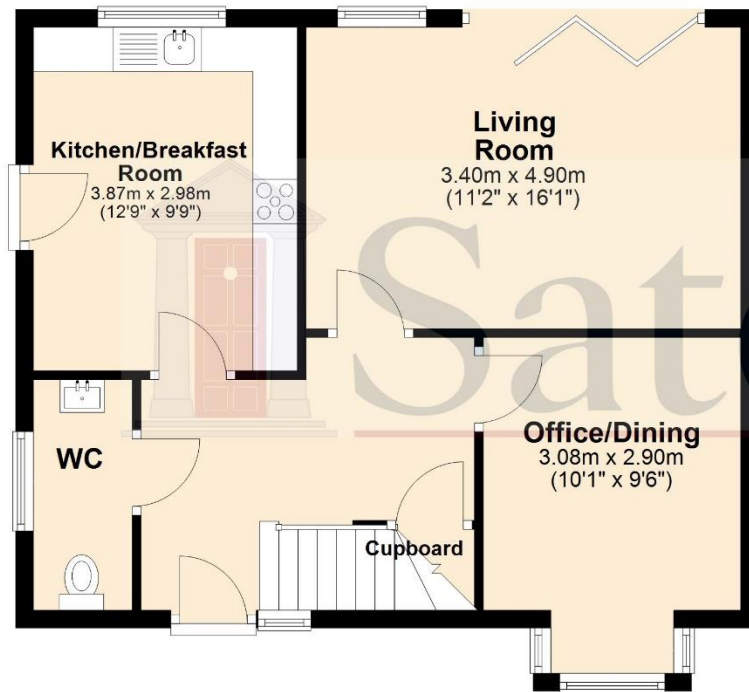
Set back from the street behind mature hedging, the property enjoys a private and welcoming frontage with a small garden patio area that adds charm and kerb appeal. To the side, a private driveway offers off-road parking for two vehicles and leads to a garage, providing additional storage or secure parking.

A side gate gives access to the beautifully maintained rear garden, which has been thoughtfully landscaped to create a tranquil and practical outdoor space. Enjoying plenty of sun throughout the day, the garden is primarily laid to lawn with a paved patio area directly to the rear of the property—ideal for al fresco dining or relaxing on warmer days.

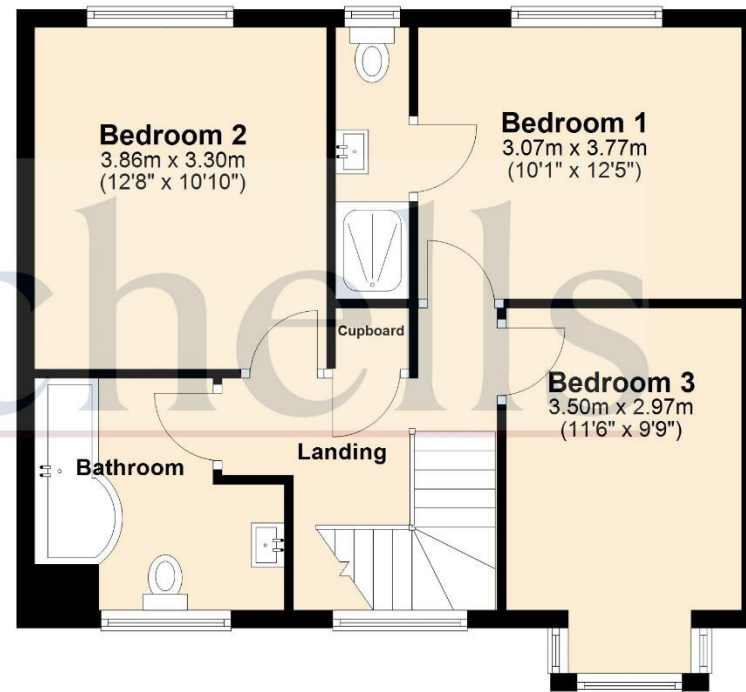
Stepping stones lead to a raised decking area with a sheltered seating space, perfect for entertaining or unwinding in comfort. To the rear, an established flower bed adds colour and interest, while raised planters to the side of the garage offer an ideal spot for growing herbs or vegetables. A garden shed provides handy storage for tools and equipment, completing this attractive and functional outside space.



Ground Floor



First Floor



For illustration purposes only - NOT TO SCALE - Measurements shown are approximate. The size and position of doors, windows, appliances and other features are approximate.
Plan produced using PlanUp.



Satchells
Station Place, Letchworth Garden City, Hertfordshire, SG6 3AQ.
Tel: +44 (0)1462 480077
E mail: letchworth@satchells.co.uk www.satchells.com

