



Abbey Road, Basingstoke, Hampshire. RG24.

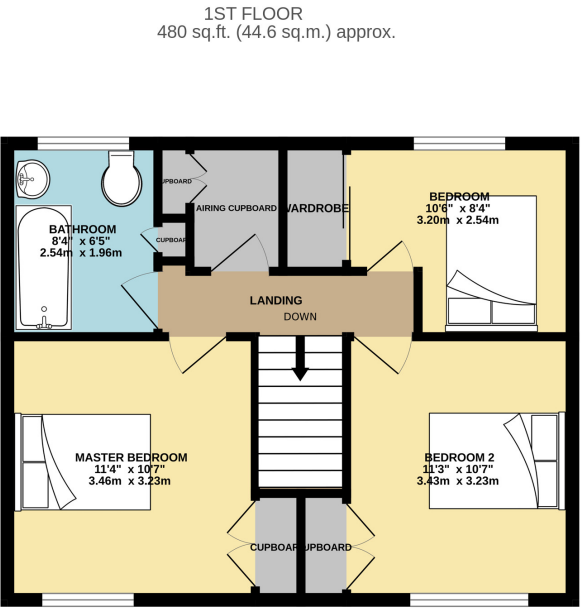
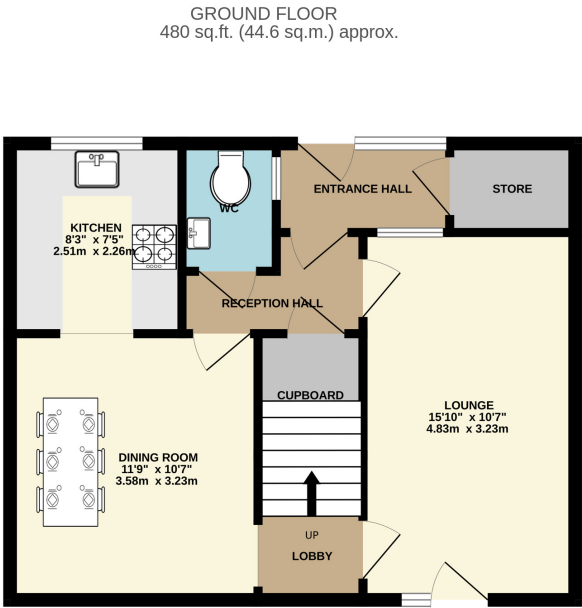
£1,600 pcm

Arins Tilehurst - Available from the 22nd October 2025 and offered furnished is this three bedroom terraced house. The property has various transport links such as bus routes and the A339 and A33. Further accommodation includes a living room, dining room, kitchen, family bathroom and a w/c. Further accommodation includes double glazed windows, a store room, upstairs storage and a private enclosed garden. (Photos from before previous Let).

- Furnished
- Three Bedrooms
- Transport Links
- Lounge
- Dining Room
- Family Bathroom
- Downstairs WC
- Enclosed Garden







TOTAL FLOOR AREA : 960 sq.ft. (89.2 sq.m.) approx.

Whilst every attempt has been made to ensure the accuracy of the floorplan contained here, measurements of doors, windows, rooms and any other items are approximate and no responsibility is taken for any error, omission or mis-statement. This plan is for illustrative purposes only and should be used as such by any prospective purchaser. The services, systems and appliances shown have not been tested and no guarantee as to their operability or efficiency can be given.

Made with Metropix ©2023

Property Description

Ground Floor

Porch

7' 6" x 3' 5" (2.29m x 1.04m)

Hallway

Lounge

10' 7" x 15' 10" (3.23m x 4.83m)

Dining Room

10' 7" x 11' 9" (3.23m x 3.58m)

Kitchen

7' 5" x 8' 3" (2.26m x 2.51m)

W/C

2' 9" x 4' 4" (0.84m x 1.32m)

Store Room

6' 2" x 3' 10" (1.88m x 1.17m)

First Floor

Landing

Master Bedroom

10' 7" x 11' 4" (3.23m x 3.45m)

Bedroom Two

10' 7" x 11' 3" (3.23m x 3.43m)

Bedroom Three

10' 6" x 8' 4" (3.20m x 2.54m)

Bathroom

6' 5" x 8' 4" (1.96m x 2.54m)

Cupboard

3' 6" x 4' 11" (1.07m x 1.50m)

Council Tax Band

C

