



## Hertford Mews, Billy Lows Lane, Potters Bar, EN6 1XW

**£150,000**

- CHAIN FREE
- RECENT MODERN KITCHEN
- VIEWS OVER COMMUNAL AWARD WINNING GARDENS
- OVERNIGHT GUEST SUITE FOR VISITORS
- LAUNDRY ROOM
- IMMACULATELY PRESENTED
- RECENTLY REMODELLED SHOWER ROOM
- COMMUNAL LOUNGE WITH KITCHENETTE
- WALKING DISTANCE TO THE HIGH STREET

108, High Street, Potters Bar, EN6 5AT

01707 245 555

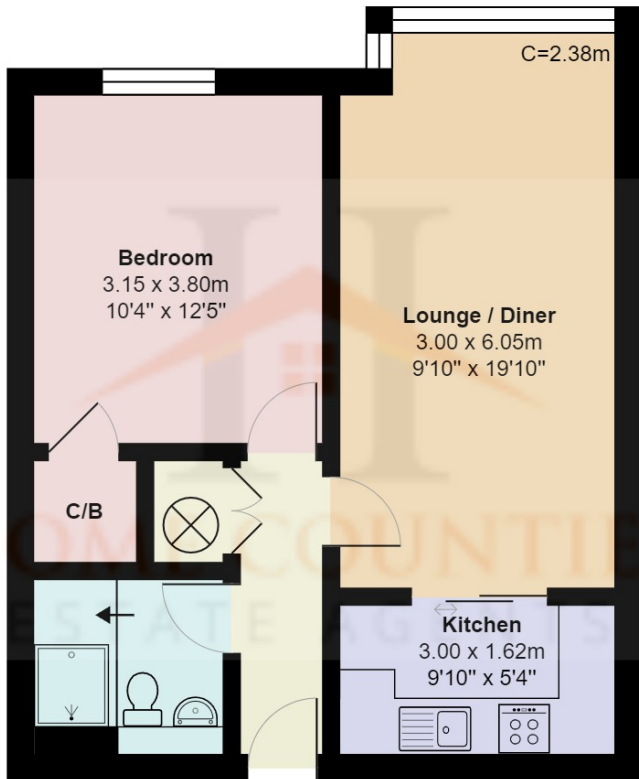
[www.home-counties.com](http://www.home-counties.com)

# Hertford Mews, Billy Lows Lane, Potters Bar, . EN6 1XW

## £150,000 Leasehold

This delightful one bedroom apartment on the second floor of the popular development Hertford Mews, located just a short walk to shops and restaurants and both Highview & Annandale Medical Centres and Parkfield Open Space. The property is offered in immaculate condition and benefits from a recently fitted modern kitchen with Neff appliances, southerly views over the award winning gardens, recently remodelled shower room and new hot and cold water tanks.

Hertford Mews is a retirement block with assisted living, there is a manager on site and pull cords in the rooms in case of emergencies monitored 24hrs a day 365 days a year, there is a communal residents lounge and award wining gardens, residents laundry room and overnight guest suites available for visitors along with guest and resident off street parking.



**Second Floor**  
Area: 47.3 m<sup>2</sup> ... 509 ft<sup>2</sup>

## Hertford Mews, Hertfordshire EN6

Total Area: 47.3 m<sup>2</sup> ... 509 ft<sup>2</sup>

All measurements are approximate and for display purposes only



Energy Efficiency Rating		
	Current	Potential
Very energy efficient - lower running costs		
(92+) <b>A</b>		
(81-91) <b>B</b>		
(69-80) <b>C</b>	75	82
(55-68) <b>D</b>		
(39-54) <b>E</b>		
(21-38) <b>F</b>		
(1-20) <b>G</b>		
Not energy efficient - higher running costs		
England, Scotland & Wales	EU Directive 2002/91/EC	

