

FOR SALE

£305,000

Periwood Crescent, Perivale, Greenford, Greater London. UB6



Peter Gamble & Co. offer to the market this well presented first floor 1 BEDROOM APARTMENT.

This gorgeous apartment is light and airy with a fully equipped and fitted kitchen, good size lounge, double bedroom with fitted wardrobes and a contemporary bathroom suite. This property further benefits from gas central heating, double glazing, communal grounds an allocated parking space and Juliet Balcony.

Located at the foot of Horsenden Hill within very short walking distance of Perivale Central Line station and the A40.



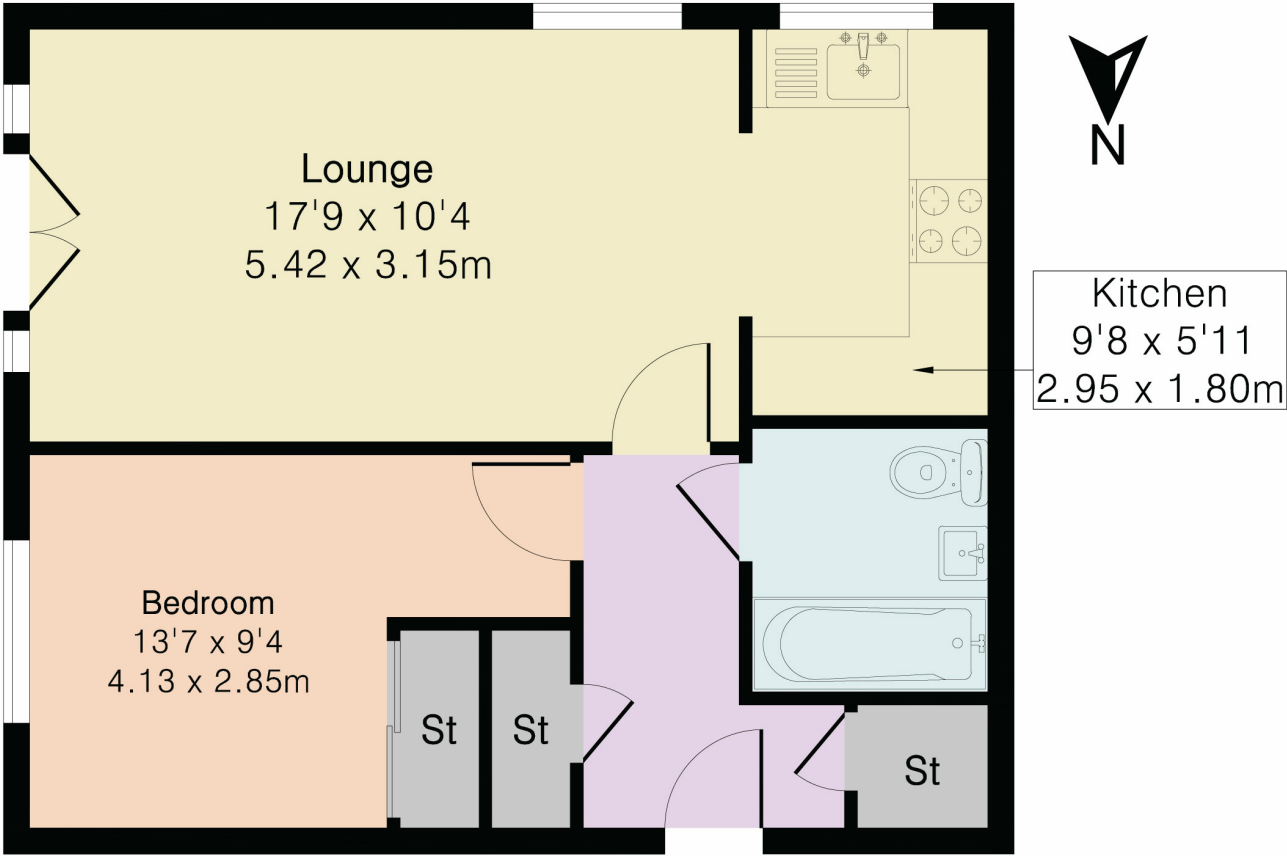








Approximate Gross Internal Area 481 sq ft - 45 sq m



First Floor



Although Pink Plan Ltd ensures the highest level of accuracy, measurements of doors, windows and rooms are approximate and no responsibility is taken for error, omission or misstatement. These plans are for representation purposes only as defined by RICS code of measuring practise. No guarantee is given on total square footage of the property within this plan. The figure icon is for initial guidance only and should not be relied on as a basis of valuation.

