



T: 01909 509001
E: info@bartropanddilks.co.uk
W: www.bartropanddilks.co.uk
A: 78 Bridge Street, Worksop, S80 1JA

FOR SALE

£155,000

8 Wood Avenue, Creswell, Worksop, Nottinghamshire. S80 4EQ



Of possible interest for first time buyers with an internal inspection being advised is this much improved, well presented and decorated three bedroom semi detached home that has gas central heating and uPVC double glazed windows. Being set within this much sought after area, the property has a high standard of fixtures and fittings with the accommodation comprising of; entrance hallway, lounge, modern dining kitchen with a split level cooker, downstairs shower room with double cubicle. On the first floor; landing, three bedrooms and W.C. Outside; double parking to the front and a generous size rear garden.

Ground Floor

Entrance Hallway

With entrance door, stairs to the first floor, front facing window, central heating radiator.

Lounge 4.72m x 3.18m (15' 6" x 10' 5")

With two front facing windows, two central heating radiators.

Dining Kitchen 4.23m x 3.51m (13' 11" x 11' 6")

Refitted modern dining kitchen with wall and base units, worksurfaces, integrated fridge and freezer, central heating radiator, rear facing window, electric hob, oven and extractor.

Shower Room

With a white suite that comprises of; double shower cubicle and mains shower, wash hand basin with vanity unit, low flush w.c, rear facing window, tiling to splashback.

First Floor

Landing

With a front facing window, storage cupboard.

Bedroom One 3.80m x 3.22m (12' 6" x 10' 7")

With a front facing window, central heating radiator.

Bedroom Two 3.83m x 3.43m (12' 7" x 11' 3")

With a rear facing window, central heating radiator.

Bedroom Three 3.43m x 2.40m (11' 3" x 7' 10")

With a rear facing window, central heating radiator.

W.C

With a front facing window, low flush w.c.

Outside

Gardens

Front and rear gardens. The rear being a generous size.

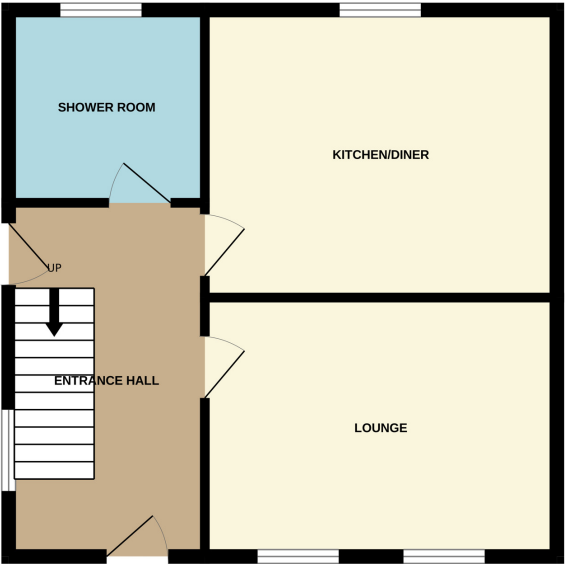
Driveway





GROUND FLOOR

1ST FLOOR



Whilst every attempt has been made to ensure the accuracy of the floorplan contained here, measurements of doors, windows, rooms and any other items are approximate and no responsibility is taken for any error, omission or mis-statement. This plan is for illustrative purposes only and should be used as such by any prospective purchaser. The services, systems and appliances shown have not been tested and no guarantee as to their operability or efficiency can be given.
Made with Metropix ©2026

