

Rent
Me



Holly Farm Court, Widnes.

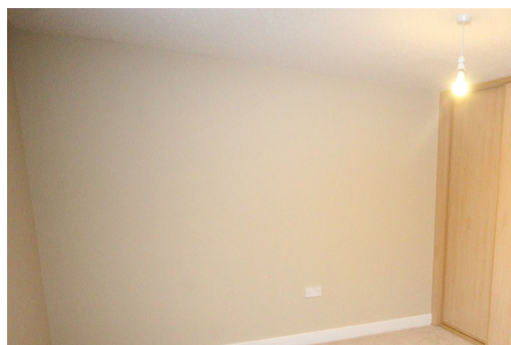
£595 pcm

Ground Floor Apartment | Two Bedrooms | Open Plan Living Room/Kitchen With Appliances |
Bathroom With Shower | Intercom Access | Allocated Parking | Viewings Highly Recommended |



Ashtons are pleased to bring to the rental market, a two bedroom ground floor apartment in the popular Upton Rocks area of Widnes. This modern apartment has two good sized bedrooms with fitted wardrobes to master, three piece bathroom suite with over head shower, an open plan living room and kitchen with brand new appliances. The property has allocated parking and has secure intercom access.

Available end of June.



*Contact your local office
to arrange a viewing:*

Padgate: 01925 479334
Great Sankey: 01925 454300
Winwick: 01925 232146
Stockton Heath: 01925 453400
St.Helens: 01744 754120
Wigan: 01942 498862
Culcheth: 01925 764744
Ashton-In-Makerfield: 01942 364446
Newton-Le-Willows: 01925 907770
Commercial Office: 01925 907709
Lettings Head Office: 01925 873533
Financial Services: 01925 221234

Viewing Arrangements

Viewing is strictly by appointment only through Ashtons Estate Agency.

Disclaimer Property Details

These particulars, whilst being believed to be accurate are set out as a general outline only for guidance and do not constitute any part of an offer or contract. Intending purchasers should not rely on them as statements of representation of fact, but must satisfy themselves by inspection or otherwise as to their accuracy. We have not carried out a detailed survey nor tested the services, appliances and specific furnishings. The measurements given are approximate.

No person in this firm's employment has the authority to make or give any representation or warranty in respect of the property.

All details, photographs and floorplans are the copyright of Ashtons Estate Agency.



How much you can borrow?
Speak to a mortgage expert in your local office.

Ashtons Financial Services

Ashtons.net **rightmove**

PrimeLocation.com **Zoopla.co.uk**

Ashtons