

# KATHERINES WALK

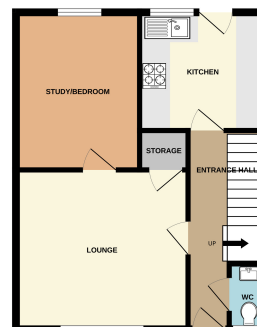
£199,950

## Key Features

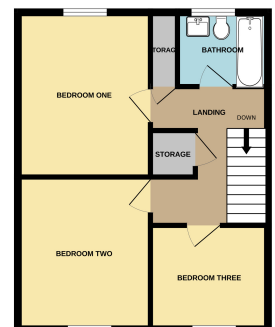
- ✓ Set in an established residential location.
- ✓ Mid-Terraced House.
- ✓ Three Bedrooms.
- ✓ Two Reception Rooms.
- ✓ Off Road Parking.
- ✓ Garden.



GROUND FLOOR  
455 sq.ft. (42.3 sq.m.) approx.



1ST FLOOR  
455 sq.ft. (42.3 sq.m.) approx.



TOTAL FLOOR AREA: 910 sq.ft. (84.6 sq.m.) approx.  
Made with Merge 2025