



Guide Price £675,000 Freehold



Whitfield Road, Bexleyheath, Kent DA7 5LU





## PROPERTY DESCRIPTION

GUIDE PRICE £675,000 - £700,000 • RE/MAX SELECT are delighted to offer for sale this immaculate extended 1930s Feakes&Richards semi-detached house, close to schools, amenities, and transport links including Bexleyheath station.

This stunning property comprises 5/6 bedrooms, open-plan kitchen/dining room, through-lounge, family room, study room, upstairs family bathroom, and ground floor shower room. Further benefits include off street parking for 2 cars, summerhouse, 70ft (approx) garden, double glazing, and gas central heating.

Total Internal Area approx: 1,918.66 sq ft (178.25 sq m).





## ROOM DESCRIPTIONS

### Ground Floor

#### Porch

Tiled flooring, double glazed, door leading to hallway.

#### Hallway

Carpeted, radiator, understairs storage cupboard, double glazed window; carpeted stairs leading to first floor.

#### Living Room

7.15m x 3.63m (23' 5" x 11' 11") Wood-effect flooring, radiators, feature fireplace, double glazed bay windows.

#### Family Room

3.33m x 3.13m (10' 11" x 10' 3") Wood-effect flooring, radiator, double glazed windows; double glazed french doors leading to rear garden.

#### Kitchen / Breakfast Room

6.08m x 4.05m (19' 11" x 13' 3") Tiled flooring; range of soft-closing wall and base units with wood worktops and tiled splashback; composite sink and drainer with mixer tap; gas hob, integrated extractor hood, oven/grill; space and connections for fridge/freezer; space and connections for washing machine; space and connections for tumble dryer; double glazed windows; door leading to rear garden.

#### Study / Bedroom

4.34m x 1.51m (14' 3" x 4' 11") Wood-effect flooring, radiator, double glazed windows; door leading to shower room.

#### Shower Room

2.66m x 1.50m (8' 9" x 4' 11") Tiled flooring, tiled walls; large shower enclosure with thermostatic rainfall attachment; vanity unit with wash-hand basin and mixer tap; w/c, heated towel-rail, extractor fan.

### First Floor

#### Landing

Carpeted, storage cupboard; carpeted stairs leading to second floor.

#### Bedroom

3.50m x 3.35m (11' 6" x 11' 0") Wood-effect flooring, radiator, double glazed bay windows.

#### Bedroom

3.90m x 2.82m (12' 10" x 9' 3") Carpeted, radiator, double glazed bay windows.

#### Bedroom

3.64x 3.34m (11' 11" x 10' 11") Carpeted, radiator, double glazed windows.

#### Bedroom

2.70m x 2.30m (8' 10" x 7' 7") Carpeted, radiator, double glazed windows.

#### Family Bathroom

2.71m x 1.47m (8' 11" x 4' 10") Tiled flooring, part tiled walls; panelled bath with shower-mixer; wash-hand basin with mixer tap; w/c, double glazed frosted windows.

### Second floor

#### Bedroom

5.50m x 5.17m (18' 1" x 17' 0") Carpeted with wood-effect flooring to side; radiator, eaves storage, Velux windows, double glazed windows.

### External

#### Front Driveway

Off street parking for 2 cars; block-paved.

#### Rear Garden

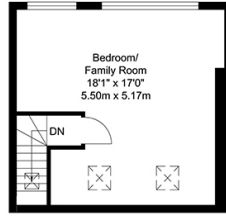
Approximately 70ft; patio, lawn, decking area, outdoor tap, outdoor powerpoint; mature shrubs and bushes; 2 sheds.

#### Garden Room

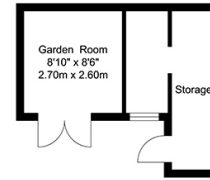
2.70m x 2.60m (8' 10" x 8' 6") Electrical power and lighting; windows.



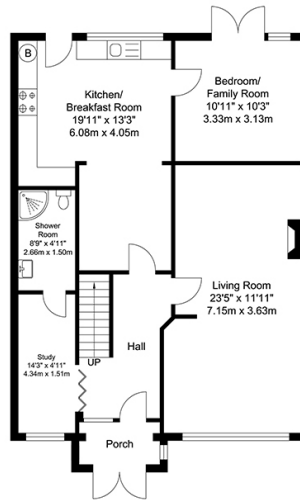
# FLOORPLAN



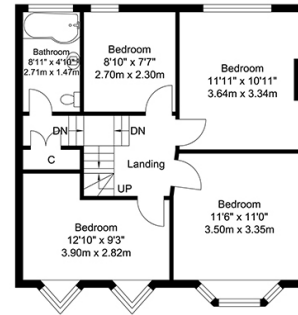
Second Floor  
Approximate Floor Area  
306.12 SQ.FT.  
(28.44 SQ.M.)



Outbuilding  
Approximate Floor Area  
166.08 SQ.FT.  
(15.43 SQ.M.)



Ground Floor  
Approximate Floor Area  
875.64 SQ.FT.  
(81.35 SQ.M.)



First Floor  
Approximate Floor Area  
570.81 SQ.FT.  
(53.03 SQ.M.)

TOTAL APPROX FLOOR AREA 1918.66 SQ. FT / 178.25 SQ. M  
For Identification Purposes Only.

