



Kirkstone Drive, York YO31 0LY

£389,950 - EPC Rating - D

Approx. Gross Internal Floor Area 1390 sq. ft / 129.14 sq. m  
Outbuilding 76 sq. ft / 7.07 sq. m  
Total 1466 sq. ft / 136.21 sq. m

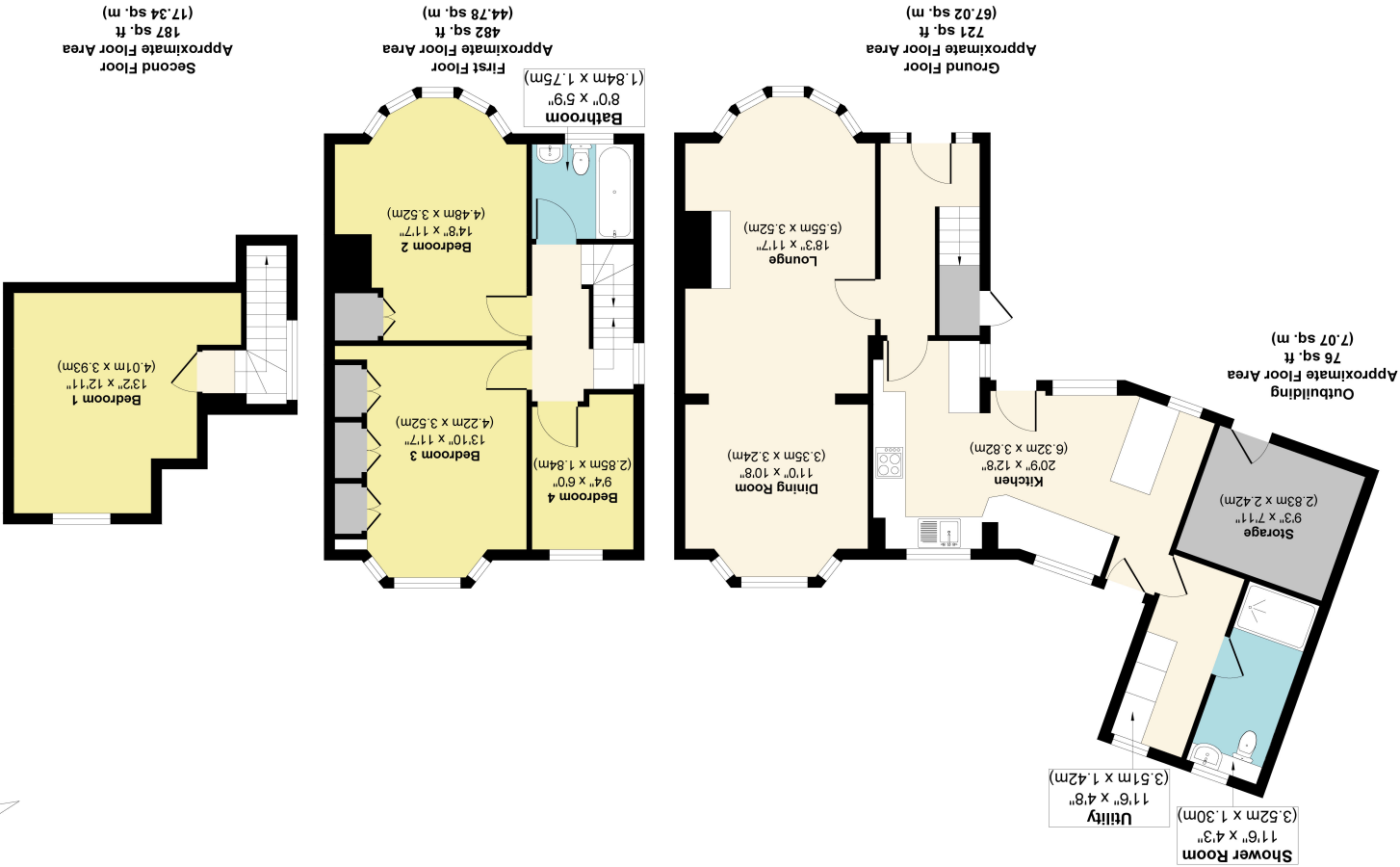


Illustration for identification purposes only, measurements approximate, not to scale.  
Copyrighted and Produced by MS Property Marketing.

Our property particulars do not represent an offer or contract, or part of one. The information given is without responsibility on the part of the agents, sellers or lessors) and you should not rely on the information as being factually accurate about the property, its condition or its value. Neither redmove nor anyone in its employment or acting on its behalf has authority to make any representation or warranty in relation to this property. We have not carried out a detailed survey, nor tested the services, appliances or fittings at the property. The images shown may only represent part of the property and are as they appeared at the time of being photographed. The areas, measurements and distances are approximate only. Any reference to alterations or use does not mean that any necessary planning permission, building regulation or other consent has been obtained.

YORK 01904 488 444

23B Whitby Avenue

York

YO31 1EU

Helping York move for over a decade

redmove

info@redmove.co.uk



28 Kirkstone Drive, York YO31 0LY

Ready to move in to and enjoy is this extended spacious home situated in the desirable area of Burnholme with good schools and local amenities nearby. The property briefly comprises; entrance hallway, large lounge with bright bay window and feature fireplace, opening into a dining room with bay window, extended shaker style breakfast kitchen with a wide range of shaker style wall and base units, separate utility and a modern ground floor shower room. To the first floor are two good sized double bedrooms each with fitted wardrobes, a modern three piece house bathroom and a single bedroom / study. The second floor is another good sized double bedroom with storage. Positioned on an enviable corner plot the property boasts a large and well manicured front garden with driveway for off street parking outbuilding / small garage for extra storage. To the rear is an enclosed garden complete with lawn, mature borders. Likely to generate high interest levels, we recommend viewing early to avoid disappointment.

- Extended Semi Detached Home
- Desirable Location
- Corner Plot
- Three Double Bedrooms
- Fourth Bedroom / Study
- Large Lounge through Dining Room
- Extended Kitchen
- utility
- Ground Floor Shower Room
- Driveway

Travelling on Tang Hall Lane from Hull Road turn right onto Fourth Avenue and continue forward onto Starkey Crescent. Turn left on Burnholme Drive, right onto Burnholme Avenue and left onto Kirkstone Drive where the property will be seen on the right hand side and can be identified by our for sale sign.

Burnholme is a popular residential area that is conveniently positioned for access to York City centre, A1079 and Stockton Lane plus the shopping and leisure facilities of Monks Cross and Vangarde. Local amenities are available with the wider range of facilities in Heworth Village, Osbaldwick or the City Centre. Hempland Primary School is the local primary and Archbishop Holgate Secondary School.

