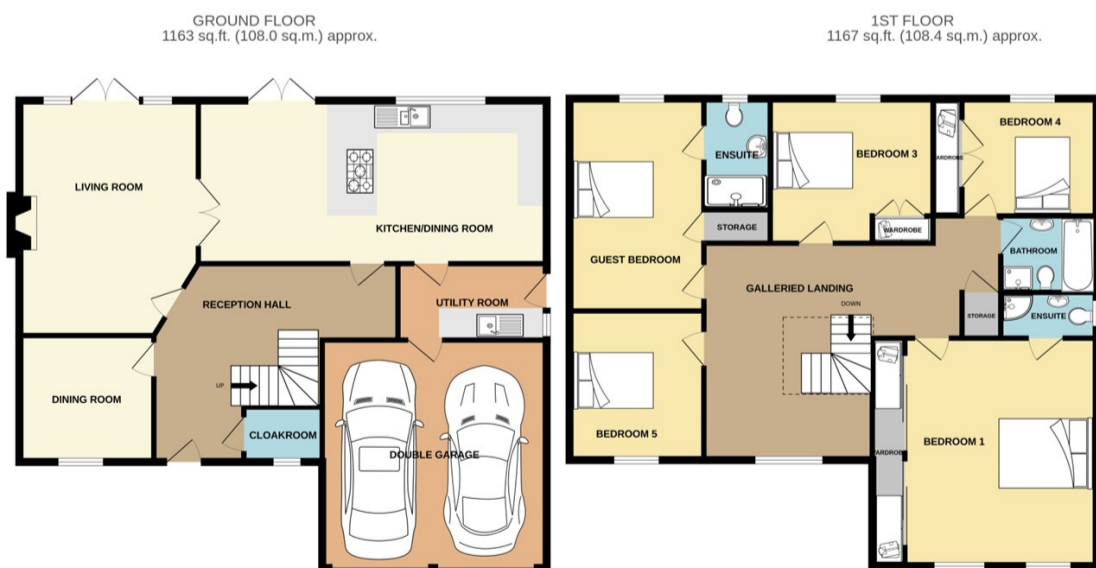




Bourne

£590,000



EXECUTIVE DETACHED FAMILY HOME Rosedale are delighted to offer for sale this impressive five double bedroom detached family home located in one of Bourne's most sought after non estate locations, within walking distance of the town centre and Bourne grammar. The property has been tastefully decorated in Farrow and Ball and offers excellent family accommodation with over 2400 sq feet of accommodation. There is a light and airy lounge overlooking the South facing garden with multi fuel burning stove, dining room/study, fantastic spacious modern fitted kitchen incorporating a sitting area, with utility room off and internal door to garage there is also a downstairs cloakroom. The beautiful bespoke oak staircase takes you up the the galleried landing with access to a large master bedroom with en-suite, and fitted wardrobes, the guest bedroom also boasts an en-suite, three further bedrooms and family bathroom. Outside there is a block paved in and out driveway providing ample off road parking leading to a double garage. The rear garden is South facing and benefits from a block paved patio which leads to a well maintained garden being well stocked with shrub and tree borders, there is also a quality oak built summer house and gated side access. To fully appreciate this extinctive family home viewings are highly recommended. EPC Energy Rating C/Council Tax Band F.