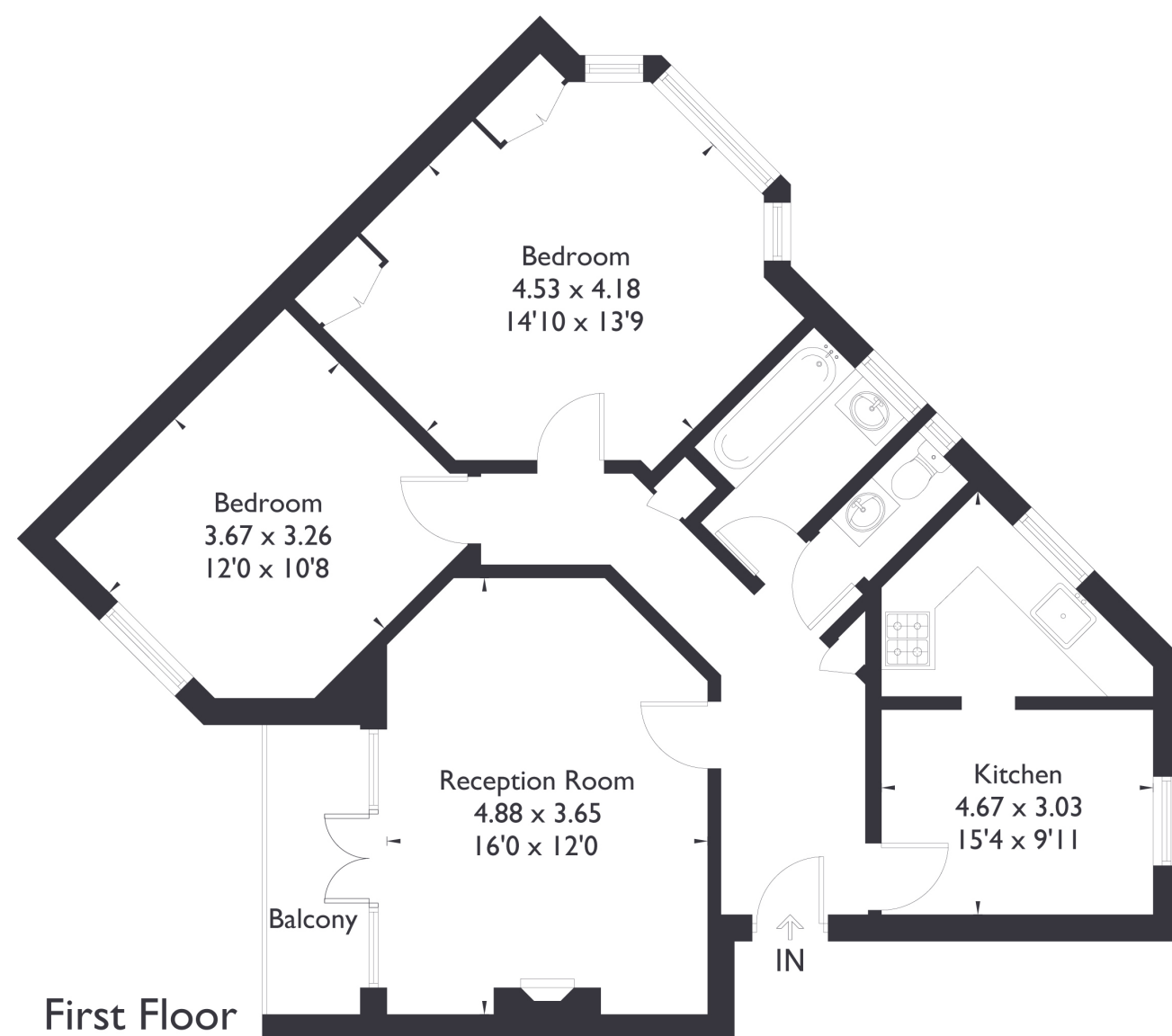




## Edmonscote, Argyle Road, W13

Approximate Floor Area = 76 sq m / 818 sq ft



### 2 BEDROOM FLAT

## Argyle Road, W13 GUIDE PRICE £500,000

Welcome to this Art Deco-style, two bedroom, one bathroom property with a separate WC, nestled in a prime Ealing location. This unique home features a spacious reception room that opens onto a beautiful balcony, a well-appointed separate kitchen, and two generously sized double bedrooms.

Lovingly looked after by the current owner, it's the perfect home.

### FEATURES

- Chain Free
- Two Bedrooms
- One Bathroom/Separate W/C
- Separate Kitchen/Living Space
- Off-Street Parking
- West Ealing Station (Elizabeth Line)
- EPC Rating D





2 BEDROOM FLAT

## Argyle Road, W13

The property offers the convenience of off-street parking and access to a communal garden, perfect for enjoying some outdoor space.

Ideally situated, West Ealing Station and the Elizabeth Line are just a 12-minute walk away, providing excellent connectivity.

Additionally, Pitshanger Lane's vibrant amenities are close by, and the A40 is only a 5-minute drive, offering easy access to both the city and the countryside.

A fantastic opportunity to enjoy both style and convenience in the heart of Ealing!

EPC Rating D.

