

**2 Bedroom(s), Semi-Detached Bungalow, Freehold**

**Fairfield Close, Bessacarr, Doncaster.**



- 3D Virtual Tour Available
- Lounge
- Driveway
- Contemporary Bathroom
- Local Amenities and Transport Links

- Kitchen
- Two Bedroom Semi Detached Bungalow
- Rear Enclosed Garden with Bar
- Popular Location in Bessacarr
- Off Street Parking For Four Cars

**£210,000**  
**For Sale**

*Book your viewing today* Tel: 01302 247754

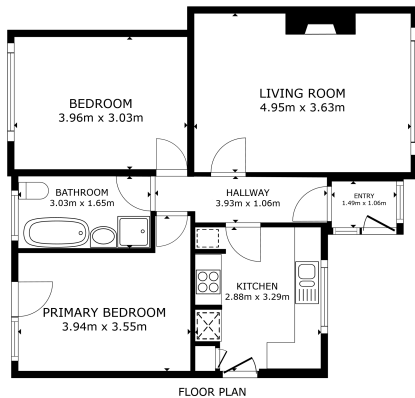


## Owner's View

Nestled in the sought-after area of Bessacarr, this well-presented two-bedroom semi-detached bungalow offers a fantastic opportunity for those seeking comfortable, single-level living in a peaceful residential setting. Set on a quiet cul-de-sac, the property features a private driveway providing off-street parking for up to 4 cars. Inside, you'll find a bright and spacious lounge, a kitchen with plenty of space for appliances, and a stylish contemporary family bathroom. Both bedrooms are generously sized, with one enjoying direct access to the rear garden through patio doors—perfect for bringing the outside in during warmer months. The enclosed rear garden is a true highlight, offering a private outdoor retreat complete with a bar area—ideal for entertaining or relaxing with friends and family. With its great location, excellent layout, and attractive outdoor space, this bungalow is ideal for downsizers, first-time buyers, or anyone looking for a comfortable and convenient home.

## Internals

### Floor Plan



GROSS INTERNAL AREA  
FLOOR PLAN 46.3 sqm  
TOTAL: 64.3 sqm  
SIZES AND EXPRESSIONS ARE APPROXIMATE, ACTUAL MAY VARY

Matterport

### Kitchen



### Lounge





## Master Bedroom



## Bedroom



## Bathroom



## Externals

### Front Aspect

### Rear Garden

### Property Information

Council Tax Band - B

Utilities - Mains Gas, Mains Electricity, Mains Water

Water Meter - yes

Tenure - freehold

Solar Panels - No

Space Heating System -

Approximate Heating System Installation Date - Unsure

Water Heating System - Unsure

Approximate Water Heating Installation Date -

Boiler Location - in kitchen in a cupboard

Approximate Electrical System Installation Date -

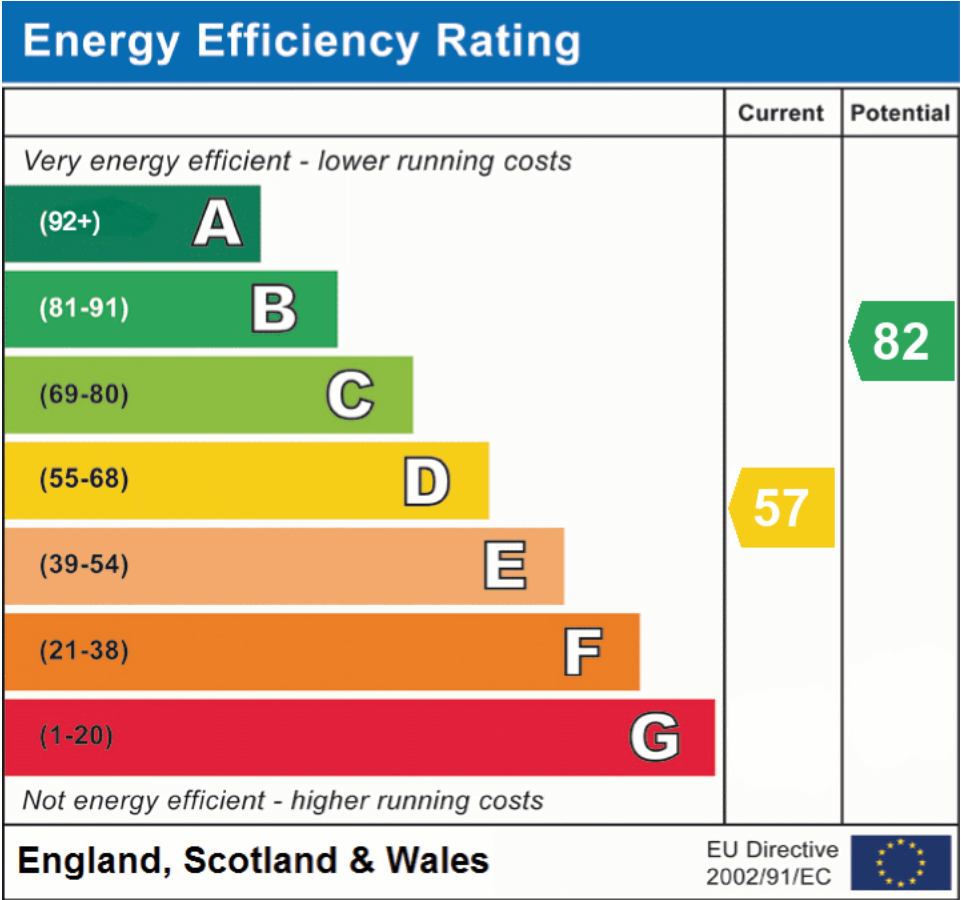
Permanent Loft Ladder - no

Loft Insulation - yes

Loft Boarded out - no

Whilst every effort is made to ensure that the information contained in these particulars is reliable, they do not constitute or form part of an offer or any contract. The Property Hive accept no liability for the accuracy of the contents, and therefore they should be independently verified by prospective buyers or tenants before agreeing an offer. All measurements provided are approximate and should be verified before exchange of contracts. No appliances, fixtures or fittings have been tested and should be checked by the buyer before exchange of contracts to ensure they are in good working order.

## Energy Performance Certificate



All measurements provided are approximate and should be verified before exchange of contracts. No appliances have been tested and should be checked to ensure they are in good working order.