

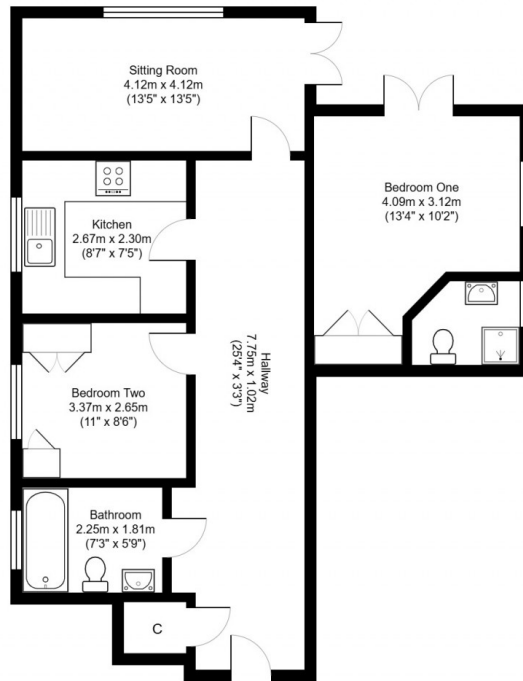


3 Heatherlea Lodge

Bickerley Road

RINGWOOD, BH24 1DF





3 Heatherlea Lodge Bickerley Road RINGWOOD, BH24 1DF

Modern First floor 2 bedroom 2 bathroom apartment with sun balcony over looking the Bickerley and water meadows beyond. The property offers 2 spacious bedrooms with the master having a ensuite shower, fitted wardrobes and access to a west facing sun balcony. Lounge with access to the balcony, fitted kitchen and family bathroom. Outside there are communal gardens and a allocated parking space. Situated close to Bickerley green with its picturesque walks along the River Avon and just short walking into Ringwood town centre. NO FORWARD CHAIN

KEY FEATURES

- MASTER BEDROOM WITH ENSUITE AND SUN BALCONY
- LOUNGE / DINING AREA WITH ACCESS TO BALCONY
- FITTED KITCHEN
- FAMILY BATHROOM
- ALLOCATED PARKING SPACE



N.B. NONE OF THE APPLIANCES/SERVICES MENTIONED IN THESE DETAILS HAVE BEEN TESTED FOR WORKING CONDITION BY ANTHONYS OF RINGWOOD

Property Ref: 24629807

These particulars are believed to be correct, but their accuracy is not guaranteed and they do not constitute an offer or contract