



REDUCED



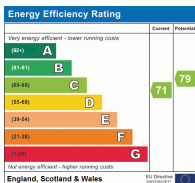
D'arcy Drive, Harrow, Greater London HA3

IDEAL HOME FOR A LARGE FAMILY

Welcome to this six-bedroom semi-detached property fully extended to the side, rear and loft. Located in a sought-after residential area, boasting a rear garden and a charming patio area, perfect for outdoor entertaining and relaxation. The off-street parking provides convenience for multiple vehicles, while the outbuilding offers additional storage space or potential for a home office or gym.

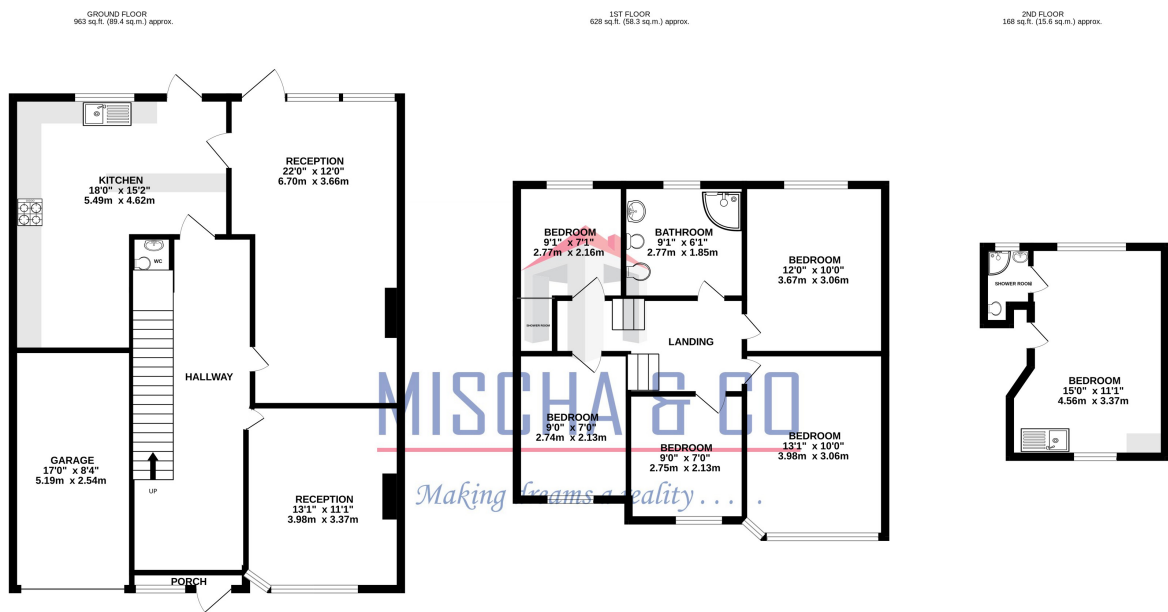
Internally, the house offers a bright and airy living space with modern fixtures and fittings throughout. The open-plan kitchen and dining area create a sociable hub for family gatherings, while the bedrooms provide ample space for rest and relaxation. Additionally, there is potential to convert the side garage into a self-contained studio, offering further versatility.

The property is conveniently situated close to local schools, amenities and transport links making it an ideal family home. Don't miss out on the opportunity to make this property your own. Contact us today to arrange a viewing and secure your dream home.



Offers in Region of £754,950

Floorplan



TOTAL FLOOR AREA : 1758 sq.ft. (163.3 sq.m.) approx.

Whilst every attempt has been made to ensure the accuracy of the floorplan contained here, measurements of doors, windows, rooms and any other items are approximate and no responsibility is taken for any error, omission or mis-statement. This plan is for illustrative purposes only and should be used as such by any prospective purchaser. The services, systems and appliances shown have not been tested and no guarantee as to their operability or efficiency can be given.
Made with Metropix 5/2025

NB: Please note that all fittings, kitchen appliances and heating systems have not been tested by Mishca & Co Sales & Lettings. Whilst we endeavour to make our sales details accurate and reliable. Room sizes should not be relied upon for carpets and furnishings. If there is any point, which is of particular important to you, please contact our office and we will be pleased to verify any information for you. Do so particularly if contemplating travelling some distance to view this property.

