



MUNDAY STREET
ANCOATS

£795

 1 BEDROOM

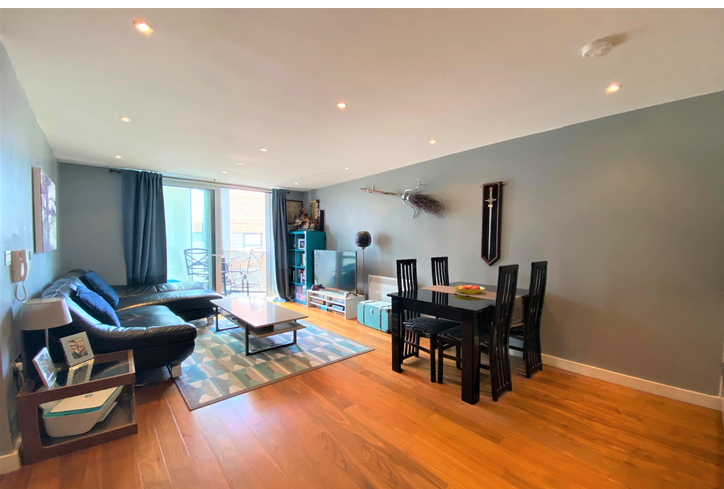
 1 BATHROOM

 1 RECEPTION

 AVAILABLE 02-08-
2021



VITALSPACE
INDEPENDENT ESTATE AGENTS



Munday Street, Ancoats, M4 7BB

****AVAILABLE 02-08-21**** - VITALSPACE ESTATE AGENTS are pleased to offer for rental this spacious ONE DOUBLE BEDROOM fifth floor apartment located in Milliners Wharf next to New Islington metro link station and walking distance to Piccadilly. In brief, this superb apartment comprises; a large open plan living area with L shape sofa and access to a private south facing balcony, the kitchen is sleek and well presented with dining table and four chairs. The property also benefits from a large double bedroom with fitted wardrobes and a luxury three piece bathroom with a shower above the bath. Milliners Wharf benefits from 24hr concierge and is situated just minutes from the New Islington Metrolink stop. Piccadilly, Ancoats and the Northern Quarter are all within a short walk away putting you within reach of a range of popular bars, shops, restaurants and cafes. Available 2nd August on a furnished basis. Contact VitalSpace Estate Agents to arrange an internal inspection.

NOTE

This property is available from 02-08-21 on a furnished basis with a minimum 6 month tenancy. The rent will be payable monthly, in advance and will be exclusive of council tax and all other utilities. A security deposit of the equivalent of one month's rent plus £100.00 will be payable prior to the tenancy start date. Restrictions; No Smokers, No Pets, Tenant(s) income no less than monthly rent x 30

Right to Rent in the UK checks will be completed via our referencing agency before a tenancy can be granted. All tenants over the age of 18 must provide original relevant identification documents at the point of submitting an application to rent.

If your looking to apply for this property, please visit our website where you can complete our online rental application form. For further assistance in this regard, please contact our lettings department.



Environmental Impact (CO ₂) Rating	Predicted
Very environmentally friendly - lower CO ₂ emissions	
(92 to 100) A	
(81 to 91) B	
(69 to 80) C	
(55 to 68) D	
(39 to 54) E	
(21 to 38) F	
(1 to 20) G	
Not environmentally friendly - higher CO ₂ emissions	
England, Wales & N.Ireland	EU Directive 2002/91/EC