

66 Hazelmere Road, Petts Wood, Orpington, Kent, BR5 1PD

**Property Images**

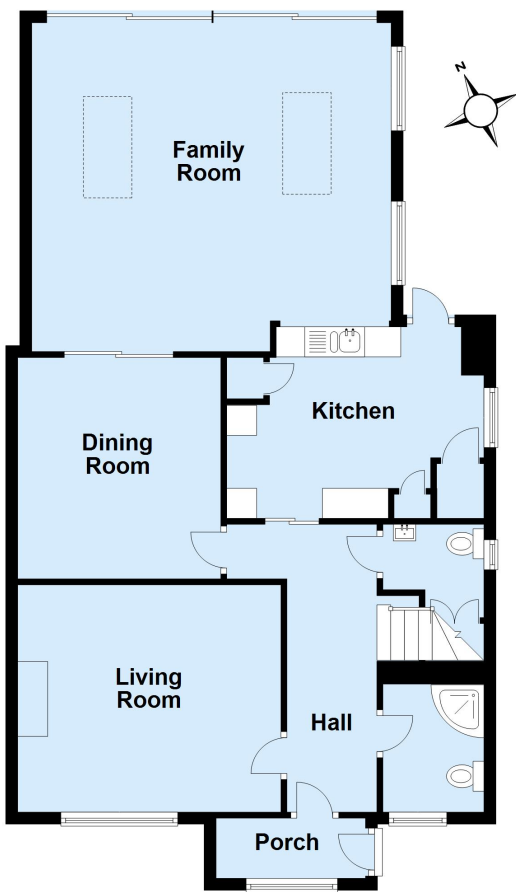






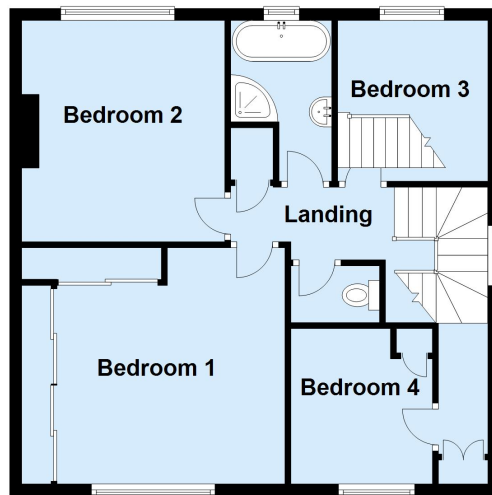
### Ground Floor

Approx. 96.1 sq. metres (1034.7 sq. feet)



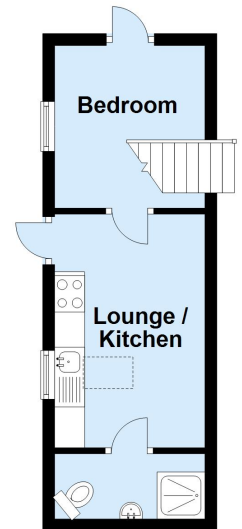
### First Floor

Approx. 60.2 sq. metres (648.2 sq. feet)



### Outbuilding

Approx. 19.8 sq. metres (213.3 sq. feet)



Total area: approx. 176.2 sq. metres (1896.2 sq. feet)