



Day & Co  
ESTATE AGENTS

28 Cavendish Street  
Keighley  
BD21 3RG



5 Monarch Gate, Denholme,  
Bradford, West Yorkshire, BD13  
4EJ

£430,000

T: 01535 664609

W: [www.dayandcoestateagents.co.uk](http://www.dayandcoestateagents.co.uk)

E: [keighley@dayandcoestateagents.co.uk](mailto:keighley@dayandcoestateagents.co.uk)



- Fabulous Detached Modern Bungalow
- Two Reception Rooms & Conservatory
- Generous Size Plot (Approx Half An Acre)/Stunning Countryside Views

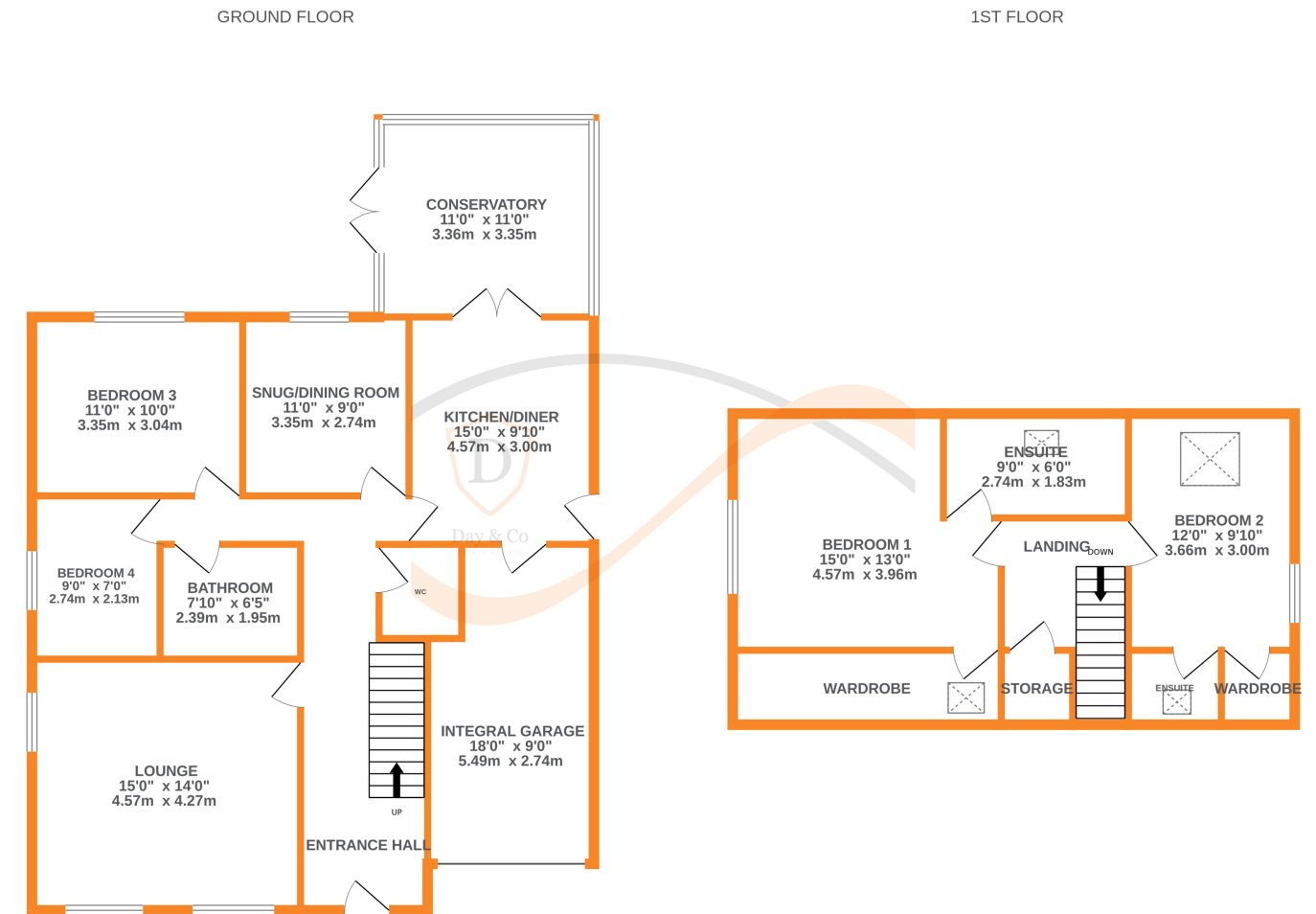
- Four Bedrooms & Three Bathrooms
- Ample Parking & Integral Garage
- EPC Rating D

## SUMMARY

**\*\*A SUPERB 4 BEDROOM MODERN DETACHED BUNGALOW,STYLE PROPERTY GENEROUS SIZE PLOT (APPROX. HALF AN ACRE) WITH STUNNING COUNTRYSIDE OUTLOOK!!\*\*** Having 3 bathrooms, 2 reception rooms, conservatory, ample parking, integral garage - VIEWING ESSENTIAL TO FULLY APPRECIATE!! Awaiting EPC.

## FULL DESCRIPTION

Viewing is essential to fully appreciate this fabulous four bedroom ( and three bathrooms) detached modern bungalow style property situated on a generous size plot spanning approximately half an acre with stunning countryside outlook. The well proportioned accommodation comprises of an entrance hall giving access to a useful cloaks WC, the spacious lounge has three double glazed windows and a living flame gas coal effect fire in surround. There is a snug with double glazed patio doors leading to the rear garden. The dining kitchen has a range of base and wall mounted units, range style cooker, double glazed door to the side and access to the integral garage. The dining kitchen opens out into the conservatory which in turn has double glazed patio doors leading to the rear garden. There are two bedrooms on this level and the house bathroom which has a three piece suite comprising of a bath, WC, wash hand basin. To the first floor there are two further bedrooms, the master having an en-suite bathroom with bath and shower over, WC, wash hand basin, the second bedroom having an en-suite shower room with shower cubicle, WC, wash hand basin. Both the first floor bedrooms have walk-in wardrobes. Externally the property is situated on a generous size plot measuring just over half an acre and having a private drive leading to ample parking, a good size rear garden with gate leading to a meadow. EPC Rating D.



Whilst every attempt has been made to ensure the accuracy of the floorplan contained here, measurements of doors, windows, rooms and any other items are approximate and no responsibility is taken for any error, omission or mis-statement. This plan is for illustrative purposes only and should be used as such by any prospective purchaser. The services, systems and appliances shown have not been tested and no guarantee as to their operability or efficiency can be given.  
Made with Metropix ©2024