



12 Briarwood Close, Feltham, Greater London. TW13 4QL

- Open Plan Kitchen/ Living Room
- Modern Kitchen Units
- Large Bedroom
- Modern Bathroom
- Double Glazing
- Allocated Parking Space
- Private Rear Garden
- Emersion Heater Installed 2018
- New Windows in 2018
- New Soffits and Guttering in 2018



PROPERTY DESCRIPTION

A spacious and beautifully presented end terraced home with a modern interior, private rear garden and driveway. Located in a popular and quiet residential road, just a short distance from Feltham and Ashford High Streets, train stations and out of the ULEZ zone. Contact our office now for more information.



ROOM DESCRIPTIONS

Living Room/ Kitchen

Approached via a side aspect UPVC door and dual side aspect double glazed windows to garden. Carpeted flooring and wall mounted economy 7 storage heater. Leading to open plan kitchen with a modern range of eye and base level units/ peninsular and integrated 1.5 bowl drainage sink as well as space for all white goods. Tiled flooring and vinyl flooring.

Bedroom

Rear and side aspect double glazed windows, carpeted flooring, built in airing cupboard housing emersion heater, wall mounted electric radiator and wall length wardrobe.

Bathroom

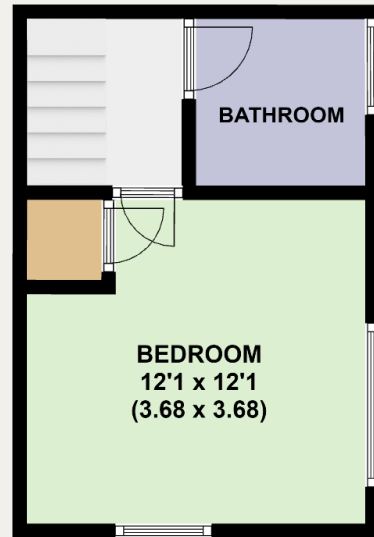
Rear aspect double glazed window with frosted glass, P shaped bath with glass screen and shower attachment, low level WC, pedestal wash basin, heated towel rail and tiled floor/ walls.

Garden

Mostly paved, with planted borders and rear shed. Side gate to driveway.



FLOORPLAN



Feltham

343, Bedfont Lane, Feltham, TW14 9SD

02088937618

info@robertshunt.co.uk