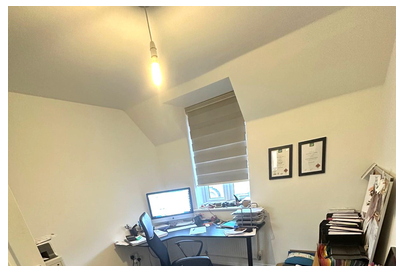
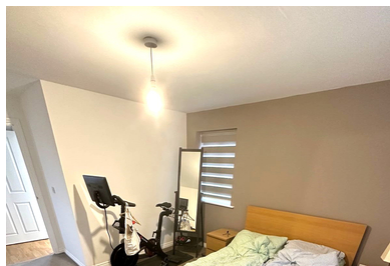
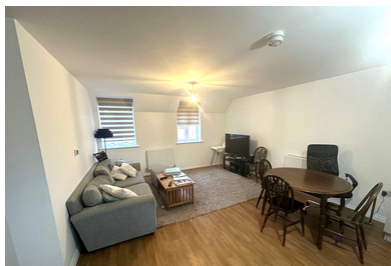


LET



Parade Square, Colchester

£1,100 pcm

- 2 Double Bedrooms
- Modern Bathroom
- Permit parking
- Modern Kitchen with integrated appliances
- Garage

Delightful 2 bedroom coach house with own entrance hall, 2 double bedrooms, open plan kitchen/living room with integral appliances including dishwasher, family bathroom and spacious garage. Double glazed throughout with gas central heating. Easy access to Colchester town centre and railway stations. Available mid March.

