



**Everett Street
Hartlepool
Durham
TS26 0JB**

Offers In Excess Of £55,000

bettermove

Everett Street Hartlepool

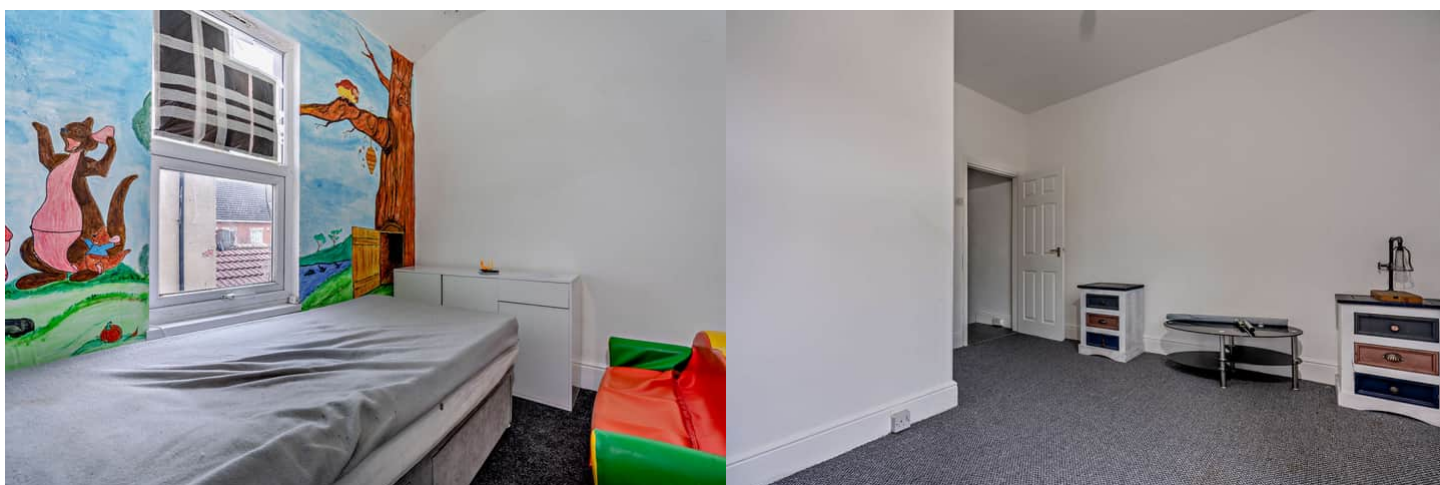
Bettermove are proud to present this 3 bedroom Terraced House in Hartlepool available with no forward chain.

The property benefits from double glazing, gas central heating throughout and has ample on street parking available nearby. The council tax band is A.

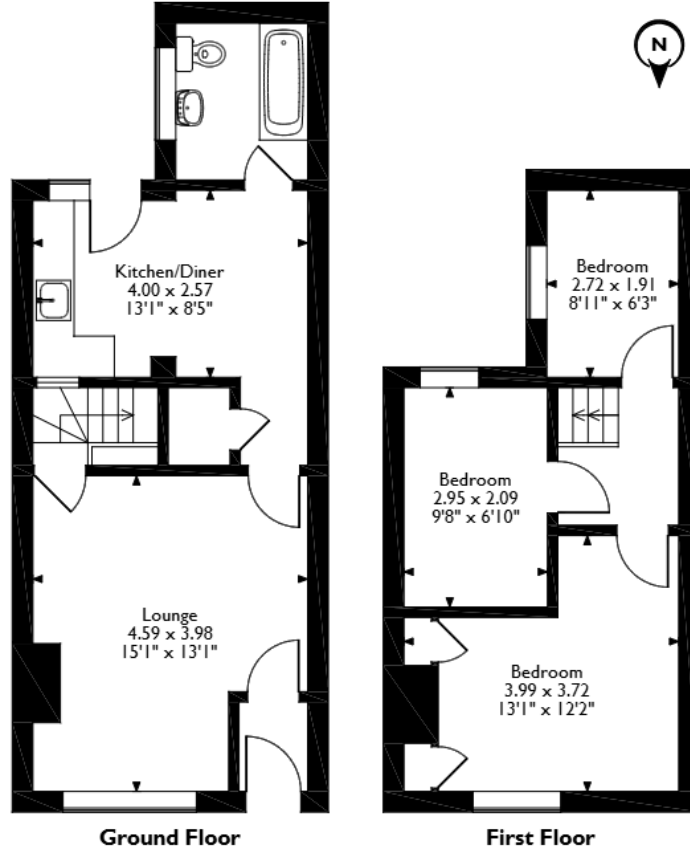
The interior of this property comprises a spacious living room, the fitted kitchen and the family bathroom on the ground floor. The first floor consists of three bedrooms.

Located in the popular town of Hartlepool, the property is close to a range of amenities, including shops, supermarkets, restaurants and pubs. Excellent transport connections can be found from Hartlepool Train Station, the A19 and many local bus routes.

This exciting opportunity should not be missed! All enquiries can be made through Bettermove on 0330 004 0050.



Everett Street, Hartlepool
 Approximate Gross Internal Area
 68 Sq M/732 Sq Ft



Please note that the location of doors, windows and other items are approximate and this floorplan is to be used for illustrative purposes only. Unauthorized reproduction is prohibited.

Energy Efficiency Rating		Current	Potential
<i>Very energy efficient - lower running costs</i>			
(92+)	A		
(81-91)	B		85
(69-80)	C		
(55-68)	D	61	
(39-54)	E		
(21-38)	F		
(1-20)	G		
<i>Not energy efficient - higher running costs</i>			
England, Scotland & Wales		EU Directive 2002/91/EC	



20-22 Bridge End, Leeds, LS1 4DJ
t: 0330 004 0050 e: hello@bettermove.co.uk
www.bettermove.co.uk