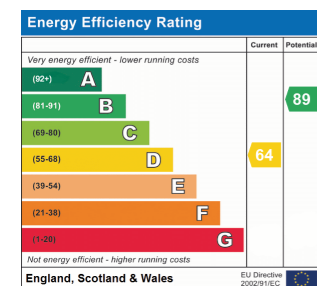




Virginia Way, St Ives PE27 6SQ

£240,000

- Mid Terrace Home
- Two Double Bedrooms
- Good Sized Living Room
- Kitchen/Dining Room
- Front And Rear Gardens
- Allocated Parking
- A Few Minutes Walk To Leisure Centre
- Ideal First Time Purchase
- No Forward Chain



Peter Lane &
PARTNERS
EST 1990

Huntingdon 01480 414800

www.peterlane.co.uk Web office open all day every day

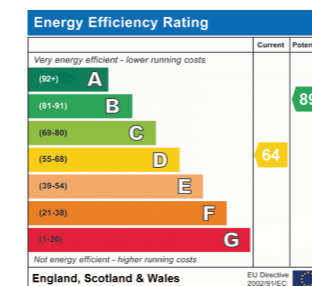
huntingdon@peterlane.co.uk



Virginia Way, St Ives PE27 6SQ

£240,000

- Mid Terrace Home
- Two Double Bedrooms
- Good Sized Living Room
- Kitchen/Dining Room
- Front And Rear Gardens
- Allocated Parking
- A Few Minutes Walk To Leisure Centre
- Ideal First Time Purchase
- No Forward Chain



Peter Lane &
PARTNERS
EST 1990

Huntingdon 01480 414800

www.peterlane.co.uk Web office open all day every day

huntingdon@peterlane.co.uk

UPVC Double Glazed Door To

Entrance Hall

Stairs to first floor, radiator.

Lounge

16' 0" x 11' 9" (4.88m x 3.58m)

Double glazed window and UPVC double glazed door to rear, radiator, laminate flooring, door to

Kitchen/Dinning Room

16' 3" x 13' 1" (4.95m x 3.99m)

Double glazed window to front, fitted in a range of base and wall mounted units, drawer units, complementing work surfaces and tiling, fitted electric oven and hob, space and plumbing for washing machine, space for fridge freezer, understairs storage cupboard, radiator.

First Floor Landing

Cupboard housing central heating boiler.

Bedroom 1

13' 10" x 11' 9" (4.22m x 3.58m)

Double glazed window to rear aspect, two double built in wardrobes, radiator.

Bedroom 2

12' 4" x 9' 7" (3.76m x 2.92m)

Double glazed window to front, double built in wardrobe, radiator.

Family Bathroom

Double glazed window to front aspect, fitted in a three piece suite comprising low level WC, wash hand basin, panel bath with mixer shower over, complementing tiling, radiator, tiled floor.

Outside

The front garden is laid to lawn with hedging, fencing and and pathway. The rear garden is laid to lawn with raised beds, garden shed and enclosed by panel fencing.

Tenure

Freehold

Council Tax Band - C

UPVC Double Glazed Door To

Entrance Hall

Stairs to first floor, radiator.

Lounge

16' 0" x 11' 9" (4.88m x 3.58m)

Double glazed window and UPVC double glazed door to rear, radiator, laminate flooring, door to

Kitchen/Dinning Room

16' 3" x 13' 1" (4.95m x 3.99m)

Double glazed window to front, fitted in a range of base and wall mounted units, drawer units, complementing work surfaces and tiling, fitted electric oven and hob, space and plumbing for washing machine, space for fridge freezer, understairs storage cupboard, radiator.

First Floor Landing

Cupboard housing central heating boiler.

Bedroom 1

13' 10" x 11' 9" (4.22m x 3.58m)

Double glazed window to rear aspect, two double built in wardrobes, radiator.

Bedroom 2

12' 4" x 9' 7" (3.76m x 2.92m)

Double glazed window to front, double built in wardrobe, radiator.

Family Bathroom

Double glazed window to front aspect, fitted in a three piece suite comprising low level WC, wash hand basin, panel bath with mixer shower over, complementing tiling, radiator, tiled floor.

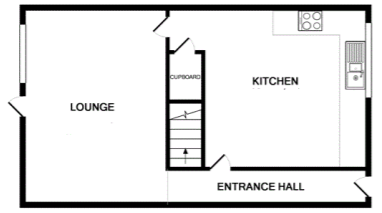
Outside

The front garden is laid to lawn with hedging, fencing and and pathway. The rear garden is laid to lawn with raised beds, garden shed and enclosed by panel fencing.

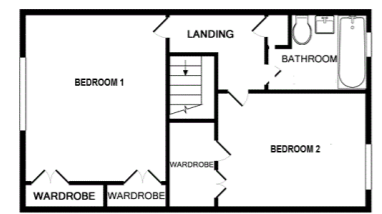
Tenure

Freehold

Council Tax Band - C

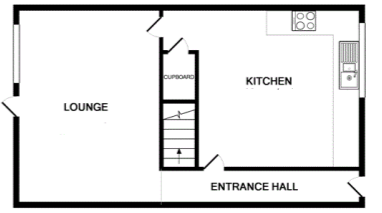


GROUND FLOOR APPROX. FLOOR AREA 448 SQ.FT. (41.6 SQ.M.)

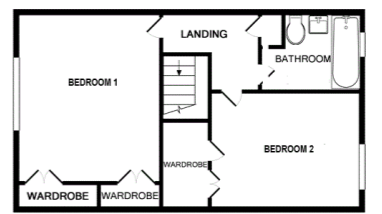


1ST FLOOR APPROX. FLOOR AREA 448 SQ.FT. (41.6 SQ.M.)

TOTAL APPROX. FLOOR AREA 896 SQ.FT. (83.2 SQ.M.) Whilst every attempt has been made to ensure the accuracy of the floor plan contained here, measurements of doors, windows, rooms and any other items are approximate and no responsibility is taken for any error, omission, or mis-statement. This plan is for illustrative purposes only and should be used as such by any prospective purchaser. The services, systems and appliances shown have not been tested and no guarantee as to their operability or efficiency can be given. Made with Metropix i2016.



GROUND FLOOR APPROX. FLOOR AREA 448 SQ.FT. (41.6 SQ.M.)



1ST FLOOR APPROX. FLOOR AREA 448 SQ.FT. (41.6 SQ.M.)

TOTAL APPROX. FLOOR AREA 896 SQ.FT. (83.2 SQ.M.) Whilst every attempt has been made to ensure the accuracy of the floor plan contained here, measurements of doors, windows, rooms and any other items are approximate and no responsibility is taken for any error, omission, or mis-statement. This plan is for illustrative purposes only and should be used as such by any prospective purchaser. The services, systems and appliances shown have not been tested and no guarantee as to their operability or efficiency can be given. Made with Metropix i2016.

| | | | |
|---|---|--|---|
| Huntingdon 60 High Street Huntingdon 01480 414800 | Kimbolton 24 High Street Kimbolton 01480 860400 | St Neots 32 Market Square St. Neots 01480 406400 | Mayfair Office Cashel House 15 Thayer St, London 0870 1127099 |
|---|---|--|---|

Peter Lane & Partners, for themselves as agents for the Vendors or Lessors of this property give notice that these particulars are produced in good faith and are to act purely as a guide to the property and therefore do not constitute any part of any contract. Peter Lane & Partners or any employee therefore do not have the authority to make or give any warranties, guarantees or representation whatsoever in relation to this property.

| | | | |
|---|---|--|---|
| Huntingdon 60 High Street Huntingdon 01480 414800 | Kimbolton 24 High Street Kimbolton 01480 860400 | St Neots 32 Market Square St. Neots 01480 406400 | Mayfair Office Cashel House 15 Thayer St, London 0870 1127099 |
|---|---|--|---|

Peter Lane & Partners, for themselves as agents for the Vendors or Lessors of this property give notice that these particulars are produced in good faith and are to act purely as a guide to the property and therefore do not constitute any part of any contract. Peter Lane & Partners or any employee therefore do not have the authority to make or give any warranties, guarantees or representation whatsoever in relation to this property.