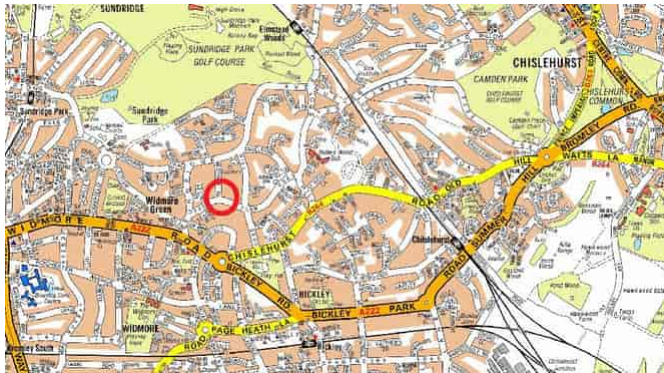




Tenure: Freehold

4 Bedrooms | 2 Reception Rooms | 2 Bathrooms

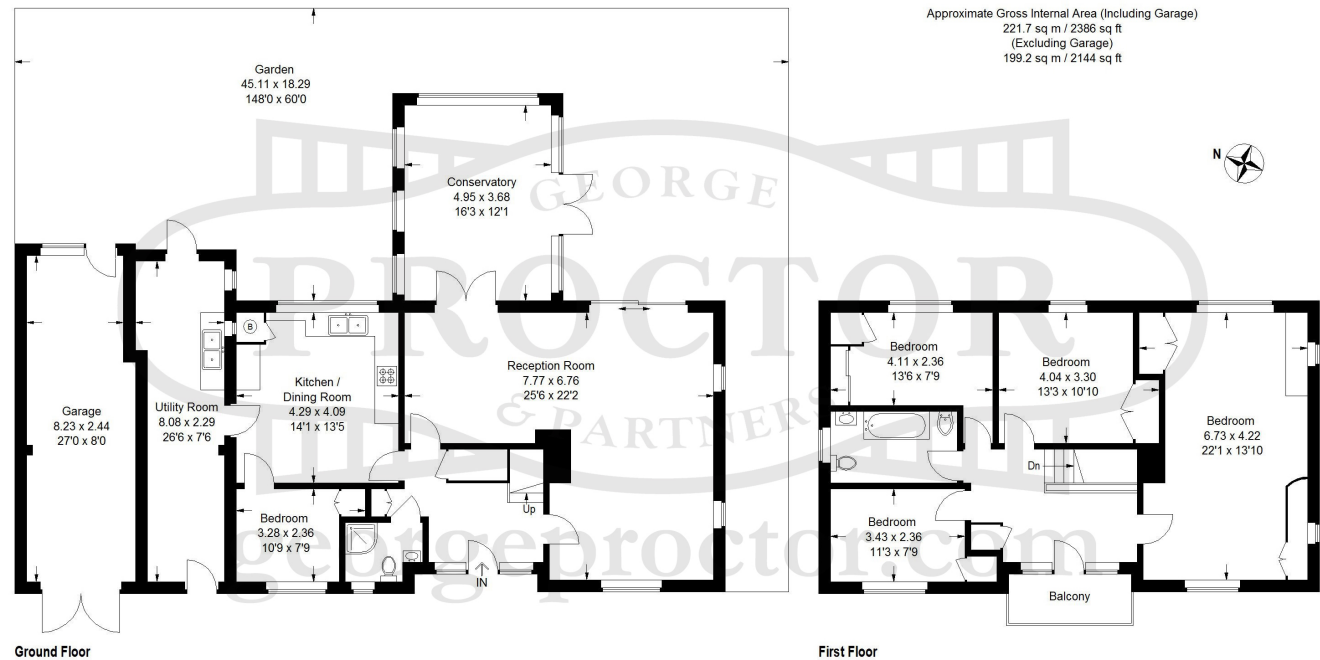


Set in this highly desirable unadopted residential road is this 1950s built and subsequently extended four bedroomed detached family home of some 2386 sq. ft, set on a generous plot with a rear garden approaching 148 ft deep with a width approaching 60ft. Offering an excellent opportunity for further enlargement or replacement, subject to the usual consents, we highly advise an internal inspection and invite offers by informal tender by close of business on Monday 20th April. EXCLUSIVE TO GEORGE PROTOR & PARTNERS. EPC Rating: D

Enquiries To:

T: 020 8467 2252

E: beosales@georgeproctor.com



These particulars whilst believed to be accurate are made without responsibility on the part of the vendor or agents, their accuracy is not guaranteed nor do they form part of any contract and no warranty is given. Services or appliances have not been tested and no guarantee can be given as to their operation, buyers should seek professional advice where necessary. All measurements are approximate and may be rounded to the nearest three inches (10 cm). Floor plans, where shown, are indicative only. Any photographs included may be taken with the use of a wide angle lens. If there is a matter of particular interest please contact us for further information, especially before travelling any distance to view. Map reproduced by permission of Geographers A-Z Map Co Ltd. Licence No. A0514. This map is based upon Ordnance Survey maps with the permission of the controller of Her Majesty's Stationary Office.

The Bickley Estate Office

Southborough Road, Bickley, Kent, BR1 2EB