



## 1 Flude Way, Northstowe, Cambs, CB24 1DG

### Offers Over £535,000 Freehold

- Large open plan kitchen diner
- 5 excellent sized bedrooms
- Bifold Doors from diner to garden
- Contemporary and modern home
- 3 bath / shower rooms
- Top floor separate bathroom and two bedrooms
- Spacious & Versatile Accommodation
- Two parking spaces with garage
- Utility room with additional storage
- Bright light home with large windows
- EPC Rating

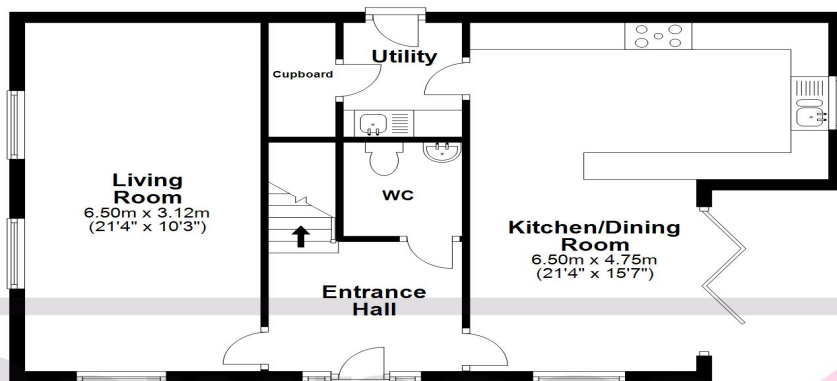




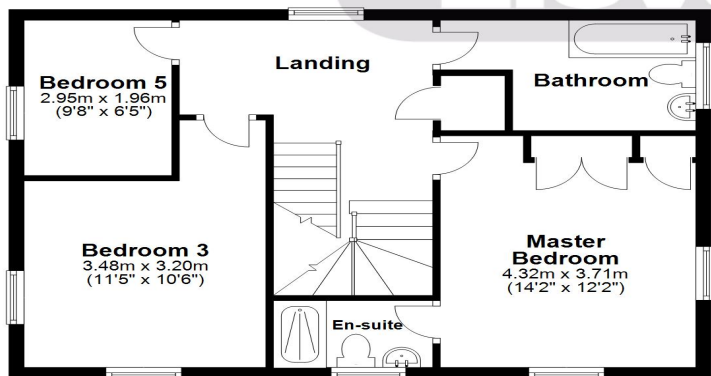
## Disclaimer

Whilst we have endeavoured to prepare our sales particulars accurately none of the services, appliances or equipment have been tested. A buyer should satisfy themselves on such matters prior to purchase. Any measurements or distances mentioned in these particulars are for guide reference only. If such particulars are fundamental to a purchase, buyers should rely on their own enquiries. All enquiries should be directed to Elevation Estate Agents in the first instance.

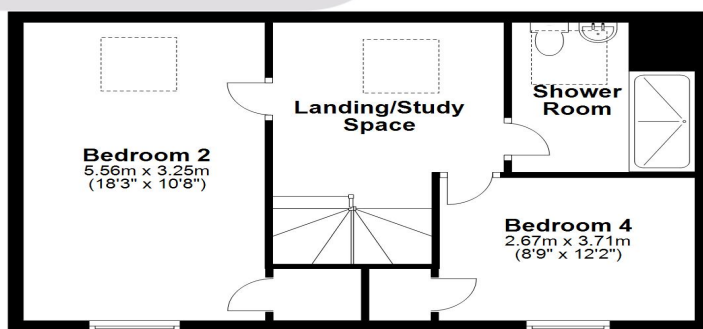
## Ground Floor



## First Floor



## Second Floor



This floor plan along with the dimensions are for guidance only and should not be used for carpet sizes, appliances or items of furniture. Plan produced using PlanUp  
Plan produced using PlanUp.