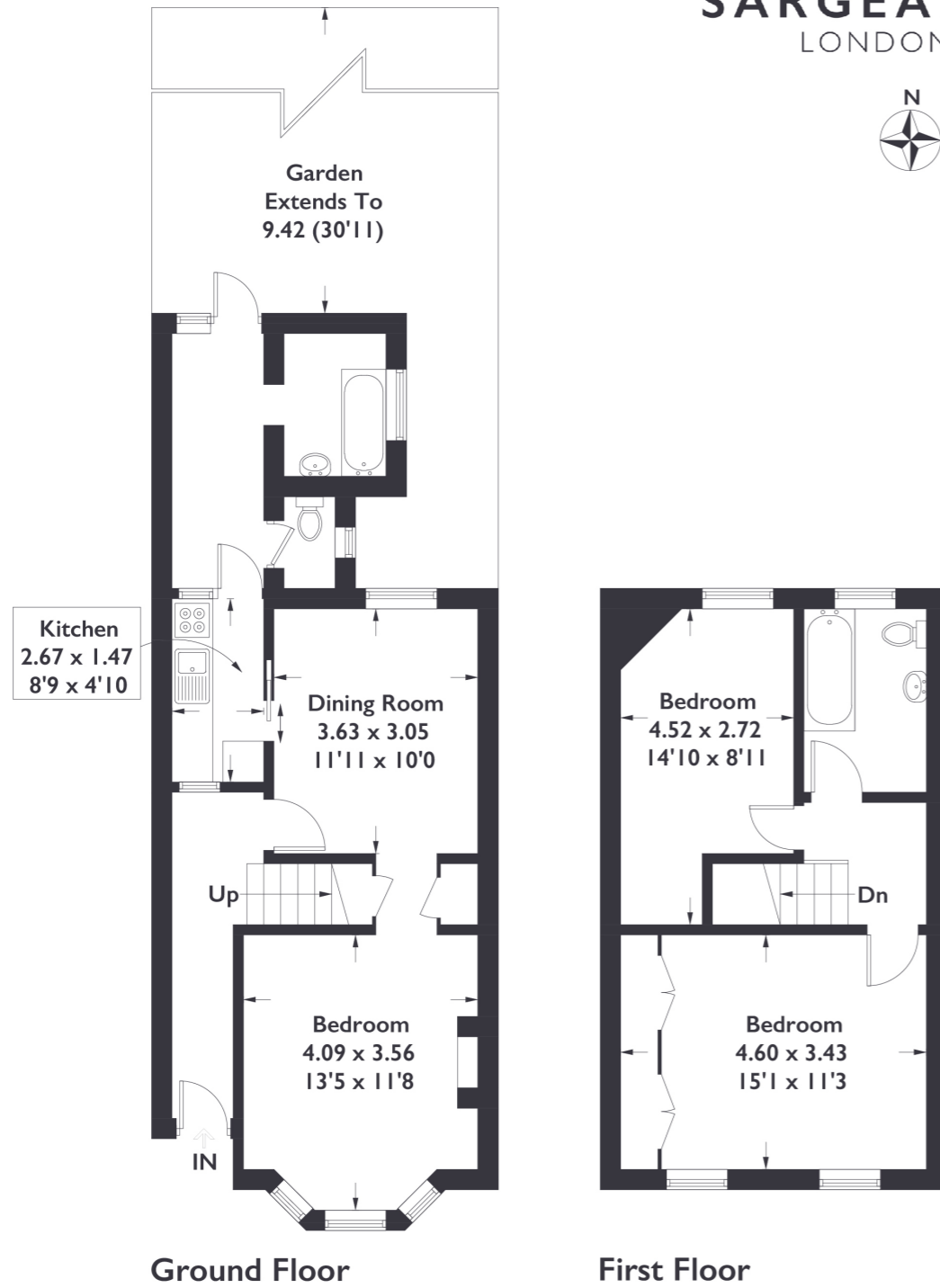


Hessel Road, W13

Approximate Gross Internal Area = 88.8 sq m / 956 sq ft



Measured in accordance with RICS Code of Measuring Practice. To be used for identification and guidance purposes only. Whilst every care is taken in the preparation of this plan, please check all dimensions, shapes and compass bearings before making any decisions reliant upon them.



2 BEDROOM HOUSE

Hessel Road, W13

£700,000

This Edwardian house is primed for a family to make it their own.

The history of this period home is reflected throughout the house with two receptions high ceilings and generously proportioned rooms. In need of updating, it could be the perfect family home.

FEATURES

- Chain Free
- Two Bathrooms
- Close to Walpole & Lammas Parks
- Potential to Extend (STPC')
- Period Features
- Close to Fielding Primary School



2 BEDROOM HOUSE

Hessel Road, W13

Hessel Road in Northfields is a charming and picturesque street that exudes a sense of tranquility and beauty.

Fielding Primary School which is moments away, is a gem within the community, known for its exceptional education and nurturing environment. Hessel Road boasts exceptional transport links, including convenient proximity to Heathrow Airport and Crossrail, ensuring effortless travel connections for residents to both international destinations and various parts of London.

