



Bromley High Street, London, E3 3EL

Cow & Co
LONDON



GUIDE PRICE OF £250,000-350,000. Situated moments from Bow and within easy reach of the City, this spacious one bedroom apartment offers well proportioned living space and views of Canary Wharf.

Bromley High Street provides a convenient location in proximity to trendy shops, bars and cafes of Mile End and Bow with the green open spaces of Victoria Park found within easy reach.

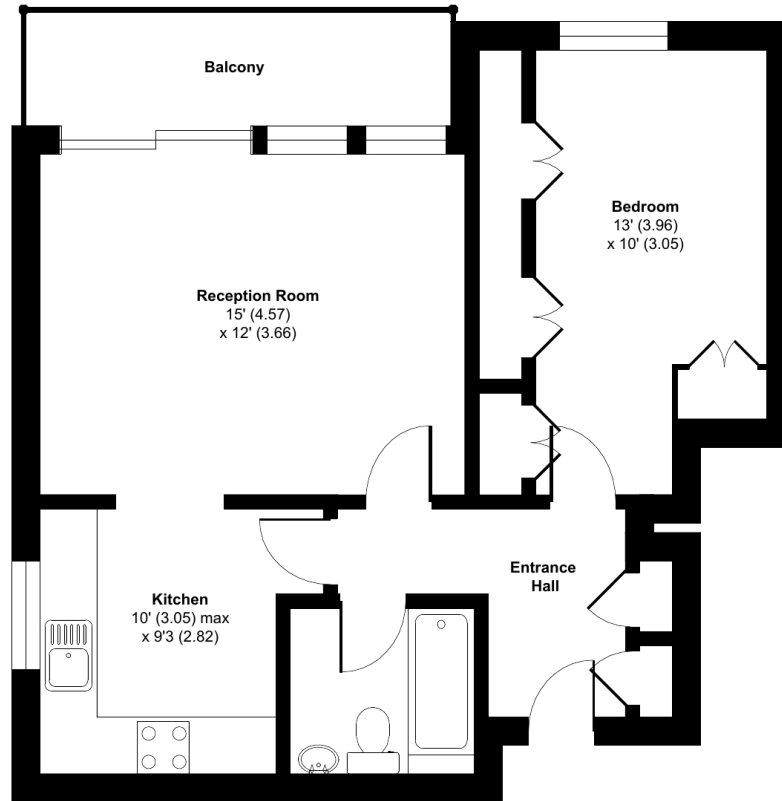


- One bedroom apartment
- Views Towards Canary Wharf
- Well presented throughout
- Fitted open plan kitchen
- Balcony & roof terrace
- Close proximity to local transport links and amenities

Bromley High Street, London, E3

Approximate Area = 538 sq ft / 50 sq m

For identification only - Not to scale



SIXTH FLOOR



Floor plan produced in accordance with RICS Property Measurement Standards incorporating International Property Measurement Standards (IPMS2 Residential). © nchecon 2022. Produced for Cow & Co Properties Ltd. REF: 838006

Tel: 0208 065 0010
Email: thehub@cowandco-london.com
Web: cowandco-london.com

Agents note: All measurements are approximate and whilst every attempt has been made to ensure accuracy they are for general guidance only and must not be relied on. The fixture and fittings referred to have not been tested and therefore no guarantee can be given that they are in working order. Internal photographs are reproduced for general information and it must not be inferred that any item shown is included with the property.

Cow & Co
LONDON