

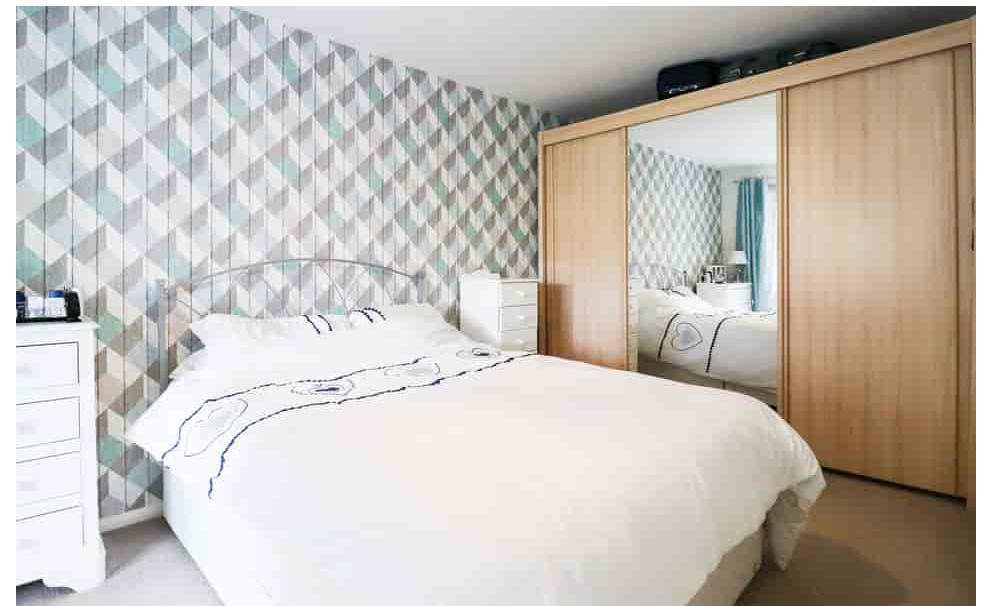


THE ESTATE AGENTS  
1977





**Hollingside Drive, Northampton NN2 7NN**  
**Offers Over £250,000 - Freehold**



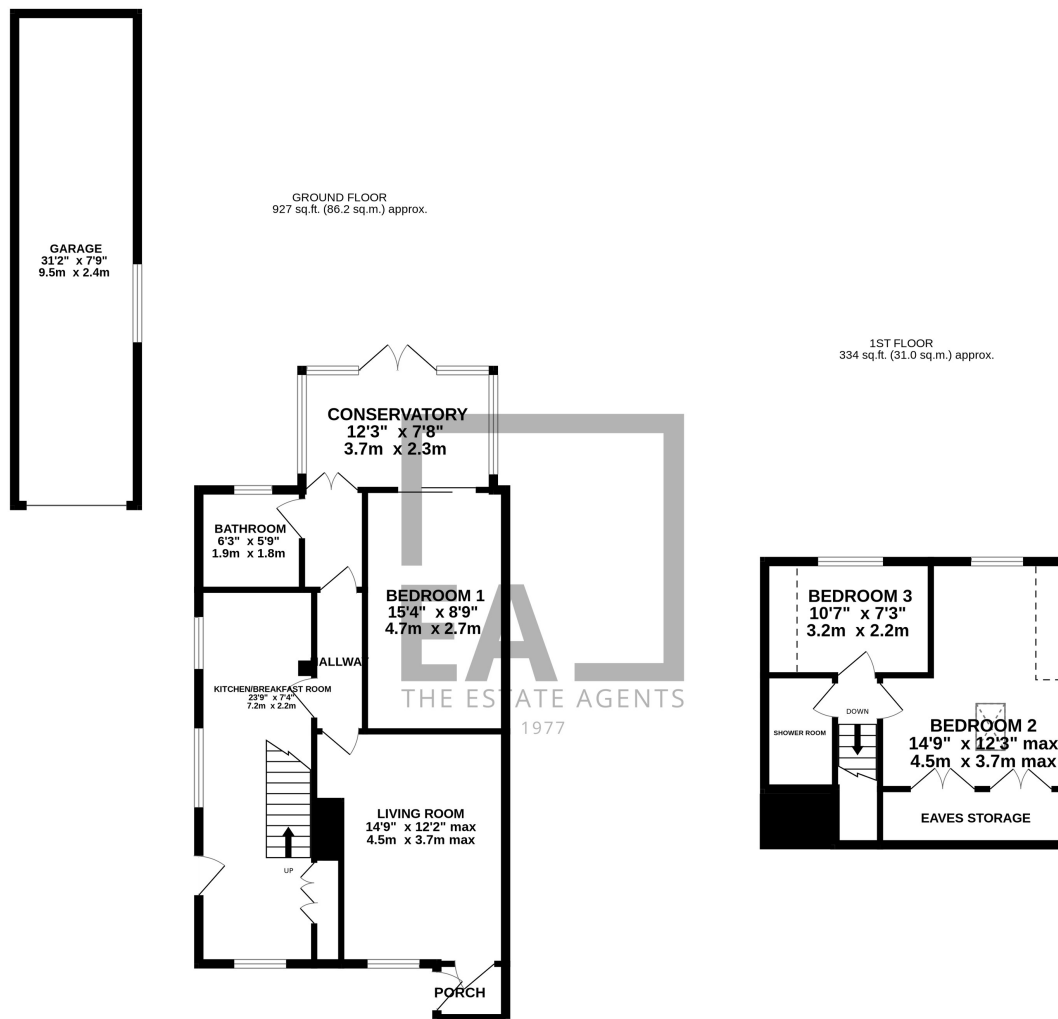
## PROPERTY DESCRIPTION

The Estate Agents are excited to present this lovely 3 bedroom, dormer bungalow in the sought after area of Links View. The versatile accommodation briefly comprises; entrance porch, living room, large kitchen/breakfast room with utility area, bedroom or formal dining room, conservatory and bathroom. On the first floor are two bedrooms and shower room. Outside the property has a low maintenance front garden with ample off road parking and a generous rear garden with patio and lawned areas. The property also benefits from a large tandem garage with electric shutters.

Links view is a sought after area close to Kingsthorpe Golf course, local amenities, major supermarket, doctors surgery, pharmacy and schools.

## POINTS OF INTEREST

- Three Bedrooms
- Bathroom And Shower Room
- Conservatory
- Ample Of Road Parking
- Tandem Garage
- Sought After Location
- Close To Kingsthorpe Golf Course
- No Upward Chain



TOTAL FLOOR AREA : 1261 sq.ft. (117.2 sq.m.) approx.

Whilst every attempt has been made to ensure the accuracy of the floorplan contained here, measurements of doors, windows, rooms and any other items are approximate and no responsibility is taken for any error, omission or mis-statement. This plan is for illustrative purposes only and should be used as such by any prospective purchaser. The services, systems and appliances shown have not been tested and no guarantee as to their operability or efficiency can be given.  
Made with Metropix ©2025