

DUDDEN HILL LANE, LONDON, NW10 1AU



EPC Rating: C

Presenting for sale a collection of four newly constructed beautifully presented flats in a detached building and located close to the junction of Dudden Hill Lane with Clifford Way.

Jubilee Line Tube Stations at Neasden and Dollis Hill Lane are within half a mile and 1 mile radius respectively and local shops can be found within a few hundred yards from the building at Neasden Shopping Centre.

The property is offered for sale freehold

PRICE: £375,000.....FREEHOLD

DUDDEN HILL LANE, LONDON, NW10 1AU (CONTINUED)

The accommodation is arranged as follows:

Ground Floor Flat (rear):

Comprising of three bedrooms, bathroom and a large open plan lounge/kitchen.

The property has the benefit of an exclusive rear garden and off street parking (accessed from Clifford Way)

Ground Floor Flat (front):

Having its own street access from Dudden Hill Lane.

Comprising double bedroom, bathroom, large living room open plan with kitchen.

First Floor Flat:

Comprising of a spacious lounge/open plan kitchen, two bedrooms, bathroom/WC.

Split Level First/Second Floor Duplex Apartment:

Comprising:

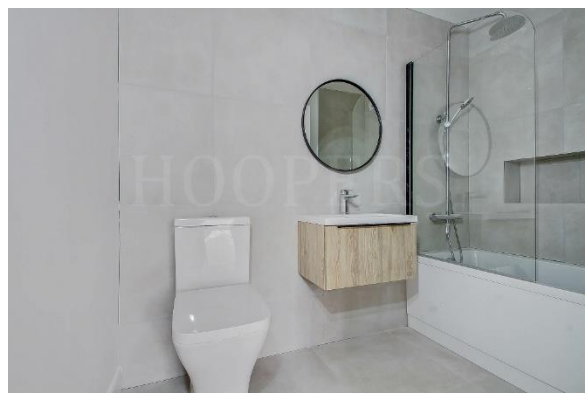
First Floor: Guest cloakroom and large reception room, open plan kitchen.

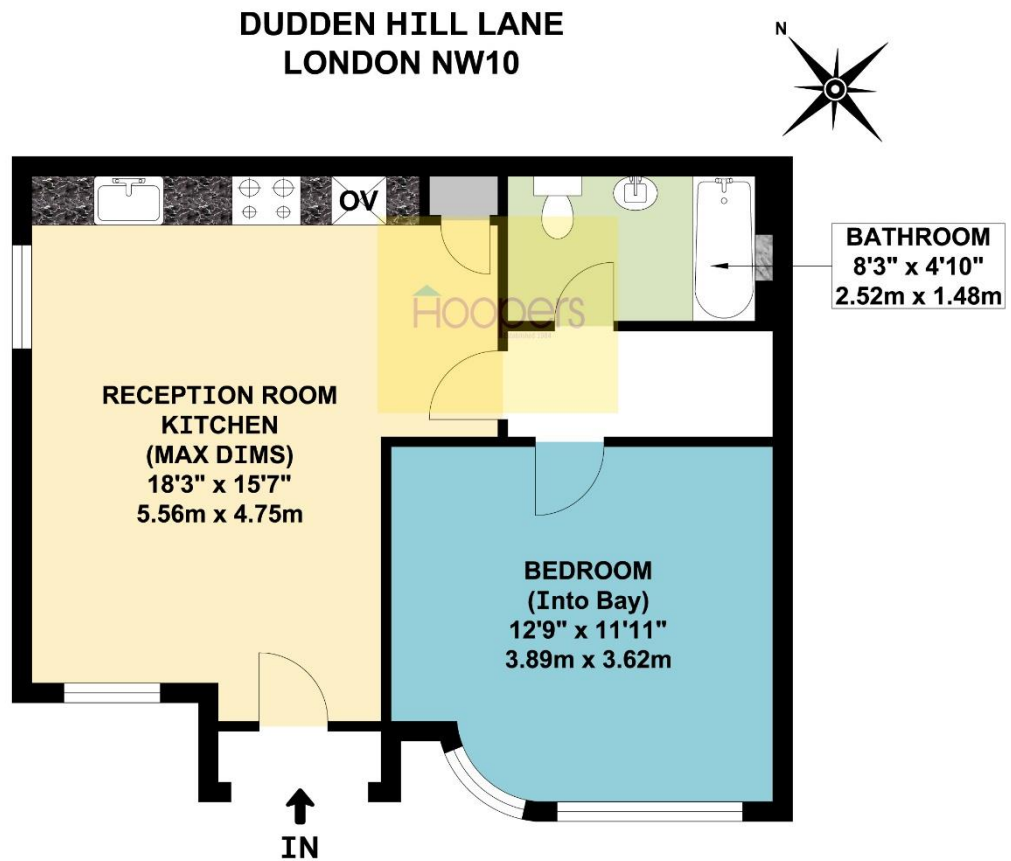
Second Floor: Two bedrooms and a bathroom

PRICE: £375,000 FREEHOLD

VIEWING BY APPOINTMENT ONLY THROUGH OWNERS AGENTS, HOOPERS, AS ABOVE.

If there is anything in our particulars of which you are uncertain, please contact us for clarification and particularly do so if you are contemplating travelling a long distance to view a property. All measurements are approximate and as rooms are measured with a sonic tape measure, accuracy cannot be guaranteed. We have not checked the operational condition of the services connected/wiring/appliances at the property and as such offer no warranties thereto. All distances mentioned to and from local amenities are approximate and based on particular routes.

DUDDEN HILL LANE, LONDON, NW10 1AU (CONTINUED)

DUDDEN HILL LANE, LONDON, NW10 1AU (CONTINUED)**GROUND FLOOR FLAT**

APPROX. GROSS INTERNAL FLOOR AREA 482.97 SQ. FT / 44.87 SQ. M

WHILST EVERY ATTEMPT HAS BEEN MADE TO ENSURE THE ACCURACY OF THE FLOOR PLAN CONTAINED HERE, MEASUREMENTS OF DOORS, WINDOWS, ROOMS AND ANY OTHER ITEMS ARE APPROXIMATE AND NO RESPONSIBILITY IS TAKEN FOR ANY ERROR, OMISSION, OR MIS-STATEMENT. THIS PLAN IS FOR ILLUSTRATIVE PURPOSES ONLY AND SHOULD BE USED AS SUCH, BY ANY PROSPECTIVE PURCHASER.
FLOOR PLANS ARE NOT DONE TO "SCALE".