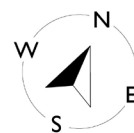
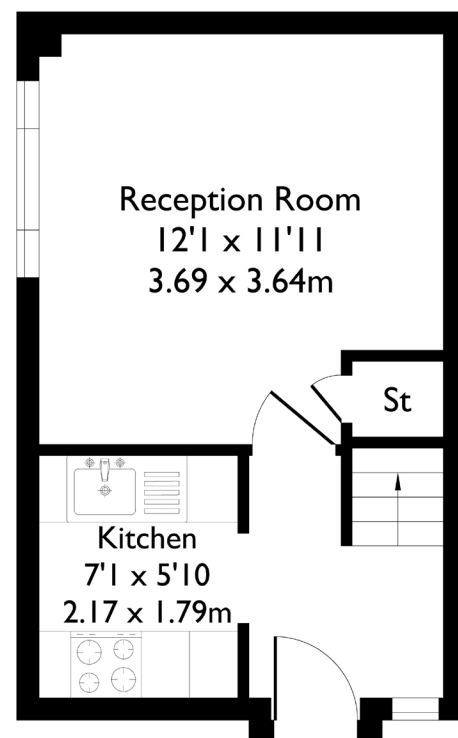


Clementine Close, London, W13

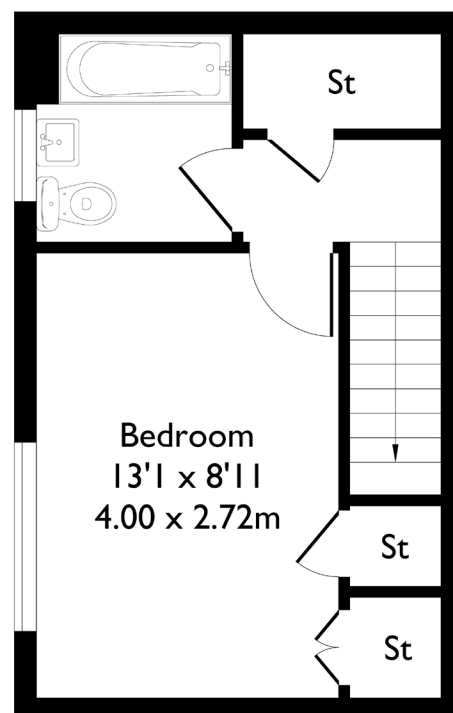
Approximate Floor Area = 43.6 sq m / 470 sq ft



Garden
21'0 x 9'7
6.41 x 2.92m



Ground Floor



First Floor



1 BEDROOM HOUSE

Clementine Close, W13

£425,000

Welcome to this one-bedroom, one-bathroom home nestled in the heart of Northfields.

As you enter, you're greeted by a bright and well-appointed kitchen to your left, with an inviting living area straight ahead — perfect for relaxing or entertaining. Upstairs, you'll find a spacious double bedroom and a modern family bathroom.

FEATURES

- One Bedrooms
- One Bathroom
- One Allocated Parking Space
- Private Garden
- Northfield Avenue Amenities
- Northfields Station (Piccadilly Line)
- Fielding Primary School Catchment
- EPC Rating C

1 BEDROOM HOUSE

Clementine Close, W13

£425,000

The property benefits from allocated parking, a private garden and is in an excellent location close to Northfields Station and local amenities.

It also falls within the sought-after catchment area for Fielding Primary School. This lovely home is turn-key and ready for you to move straight in.

EPC Rating C.

