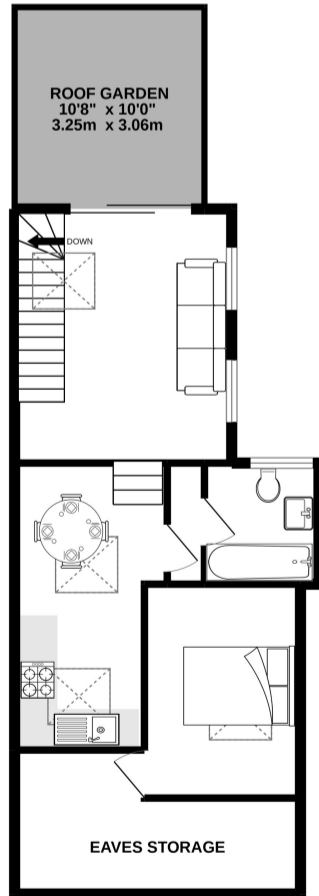
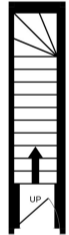


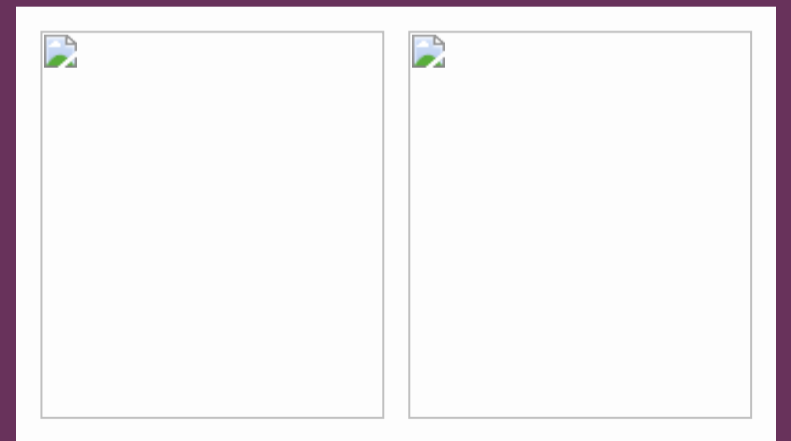


02012008
20 x 12 (2316mm x 1486mm)

02012009
95 sq ft (8754mm x 1111mm) approx.

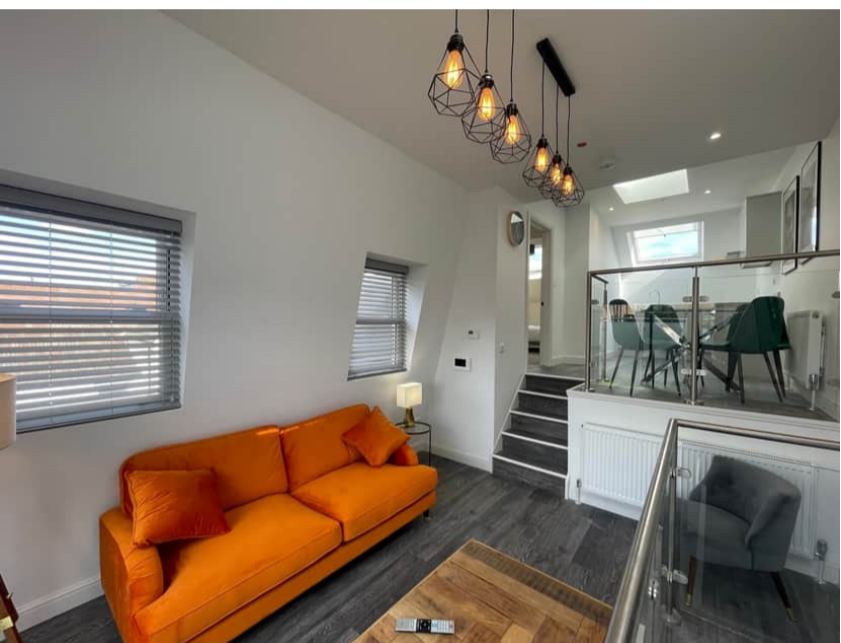


TOTAL FLOOR AREA : 533 sq.ft. (49.5 sq.m.) approx.
Whilst every attempt has been made to ensure the accuracy of the floorplan contained here, measurements of doors, windows, rooms and any other items are approximate and no responsibility is taken for any error, omission or mis-statement. This plan is for illustrative purposes only and should be used as such by any prospective purchaser. The services, systems and appliances shown have not been tested and no guarantee as to their operability or efficiency can be given.
Made with Kaledra 200975





This property has been finished to a very high standard throughout. It comprises, large bedroom, modern bathroom, a bright fully integrated modern kitchen, open plan reception opening on to a private suntrap terrace. It would make a lovely home for a couple or individual or a great rental investment. Located on a quiet residential street yet still in the very heart of the thriving Tooting scene, this period flat is only a 2 minute walk from Tooting Broadway Tube Station (Northern Line) and the same from the large supermarket. Early viewings are highly recommended. New long lease. Call today to arrange a viewing.



- Prime location
- Private Roof Terrace
- Open Plan Reception Room
- New lease

- Period One Bedroom Flat
- Modern Open Plan Kitchen with Dining Area
- Only 2mins from Tooting Broadway Tube Station
- Call Now on 0207 101 1636 To Arrange A Viewing



Bickley Street

Tooting Broadway, SW17 9NE

Absolute Living are delighted to bring to the market this spacious and bright one bedroom flat on the upper floors of this period property on a prime road close to Tooting Broadway with a private roof terrace.

