

Havenleigh House,

Frome, BA11 1RX

COOPER
AND
TANNER



£330,000 Freehold

Havenleigh House is a well maintained three-bedroom terraced home on Garsdale, Frome, featuring an attractive stone-dressed frontage, a spacious living and dining area, and a separate kitchen with garden access. Walking distance to both the town's centre and train station, with off street parking and garage.

Havenleigh House, Frome, BA11 1RX

 3  1  1 EPC E

£330,000 Freehold

DESCRIPTION

Set back from the road along a pedestrian pathway, this attractive three-bedroom terraced home offers a peaceful setting with a welcoming stone-dressed frontage and a well-maintained front lawn with mature shrubs.

Stepping inside, a small entrance hall leads to a convenient downstairs WC. The spacious living room, positioned at the front, flows seamlessly into the dining room, creating an ideal space for entertaining. Additional under-stairs storage adds practicality.

The separate kitchen, with a range of wall and base units, enjoys garden views and direct access to the fully enclosed rear garden.

Upstairs, the property boasts three well-proportioned bedrooms, with the two largest benefitting from built-in storage. The landing houses an airing cupboard, and the family bathroom includes a bathtub. While the home is in good order, there is potential for cosmetic updating to suit personal tastes. Conveniently located in a sought-after area of Frome, walking distance to both the town centre and train station, this property presents a fantastic

opportunity for families, first-time buyers, or investors alike.

OUTSIDE

The low-maintenance garden features a combination of patio, raised beds, a gravel section, and a detached single stone-clad garage at the rear, alongside an off-street parking space.

ADDITIONAL INFORMATION

Mains gas central heating. All mains services are connected.

LOCATION

Frome is a historic market town with many notable buildings and features the highest number of listed buildings in Somerset. Frome offers a range of shopping facilities, a sports centre, several cafés, a choice of pubs, local junior, middle and senior schools, several theatres, and a cinema. Bath and Bristol are within commuting distance, and the local railway station connects at Westbury for London Paddington.





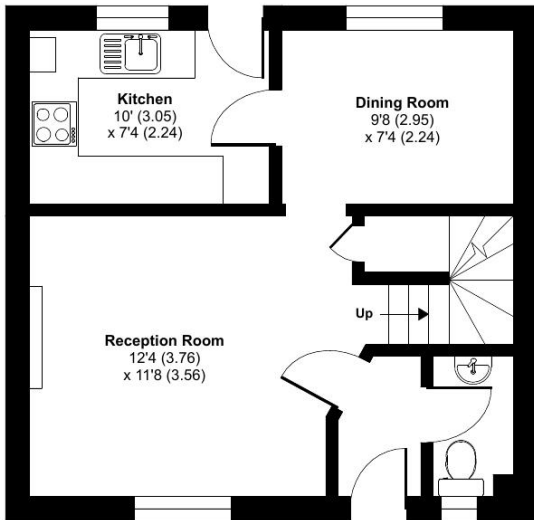
Havenleigh House, Garsdale, Frome, BA11

Approximate Area = 778 sq ft / 72.3 sq m

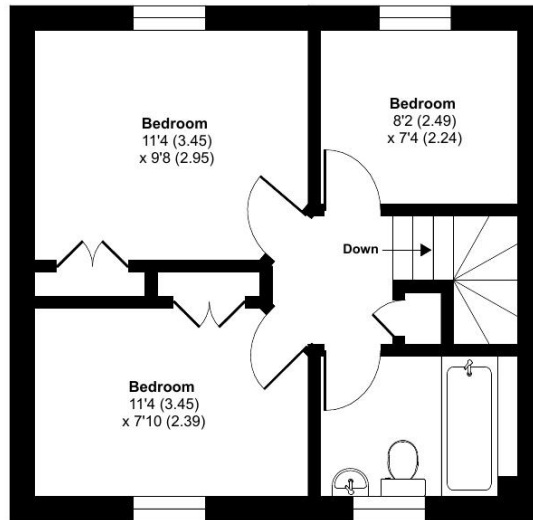
Garage = 116 sq ft / 10.8 sq m

Total = 894 sq ft / 83.1 sq m

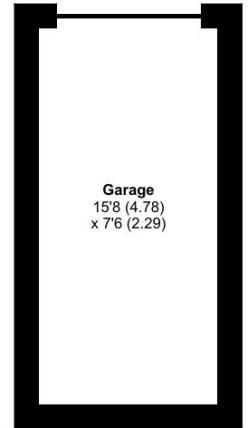
For identification only - Not to scale



GROUND FLOOR



FIRST FLOOR



Floor plan produced in accordance with RICS Property Measurement 2nd Edition, Incorporating International Property Measurement Standards (IPMS2 Residential). © ntechcom 2025. Produced for Cooper and Tanner. REF: 1267963



FROME OFFICE

Telephone 01373 455060

6 The Bridge, Frome, Somerset, BA11 1AR

frome@cooperandtanner.co.uk

**COOPER
AND
TANNER**

Important Notice: These particulars are set out as a general outline only for the guidance of intended purchasers and do not constitute, nor constitute part of, an offer or contract. All descriptions, dimensions, reference to condition and necessary permissions for use and occupation, warranties and other details are given without responsibility and any intending purchasers should not rely on them as statements or representations of fact but must satisfy themselves by inspection or otherwise as to the correctness of each of them.

