



Barn Close, Denchworth OX12 0EZ
Oxfordshire, £250,000

Waymark

Barn Close, Wantage OX12 0EZ

Oxfordshire

Freehold

Quiet village location | No onward chain | Backing onto open countryside at the rear | Requiring a degree of modernisation | 2 bedrooms | Good size rear garden

Description

Positioned in a quiet corner of this cul-de-sac in the popular village of Denchworth, is this 2 bedroom bungalow. The property does require some modernisation throughout, but provides an exciting opportunity for a purchaser to create their own home.

Internally the property provides an entrance hall, kitchen/dining room, two bedrooms, a bathroom, sitting room with a door out to the rear garden and a large store room. Externally the property has a garden area to the front which wraps around the side, opening out to a rear garden, laid mainly to lawn, which backs on to open fields beyond.

The property is freehold and we understand is connected to mains water, electricity and sewerage. The property is heated via wall mounted electric heaters and is available to

purchase with no onward chain.

Location

Denchworth is a small village, located approximately 2.5 miles north of the market town of Wantage, nestling in stunning countryside. The quiet village has a parish church and The Fox public house, with more comprehensive local facilities found in nearby Grove, which is approximately 1 mile away with further educational, health, leisure and retail facilities available in Wantage.

Viewing Information

Viewings by appointment only please.



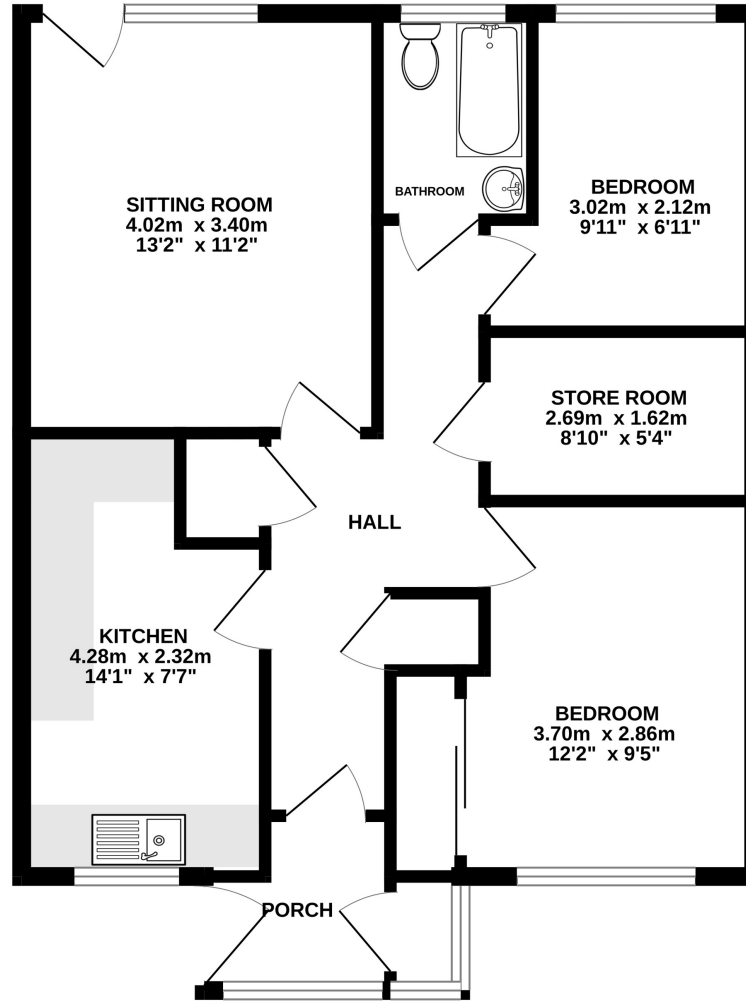
Waymark
Wantage Office

T: 01235 645645

E: wantage@waymarkproperty.co.uk

Energy Efficiency Rating		Current	Potential
Very energy efficient - lower running costs			
(92+)	A		
(81-91)	B		85
(69-80)	C		
(55-68)	D		
(39-54)	E	48	
(21-38)	F		
(1-20)	G		
Not energy efficient - higher running costs			
England, Scotland & Wales			
EU Directive 2002/91/EC			

GROUND FLOOR
64.3 sq.m. (692 sq.ft.) approx.



1 BARN CLOSE DENCHWORTH OX12 0EZ

TOTAL FLOOR AREA : 64.3 sq.m. (692 sq.ft.) approx.

Measurements are approximate. Illustrative purposes only. Creator of plan Alpha EPC.
Made with Metropix ©2024

Important Notice: These Particulars have been prepared for prospective purchasers for guidance only. They do not form part of an offer or contract. Whilst some descriptions are obviously subjective and information is given in good faith, they should not be relied upon as statements or representative of fact.

