



Tel: 01242 676767

www.cotswoldestateagents.co.uk

41a Church Road, Bishops Cleeve, Cheltenham, GL52 8LP

18, Belworth Court, Belworth Drive
GL51 6HQ

£179,950



FOR SALE

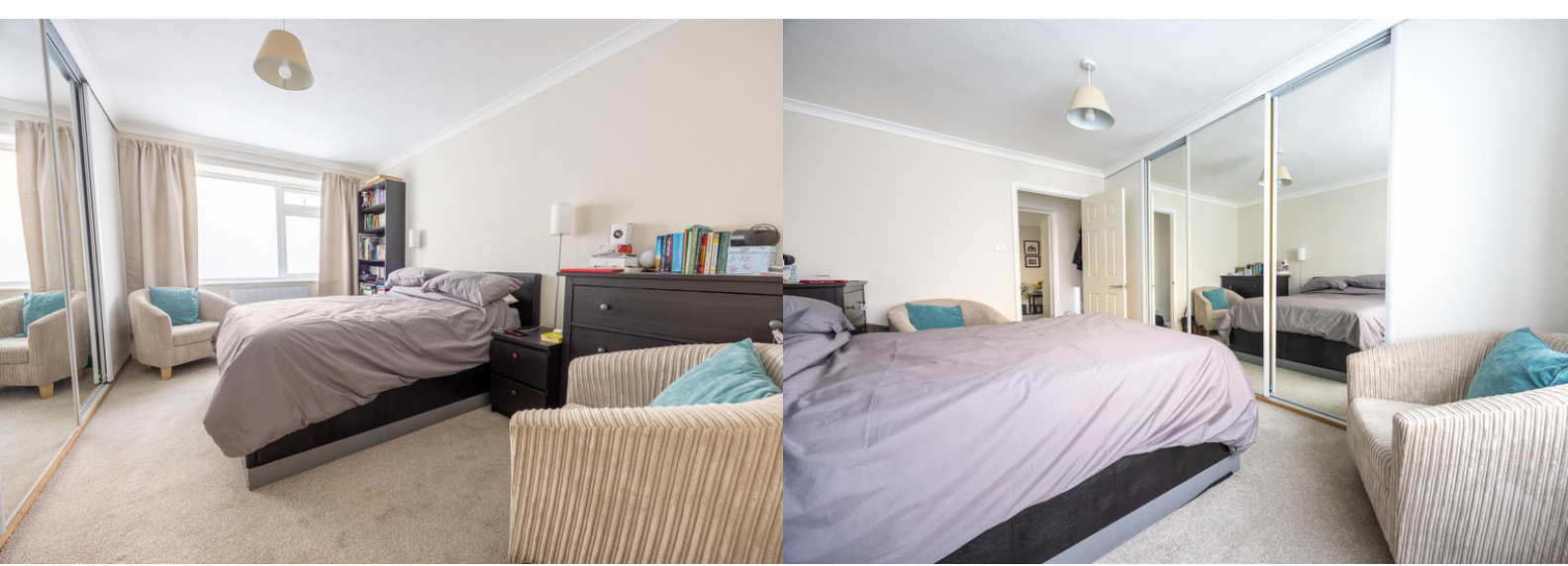
Set in a highly sought after area is this substantial superbly presented one bedroom ground floor apartment. The property has been extensively modernised and offers spacious living accommodation featuring entrance hall, large lounge/diner with balcony, modern fitted kitchen with integrated appliances , bathroom/shower room and a generous double bedroom with built-in triple wardrobe. * PROMPT VIEWING IS RECOMMENDED *

Communal entrance hall with security intercom system to apartment and post box. Entrance hall: LED downlighting with doors to lounge/dining room, kitchen, bathroom and double bedroom. Lounge/dining room: sliding double glazed door to balcony with views over communal gardens, wall mounted contemporary electric flame effect fire, modern style electric radiator and door to kitchen. Kitchen: window with views over communal gardens, modern fitted kitchen comprising a matching range of eye and base level storage units, built-in fan assisted oven, induction hob, space and plumbing for washing machine, appliance space, ceramic tiled flooring and built-in cupboard. Bathroom: window to side aspect, modern white suite comprising bath with electric shower unit, wash hand basin, WC and built-in airing cupboard with hot water cylinder and linen shelves. Bedroom one: window to side aspect, large built-in triple wardrobe and modern electric radiator.

Exterior: communal gardens being mainly laid to lawn. Bin storage area

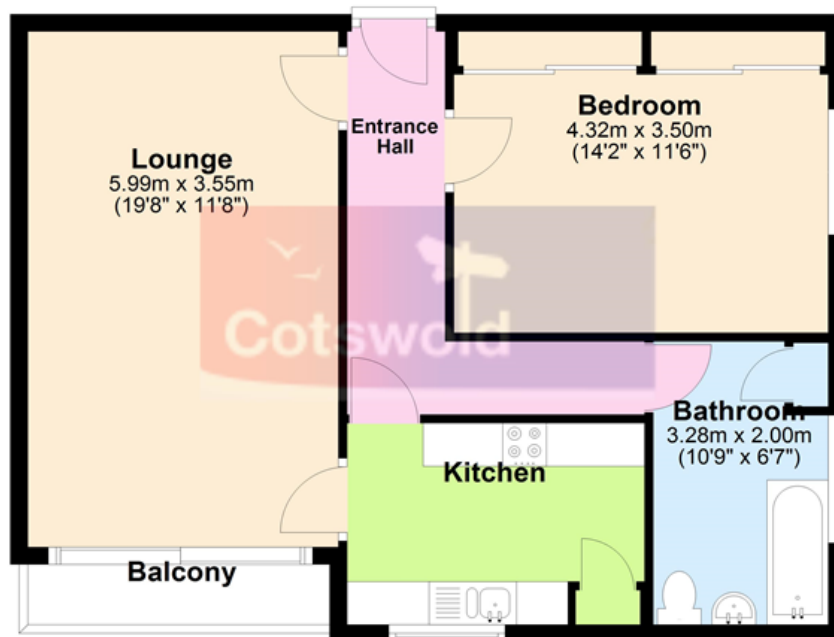






Ground Floor

Approx. 59.9 sq. metres (644.7 sq. feet)



Total area: approx. 59.9 sq. metres (644.7 sq. feet)

Energy Efficiency Rating		
	Current	Potential
Very energy efficient - lower running costs		
(92+) A		
(81-91) B		
(69-80) C		73
(55-68) D		
(39-54) E	54	
(21-38) F		
(1-20) G		
Not energy efficient - higher running costs		
England, Scotland & Wales		
	EU Directive 2002/91/EC	