



7 Paddock Way, Bexhill-on-Sea, East Sussex,
TN39 4GH

£405,000

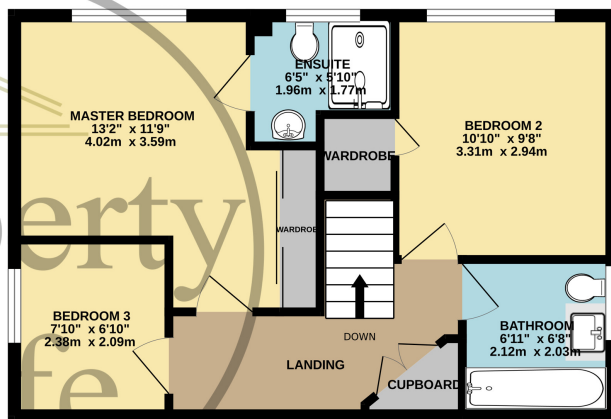
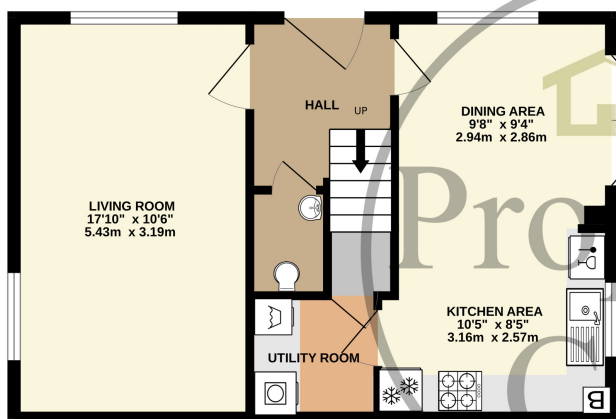


- Immaculate Detached Family Home
- Three Good Size Family Bedrooms
- Master Bedroom With En-Suite
- Spacious Dual Aspect Family Lounge
- Sought After & Peaceful Location
- Modern Fully Equipped Fitted Kitchen
- Open Plan Dining Area With Patio Doors
- Separate Utility Room & Storage
- Ample Storage Throughout This Home
- Modern Family Bathroom
- Ground Floor Cloakroom / W.C
- Tandem Parking (For 2 Cars)
- A Highly Efficient Family Home
- Remaining New Build Guarantees In Place
- Offered For Sale With NO CHAIN!
- Call Our Bexhill Sales Team (01424 224488)



GROUND FLOOR
471 sq.ft. (43.8 sq.m.) approx.

1ST FLOOR
471 sq.ft. (43.8 sq.m.) approx.



TOTAL FLOOR AREA : 943 sq.ft. (87.6 sq.m.) approx.

Whilst every attempt has been made to ensure the accuracy of the floorplan contained here, measurements of doors, windows, rooms and any other items are approximate and no responsibility is taken for any error, omission or mis-statement. This plan is for illustrative purposes only and should be used as such by any prospective purchaser. The services, systems and appliances shown have not been tested and no guarantee as to their operability or efficiency can be given.
Made with Metropix ©2025

