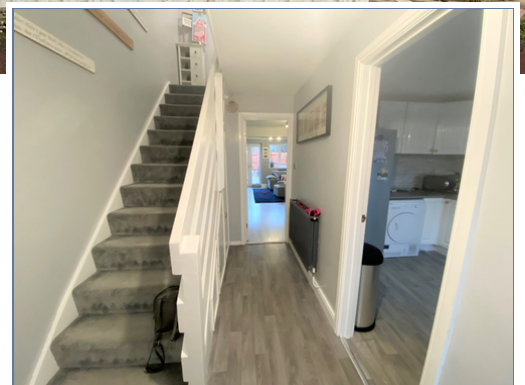




**33 Hainault Avenue, Giffard Park, Milton Keynes, Buckinghamshire, MK14 5PQ**

**£125,000 Leasehold**

- 3 Bedroom Terrace Property
- 40% MKBC Shared Ownership
- £20,000 Premium
- 87 Year Lease Remaining
- £184:00 Monthly Rent
- Extensively Decorated Throughout
- Replacement Boiler ( 3 years Old March 2021)
- Electrics Updated and New Consumer Unit Fitted
- Refitted Bathroom
- Replacement Flooring throughout the whole Home
- Allocated Parking for 2 Cars
- New replaced Roof to Extension August 2020
- Local shops within 5 minutes walk
- Rear Garden Redesigned and Landscaped
- EPC Rating C







40% MKBC Shared Ownership - Approximately 87 year lease remaining, £184 monthly rent.

This extended and heavily refurbished three bedroom home is located in the popular and mature location of Giffard Park. The accommodation comprises entrance hall, separate kitchen, open plan living area with French doors to a surprisingly large garden, three bedrooms and family bathroom. Outside there is allocated parking for two vehicles. Please call elevation to arrange your viewing today.

## GROUND FLOOR

### Entrance Hall

Doors leading to

### Lounge Diner

20' 10" x 12' 8" (6.35m x 3.87m)

### Kitchen

12' 5" x 8' 5" (3.79m x 2.56m)

## FIRST FLOOR

### Landing

Doors leading to

### Bedroom One

12' 6" x 8' 5" (3.82m x 2.57m)

### Bedroom Two

9' 10" x 7' 3" (2.99m x 2.20m)

### Bedroom Three

7' 7" x 6' 1" (2.30m x 1.85m)

### Family Bathroom

Fitted to comprise three piece suite

## EXTERIOR

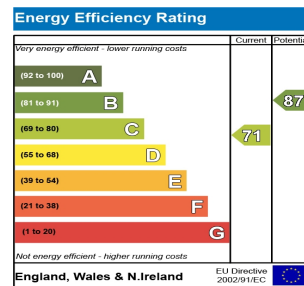
### Rear Garden

### Allocated Parking

Provided for two vehicles

## Disclaimer

Whilst we have endeavoured to prepare our sales particulars accurately none of the services, appliances or equipment have been tested. A buyer should satisfy themselves on such matters prior to purchase. Any measurements or distances mentioned in these particulars are for guide reference only. If such particulars are fundamental to a purchase, buyers should rely on their own enquiries. All enquiries should be directed to Elevation Estate Agents in the first instance.



Total area: approx. 74.2 sq. metres (788.6 sq. feet)  
 Floor Plans are for layout purposes only.  
 Plan produced using Planico.