





- Three Storey Town House
- Fully Equipped Kitchen
- Ground Floor Living Room
- Two 1st Floor Double bedrooms
- Four Piece Bathroom
- Master Bedroom & En-Suite
- Rear Garden
- Parking for Two Cars

Description

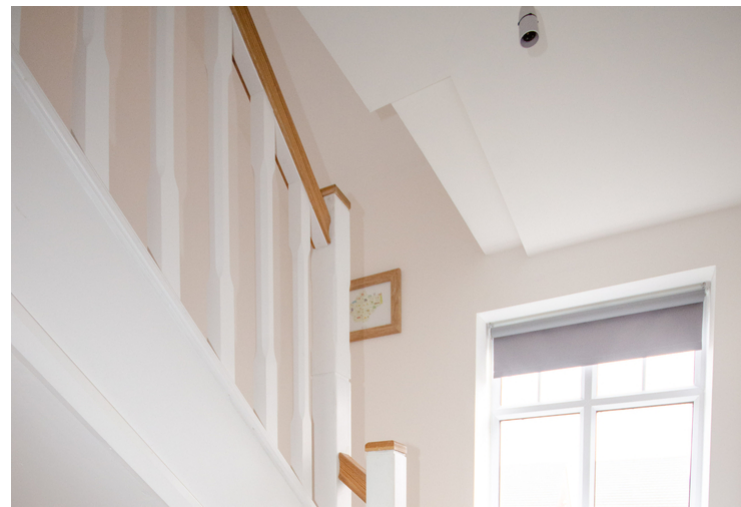
A well-presented three storey town-house with PVCu double glazing and gas central heating. Well proportioned accommodation comprising: Entrance hall, cloakroom/WC, fully equipped kitchen and living room on the ground floor along with two double bedrooms, bathroom and landing on the first floor and a master bedroom suite on the second floor with luxury en-suite shower room. Externally there is a good size rear garden and a driveway with parking for at least two cars. An internal viewing appointment is advised.



Location
Tenure

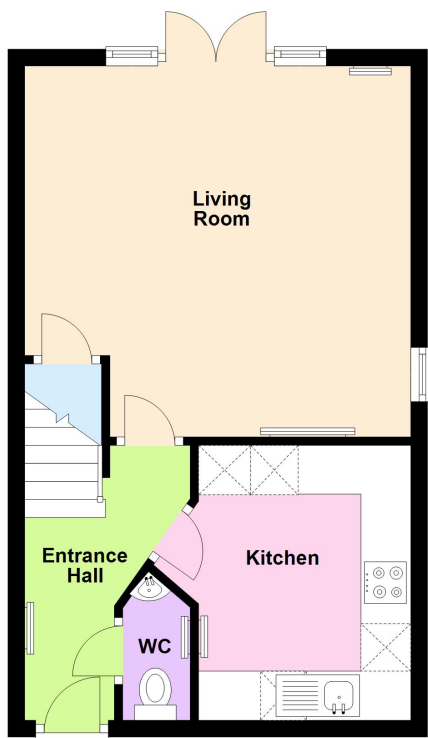
EPC Rating:

Important Notes
Type Here



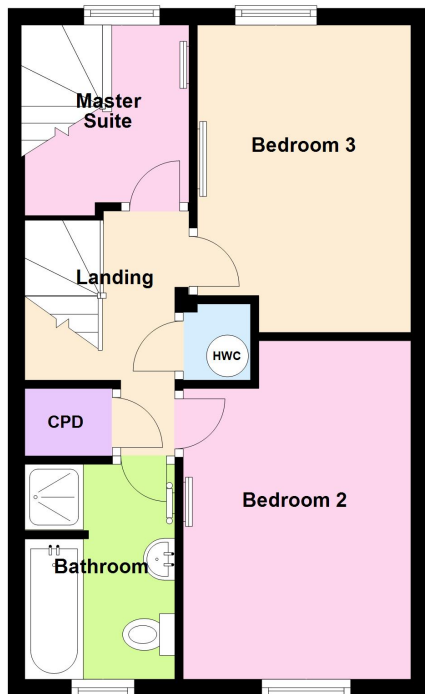
Ground Floor

Approx. 36.2 sq. metres (389.9 sq. feet)



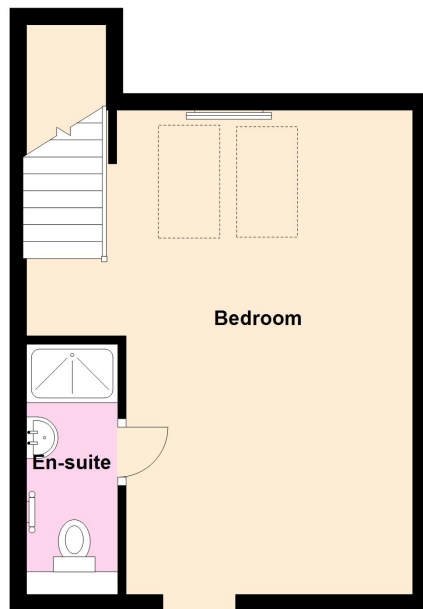
First Floor

Approx. 36.2 sq. metres (389.9 sq. feet)



Second Floor

Approx. 28.1 sq. metres (302.2 sq. feet)



Total area: approx. 100.5 sq. metres (1082.1 sq. feet)

