



Offers Over £139,500
6 Denholm Way, Crosshill, Lochgelly, Fife, KY5 8BW

6 Denholm Way, Crosshill, Lochgelly, Fife, KY5 8BW

Delmor are delighted to present to the market this detached bungalow set in a popular location. Crosshill has a great range of amenities including shopping and schooling. Lochore Meadows Country Park is within walking distance and there are close links to the A92 for the commuter. The property briefly consists of - Entrance vestibule through to the hallway. Spacious lounge. Kitchen with floor and wall mounted units incorporating gas hob with electric oven below and overhead extractor fan. Utility room with washing machine. Shower room with shower cubicle, WC and wash hand basin. Inner hall giving access to the bedrooms. Master bedroom has fitted mirrored wardrobes. En suite has shower cubicle, WC and wash hand basin. Two further bedrooms one of which has fitted wardrobes. There are extensive gardens which are mostly laid to lawn. There is a garage and two garden sheds. The property also benefits from gas central heating and double glazing. Early viewing is highly recommended to fully appreciate the space and layout on offer.

Ground Floor

Entrance Vestibule

Hallway



Lounge



Kitchen



Utility Room



Bedroom



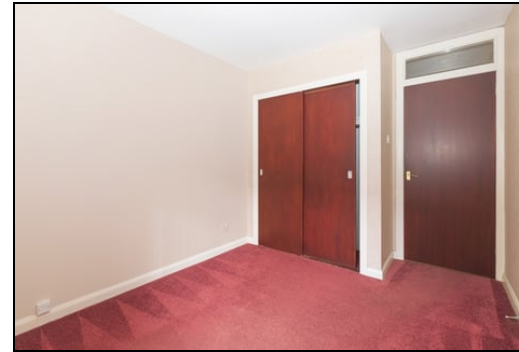
Shower Room



En Suite



Bedroom



Bedroom



Gardens



Extras

All floor coverings. Gas hob, electric oven and extractor fan. Washing machine. Garden shed.

SONIC TAPE

All measurements have been taken using a sonic tape measure and therefore, may be subject to a small margin of error.

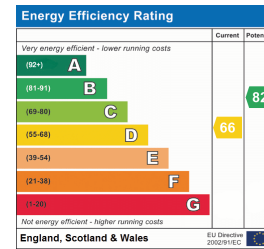


MORTGAGE & FINANCIAL ADVICE

Qualified Mortgage and Financial Consultants can provide you with up to the minute information on many of the rates available. To arrange an appointment telephone this office. **YOUR HOME IS AT RISK IF YOU DO NOT KEEP UP REPAYMENTS ON A MORTGAGE OR OTHER LOANS SECURED ON IT.** Full written quotation available on request. A suitable life policy may be required. Loans are subject to status. Minimum age 18.

FREE VALUATION

How much is your property worth?. We can provide you with the answer. We offer a free valuation service without cost or obligation. Please call this office for an appointment.



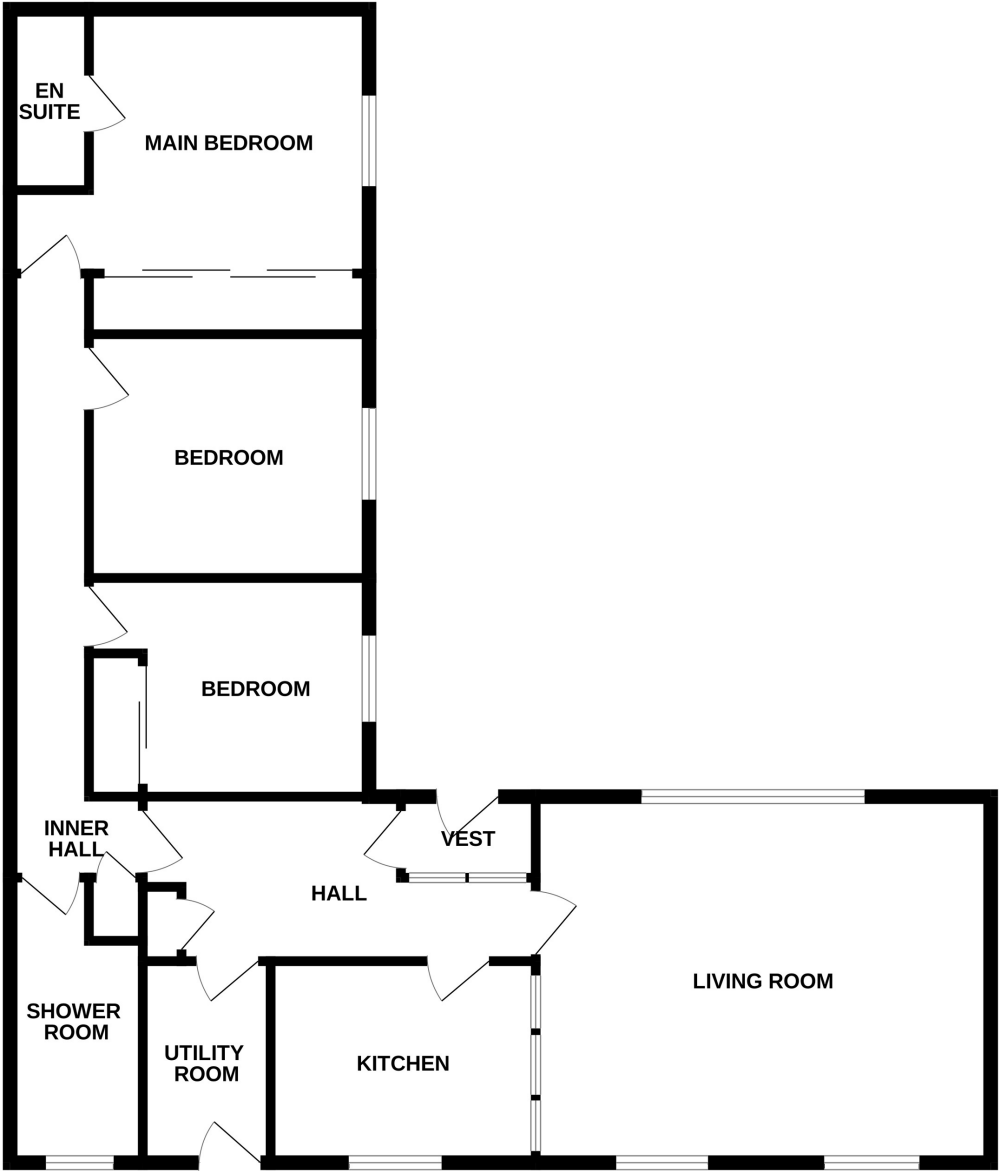
MEASUREMENTS

All measurements are approximate.

APPLIANCES/SERVICES

The mention of any appliances and/or services within these Sales Particulars does not imply they are in fully working order.

GROUND FLOOR



Whilst every attempt has been made to ensure the accuracy of the floorplan contained here, measurements of doors, windows, rooms and any other items are approximate and no responsibility is taken for any error, omission or mis-statement. This plan is for illustrative purposes only and should be used as such by any prospective purchaser. The services, systems and appliances shown have not been tested and no guarantee as to their operability or efficiency can be given.
Made with Metropix ©2025