

10 Lennard Road, Bromley, Kent, BR2 8LN

Property Images



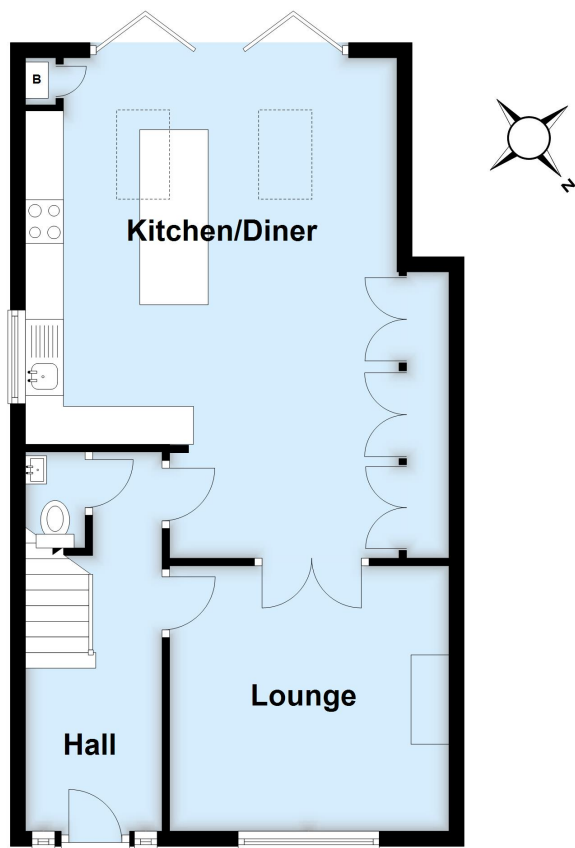






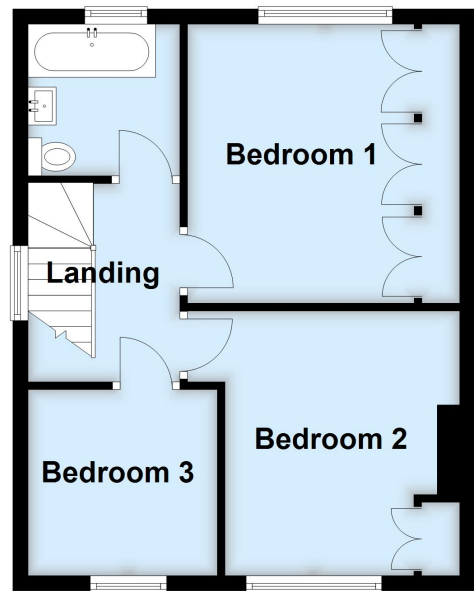
Ground Floor

Approx. 54.9 sq. metres (591.1 sq. feet)



First Floor

Approx. 41.3 sq. metres (444.9 sq. feet)



Total area: approx. 96.2 sq. metres (1036.0 sq. feet)

This plan is for general layout guidance and may not be to scale.
Plan produced using PlanUp.