

41 Crest View Drive, Petts Wood, Orpington, Kent, BR5 1BZ

Property Images

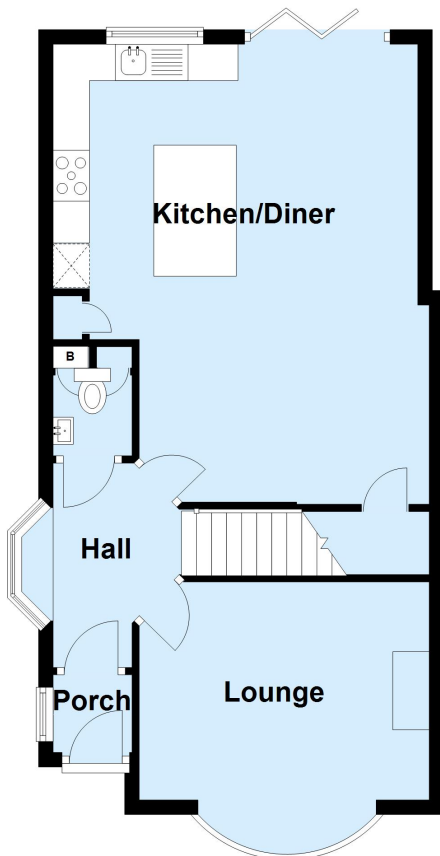






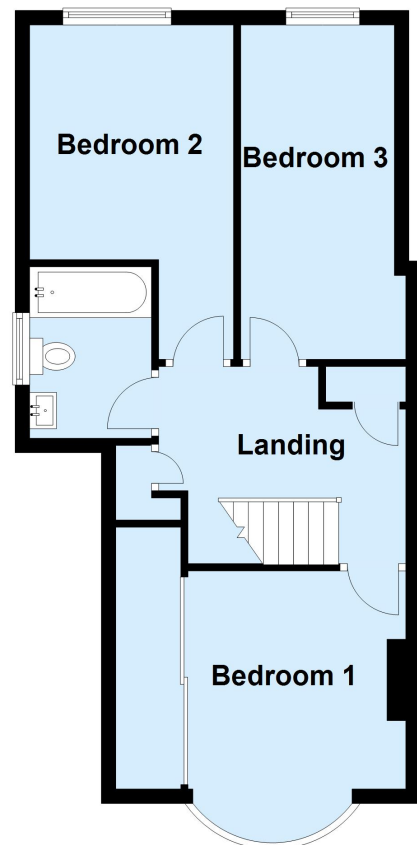
Ground Floor

Approx. 53.0 sq. metres (570.3 sq. feet)



First Floor

Approx. 48.5 sq. metres (521.6 sq. feet)



Total area: approx. 101.4 sq. metres (1091.8 sq. feet)

This plan is for general layout guidance and may not be to scale.
Plan produced using PlanUp.