



Solicitors & Estate Agents

36

Curling Knowe, Crossgates, COWDENBEATH, KY4 8AX



Working harder for you



4 bedrooms



3 public



2 bathrooms



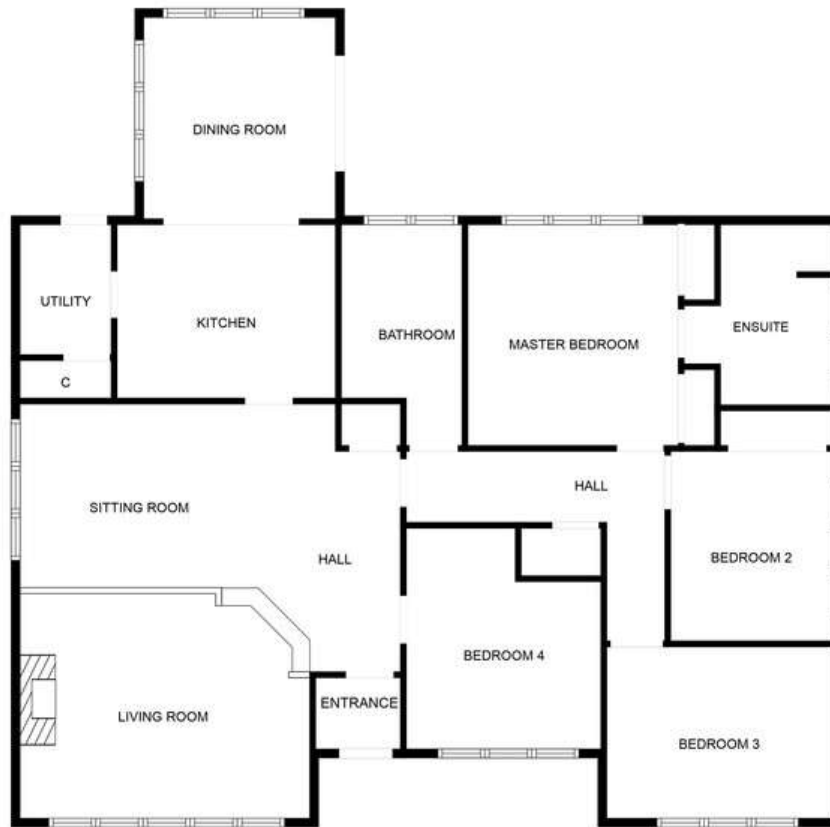
- + Impressive, four bedroom, detached bungalow, offered to the market in move in condition and offering fantastic outlooks over 'The Taff'
- + Crossgates is a popular village, located circa four miles from Dunfermline City Centre and offers basic amenities including convenience stores, takeaway restaurants and primary schooling
- + Additional amenities in nearby Cowdenbeath and Dunfermline including various supermarkets, bars, restaurants and secondary schooling
- + Excellent for transport links with the M90 motorway and Halbeath Park and Ride, with a regular service to and from Edinburgh City Centre and the airport
- + Quiet residential setting of similar properties within walking distance of 'The Taff', Crossgates Community Woodland
- + Driveway with parking for several cars and detached garage
- + Entrance vestibule leading to an open plan lounge and dining room with feature wood burning stove
- + Modern kitchen with a good selection of storage options, range cooker and separate utility room. The property has been extended to the rear providing a formal dining space with fantastic outlooks
- + Master bedroom benefitting from built in mirrored wardrobes and contemporary en suite shower room
- + Three additional bedrooms and contemporary family bathroom with three piece suite
- + Fantastic gardens to the rear, a mixture of easy maintenance patio sections to enjoy during the summer months with well-maintained shrub and grass areas
- + Perfect for those seeking accommodation over one level











MEASUREMENTS ARE CALCULATED BY CUBICASA TECHNOLOGY. DEEMED HIGHLY RELIABLE BUT NOT GUARANTEED.

Living Room	4.78 m x 4.06 m / 15'8" x 13'4"	Master Bedroom	3.78 m x 3.57 m / 12'5" x 11'9"
Sittingroom	4.63 m x 2.97 m / 15'2" x 9'9"	Bedroom 2	3.24 m x 2.79 m / 10'8" x 9'2"
Dining Room	3.44 m x 3.27 m / 11'3" x 10'9"	Bedroom 3	3.87 m x 2.97 m / 12'8" x 9'9"
Kitchen	3.67 m x 2.98 m / 12'0" x 9'9"	Bedroom 4	3.82 m x 3.37 m / 12'6" x 11'1"
Utility	2.28 m x 1.59 m / 7'6" x 5'3"		



Sharing is caring!

6/8 Bonnar Street,
Dunfermline KY12 7JR

T: 01383 629720 F: 01383 621333, DX DF69

espc

W: maloco.co.uk