

# Brookfields

Castle Cary, BA7 7BS

COOPER  
AND  
TANNER



## £375,000 Freehold

An extended four bedroom end-of-terrace house within local proximity to the town centre with garage and driveway parking

# Brookfields Castle Cary BA7 7BS

 4  1  1 EPC D

## £375,000 Freehold

### DESCRIPTION

Located within a well positioned residential area of Brookfields in Castle Cary is this appealing four-bedroom end-of-terrace home is perfectly suited for modern family living. Boasting an ideal location just a short stroll from the vibrant town centre, the property enjoys easy access to local amenities, transport links and the community atmosphere that Castle Cary is so well known for.

Thoughtfully extended to enhance the internal footprint, this attractive home delivers generous living accommodation throughout, with well-proportioned rooms and a layout that flows nicely from one space to the next. The extension has transformed the property into a more spacious residence, ideal for growing families.

Upon entering, you are welcomed by a light and airy hallway. The heart of the property is the modern kitchen, which has been finished to a good standard with quality units and fittings with ample storage. It's a fantastic space for both everyday use and entertaining, opening into the main living areas that enjoy a warm, homely feel.

Upstairs, the home continues to impress with four generously sized bedrooms, each offering comfortable and adaptable living. Whether used as bedrooms, guest accommodation, or home offices, the options are plentiful. The family bathroom is well-appointed with

shower, W/C and basin.

Externally, the property benefits from both front and rear gardens. The front garden and rear garden provides an ideal space for children to play, gardening enthusiasts to enjoy during the warmer months. A single garage and private driveway offer convenient off-road parking and additional storage.

With its extended space, great location and family-friendly design, the property offers a unique opportunity to acquire a substantial home in a popular neighbourhood. Whether you're upsizing or simply seeking a more versatile space for the future, this home is not to be missed.

### LOCATION

Castle Cary is a charming market town in Somerset, nestled in the South Somerset countryside. Known for its historic architecture, independent shops, and relaxing atmosphere, Castle Cary is a sought after destination that offers a warm welcome to visitors. With its rich history and beautiful surrounding landscapes, Castle Cary is a nice spot to call home.







## Brookfields, Castle Cary, BA7

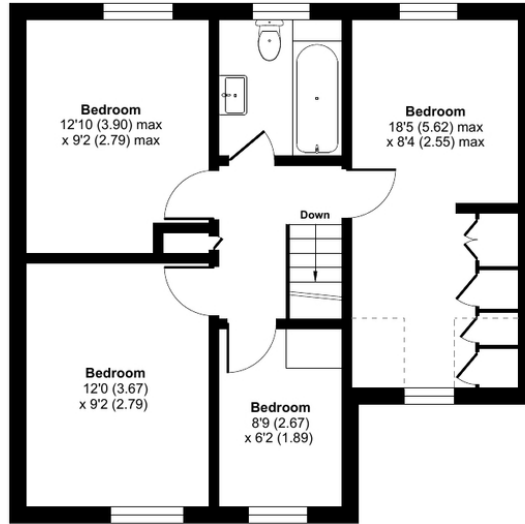
Approximate Area = 1123 sq ft / 104.3 sq m

Limited Use Area = 20 sq ft / 1.8 sq m

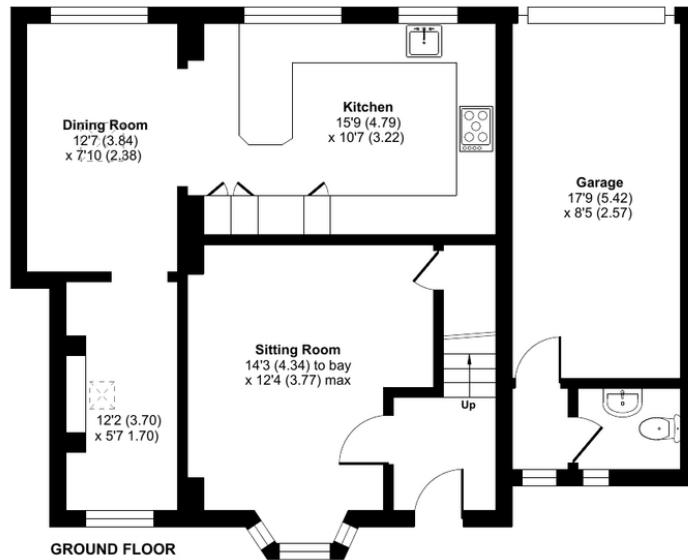
Garage = 150 sq ft / 13.9 sq m

Total = 1293 sq ft / 120 sq m

For identification only - Not to scale



FIRST FLOOR



GROUND FLOOR



Floor plan produced in accordance with RICS Property Measurement 2nd Edition, Incorporating International Property Measurement Standards (IPMS2 Residential). © nrichcom 2025. Produced for Cooper and Tanner. REF: 1282367

### CASTLE CARY OFFICE

Telephone 01963 350327

Fore Street, Castle Cary, Somerset BA7 7BG

[castlecary@cooperandtanner.co.uk](mailto:castlecary@cooperandtanner.co.uk)

**COOPER  
AND  
TANNER**

Important Notice: These particulars are set out as a general outline only for the guidance of intended purchasers and do not constitute, nor constitute part of, an offer or contract. All descriptions, dimensions, reference to condition and necessary permissions for use and occupation, warranties and other details are given without responsibility and any intending purchasers should not rely on the measurements or representations of fact but must satisfy themselves by inspection or otherwise as to the correctness of each of them.

